

If you wanna love somebody

Transcribed by:
Tom Odell Sheet Music

Tom Odell

♩ = 104

The first system of the sheet music, measures 1-10. It is in 4/4 time with a tempo of 104. The key signature has five flats (B-flat, E-flat, A-flat, D-flat, G-flat). The melody in the right hand starts with a half note G4, followed by a half note F4, then a quarter note E4, and continues with various chords and single notes. The bass line in the left hand consists of a steady eighth-note accompaniment.

11

The second system of the sheet music, measures 11-15. The melody continues with a half note G4, followed by a half note F4, then a quarter note E4, and continues with various chords and single notes. The bass line continues with a steady eighth-note accompaniment.

16

The third system of the sheet music, measures 16-20. The melody continues with a half note G4, followed by a half note F4, then a quarter note E4, and continues with various chords and single notes. The bass line continues with a steady eighth-note accompaniment.

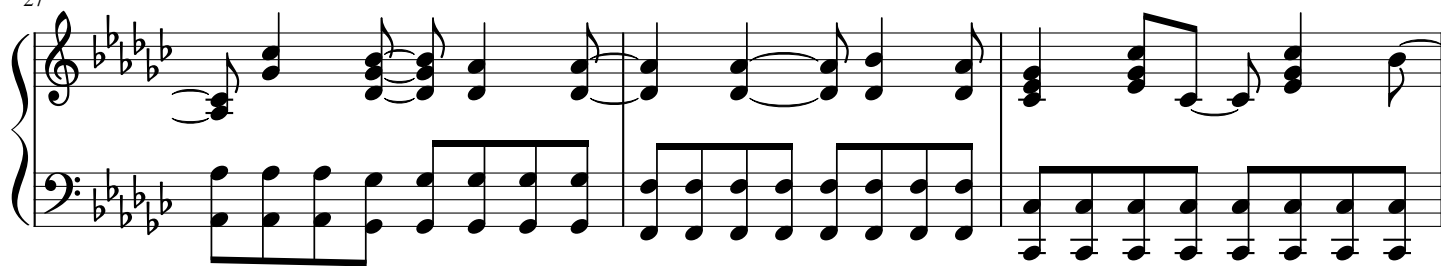
20

The fourth system of the sheet music, measures 21-23. The melody continues with a half note G4, followed by a half note F4, then a quarter note E4, and continues with various chords and single notes. The bass line continues with a steady eighth-note accompaniment.

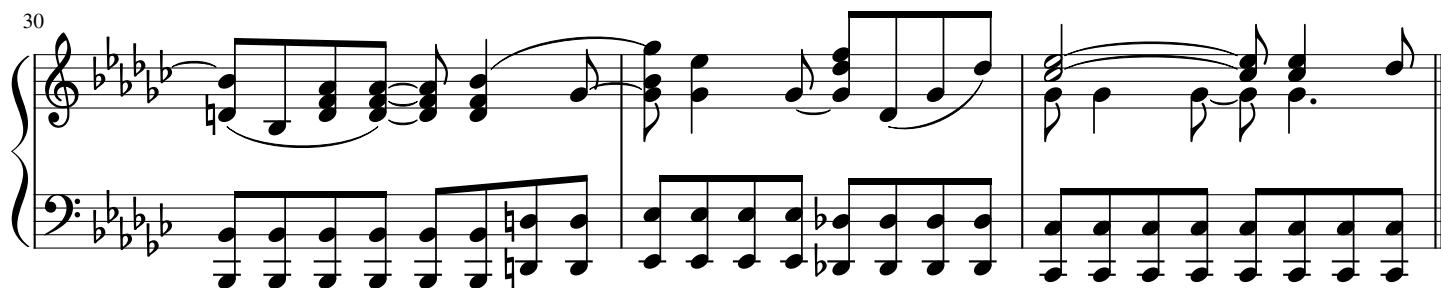
24

The fifth system of the sheet music, measures 24-27. The melody continues with a half note G4, followed by a half note F4, then a quarter note E4, and continues with various chords and single notes. The bass line continues with a steady eighth-note accompaniment.

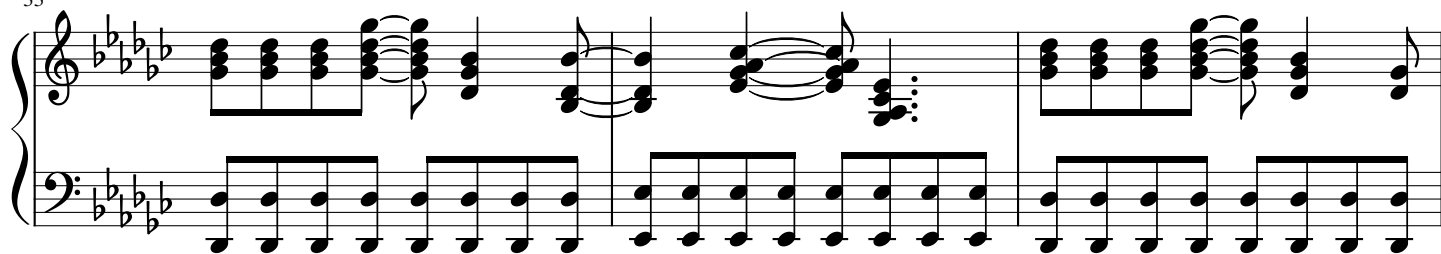
27



30



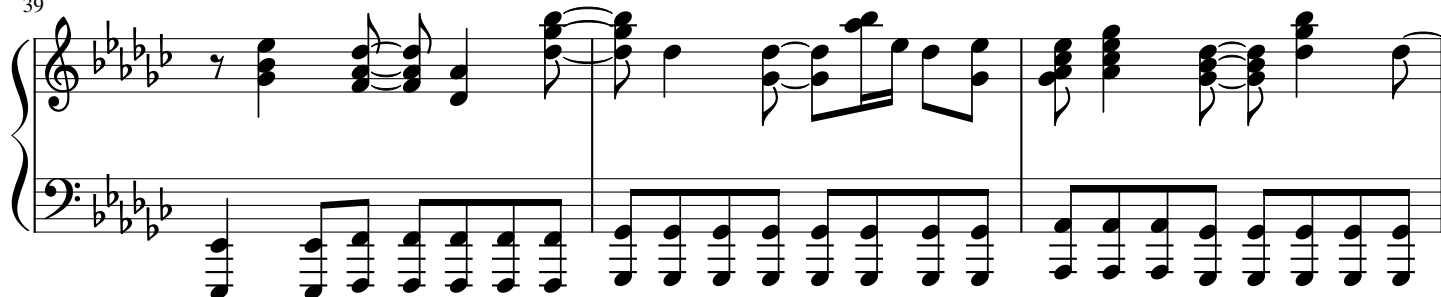
33



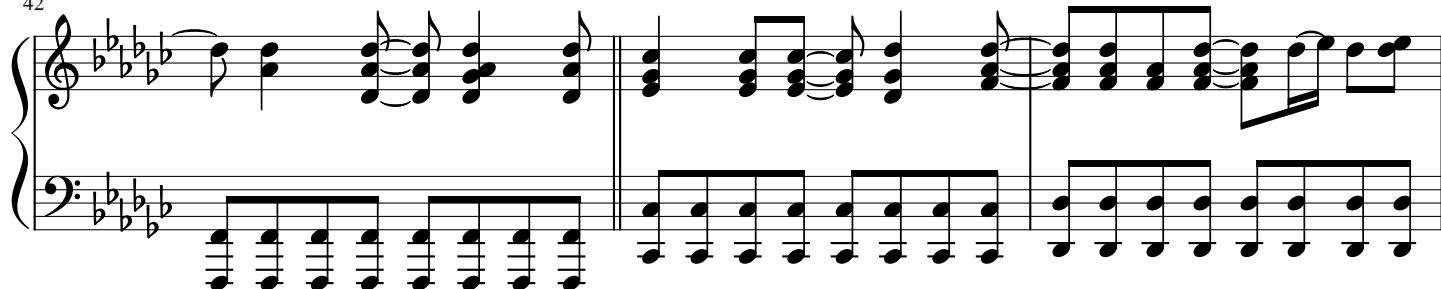
36



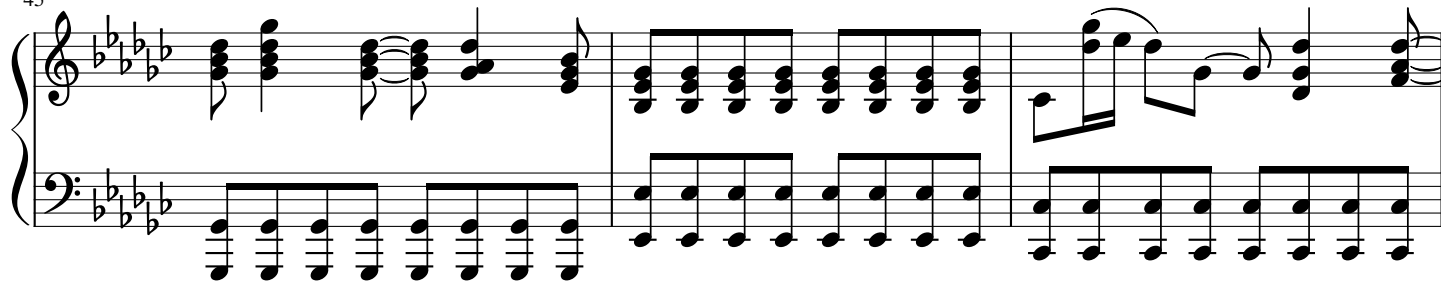
39



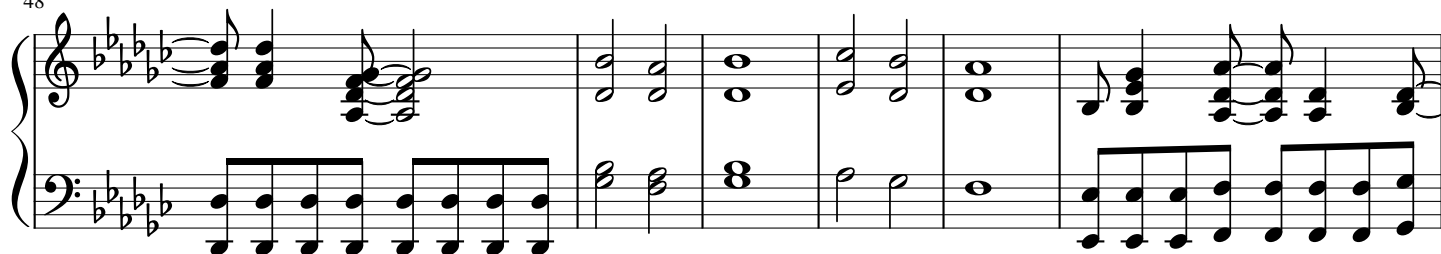
42



45



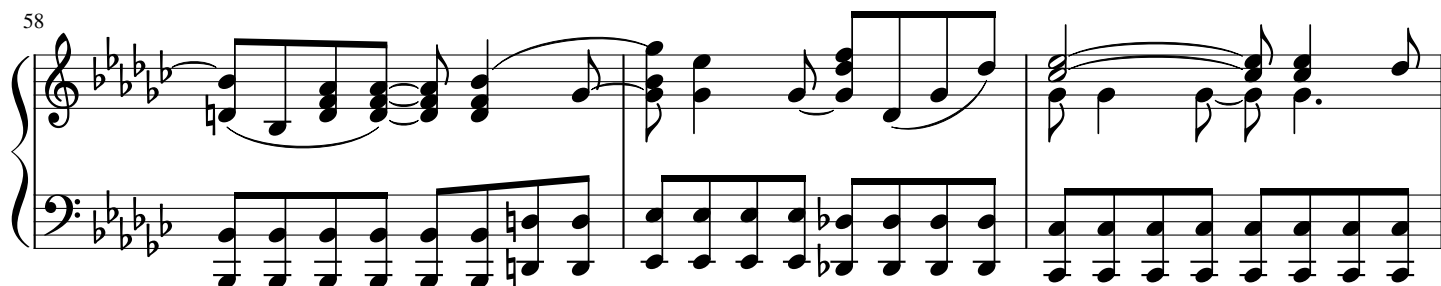
48



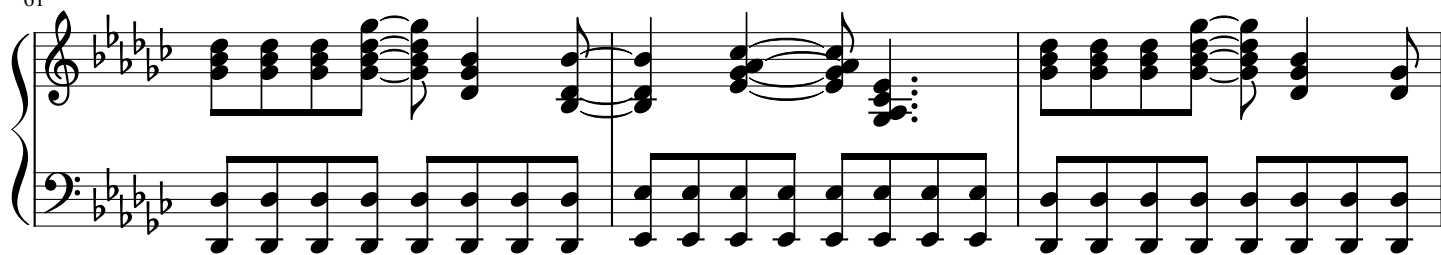
54



58



61



64



67

System 1 (measures 67-69): The right hand begins with a whole rest in measure 67, followed by chords in measures 68 and 69. The left hand plays a steady eighth-note accompaniment throughout.

70

System 2 (measures 70-72): The right hand features a melodic line with eighth notes and chords. The left hand continues with the eighth-note accompaniment.

73

System 3 (measures 73-75): The right hand has chords in measures 73 and 74, followed by a melodic phrase in measure 75. The left hand maintains the eighth-note accompaniment.

76

System 4 (measures 76-78): The right hand plays a continuous eighth-note chordal texture in measures 76 and 77, then moves to chords in measure 78. The left hand continues the eighth-note accompaniment.

79

System 5 (measures 79-81): The right hand features a series of chords and some melodic movement. The left hand continues with the eighth-note accompaniment.

82

System 6 (measures 82-84): The right hand has a melodic line in measure 82, followed by chords in measures 83 and 84. The left hand continues the eighth-note accompaniment.

85

Measures 85-87 of a musical score in E-flat major (three flats). The treble clef staff features chords and a melodic line with a long slur over measures 86 and 87. The bass clef staff contains a steady eighth-note accompaniment.

88

Measures 88-90 of the musical score. The treble clef staff continues with chords and a melodic line, including a slur over measures 89 and 90. The bass clef staff maintains the eighth-note accompaniment.

91

Measures 91-93 of the musical score, concluding with a double bar line. The treble clef staff shows chords and a melodic line. The bass clef staff continues with the eighth-note accompaniment.