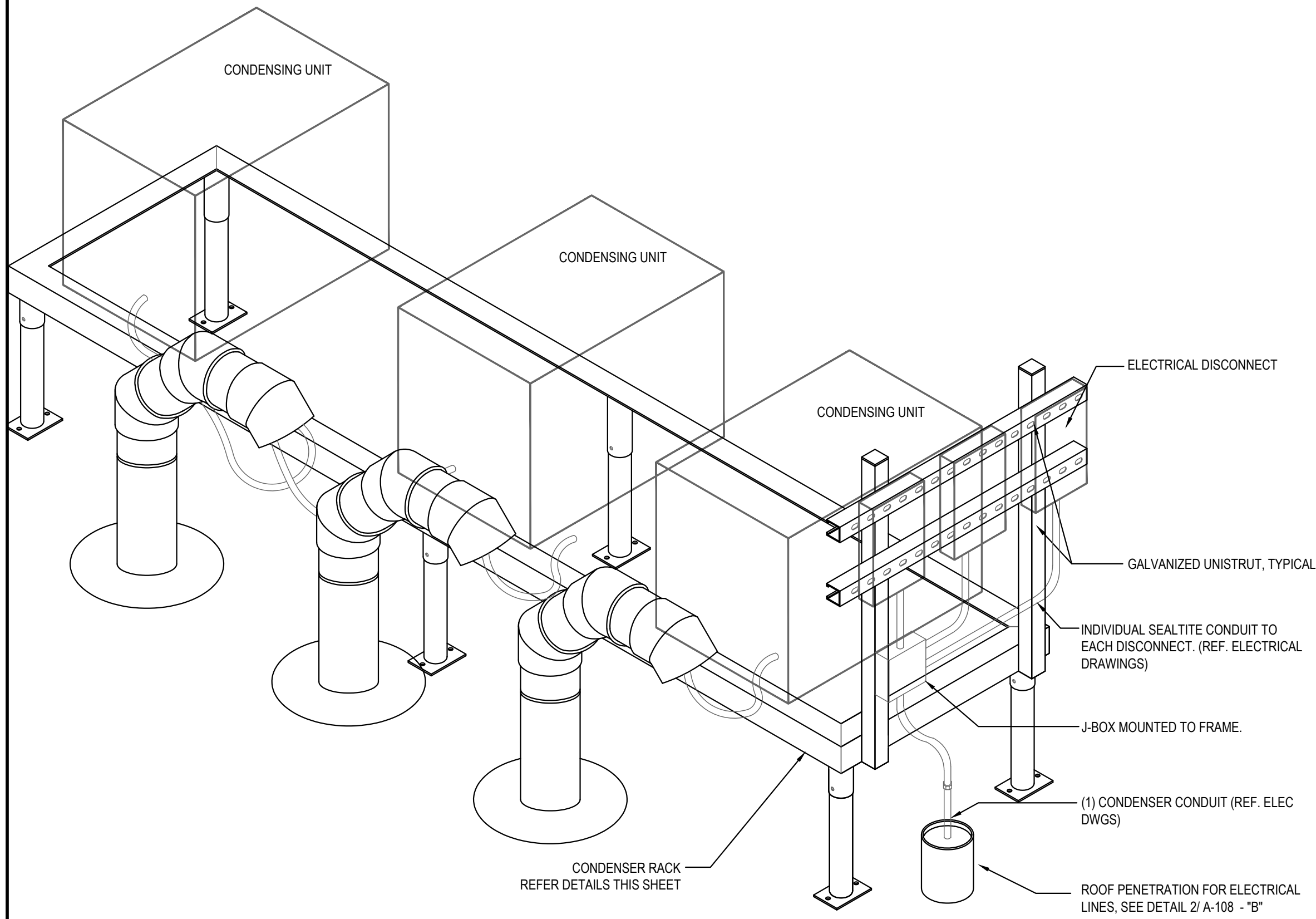
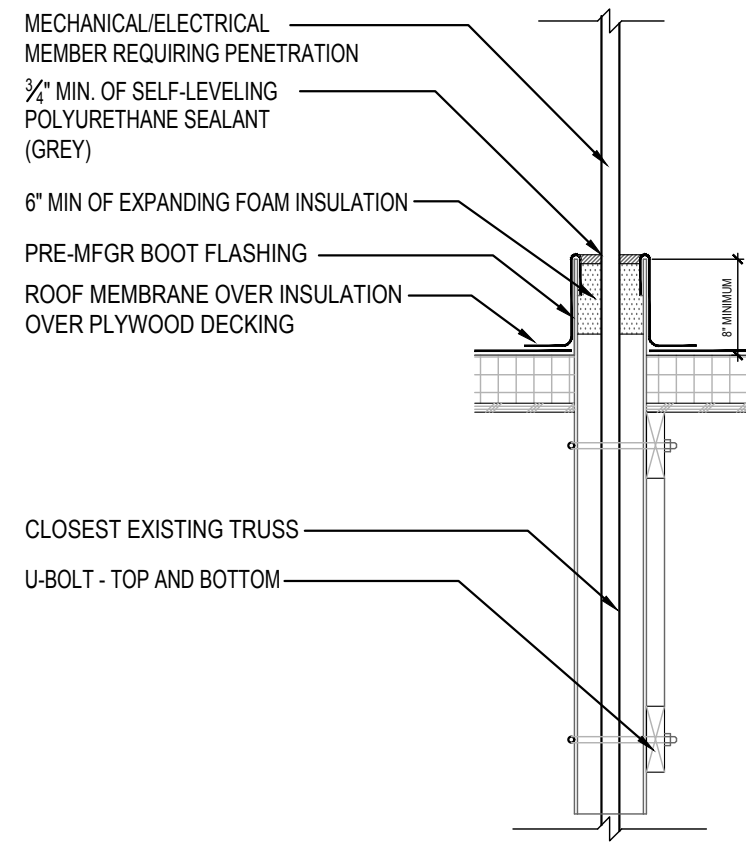


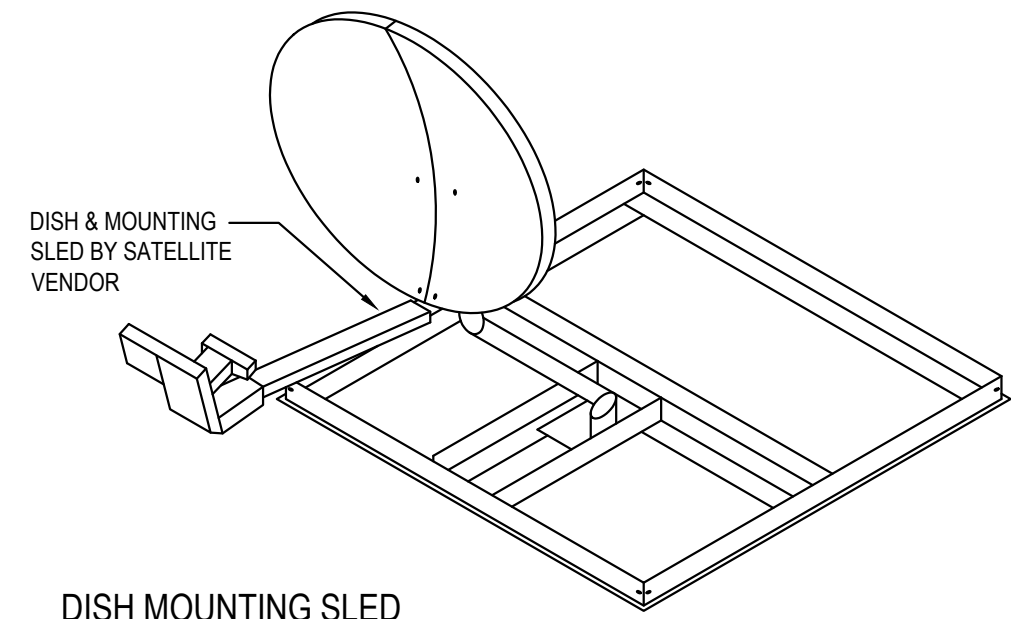
ROOF EXHAUST FAN 5
Scale= 1/4" = 1'-0" A-108



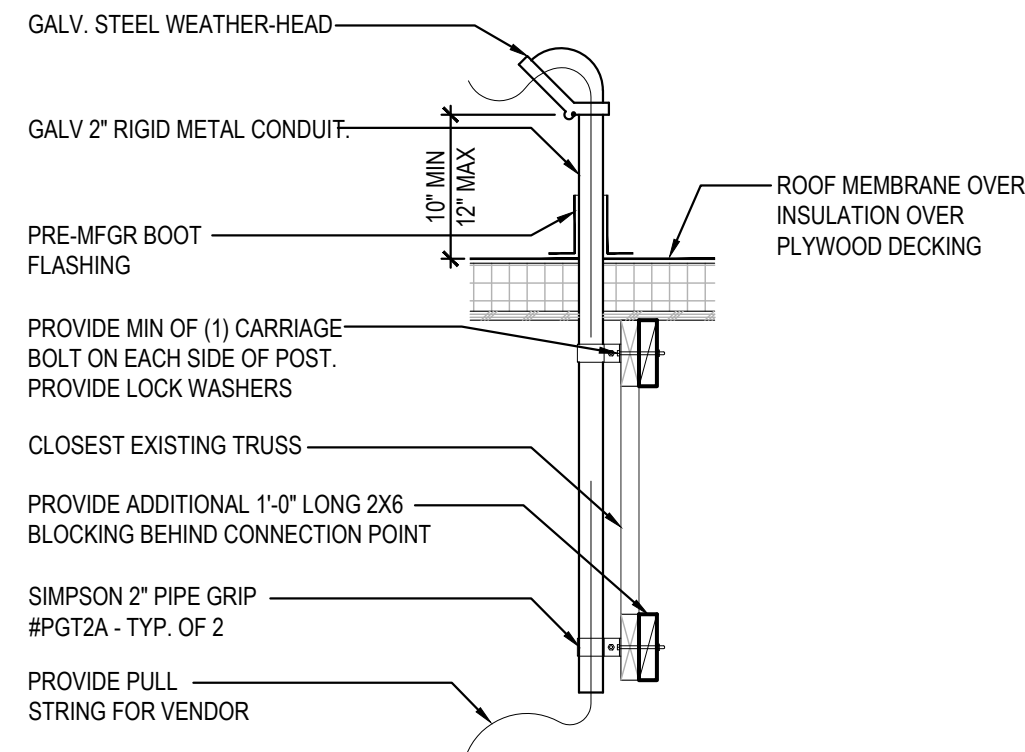
CONDENSER RACK ISOMETRIC 3
Scale= 3/4" = 1'-0" A-108



CONDITION "B" - AT CONDENSER ELECTRICAL LINES

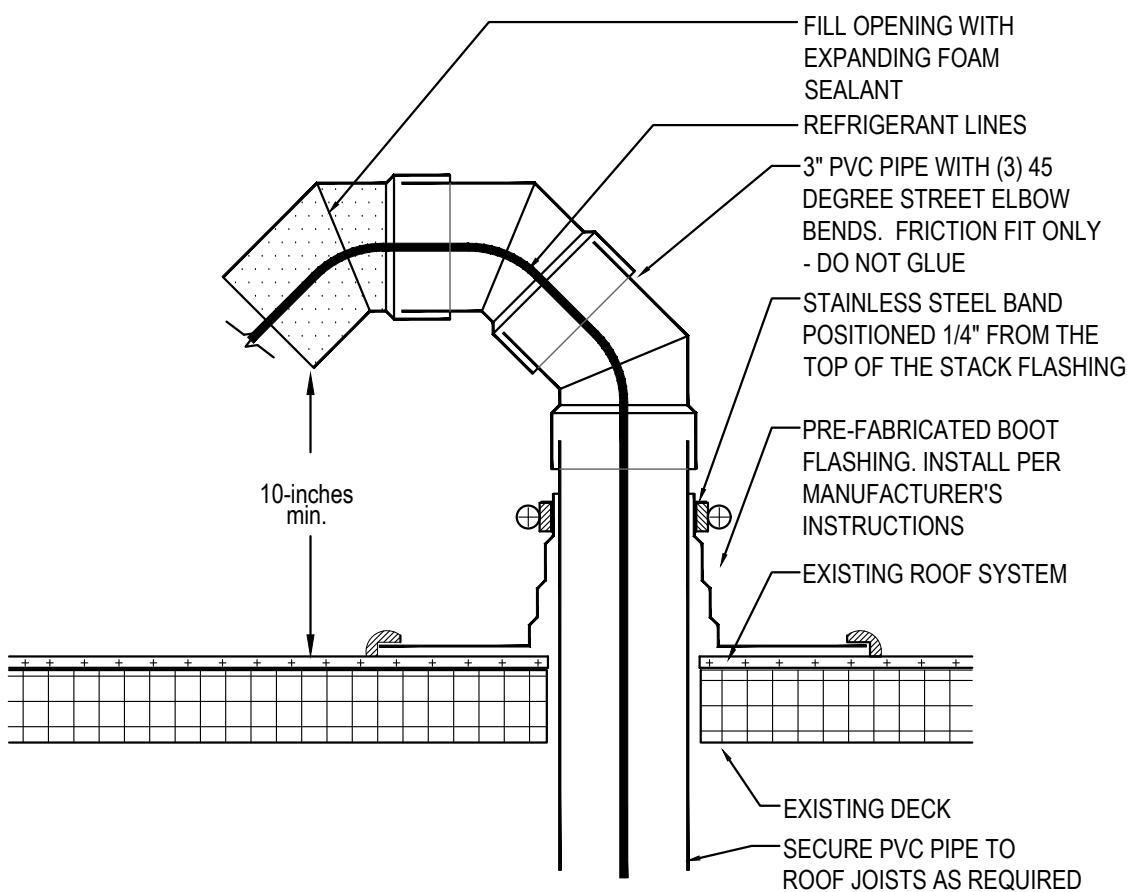


DISH MOUNTING SLED

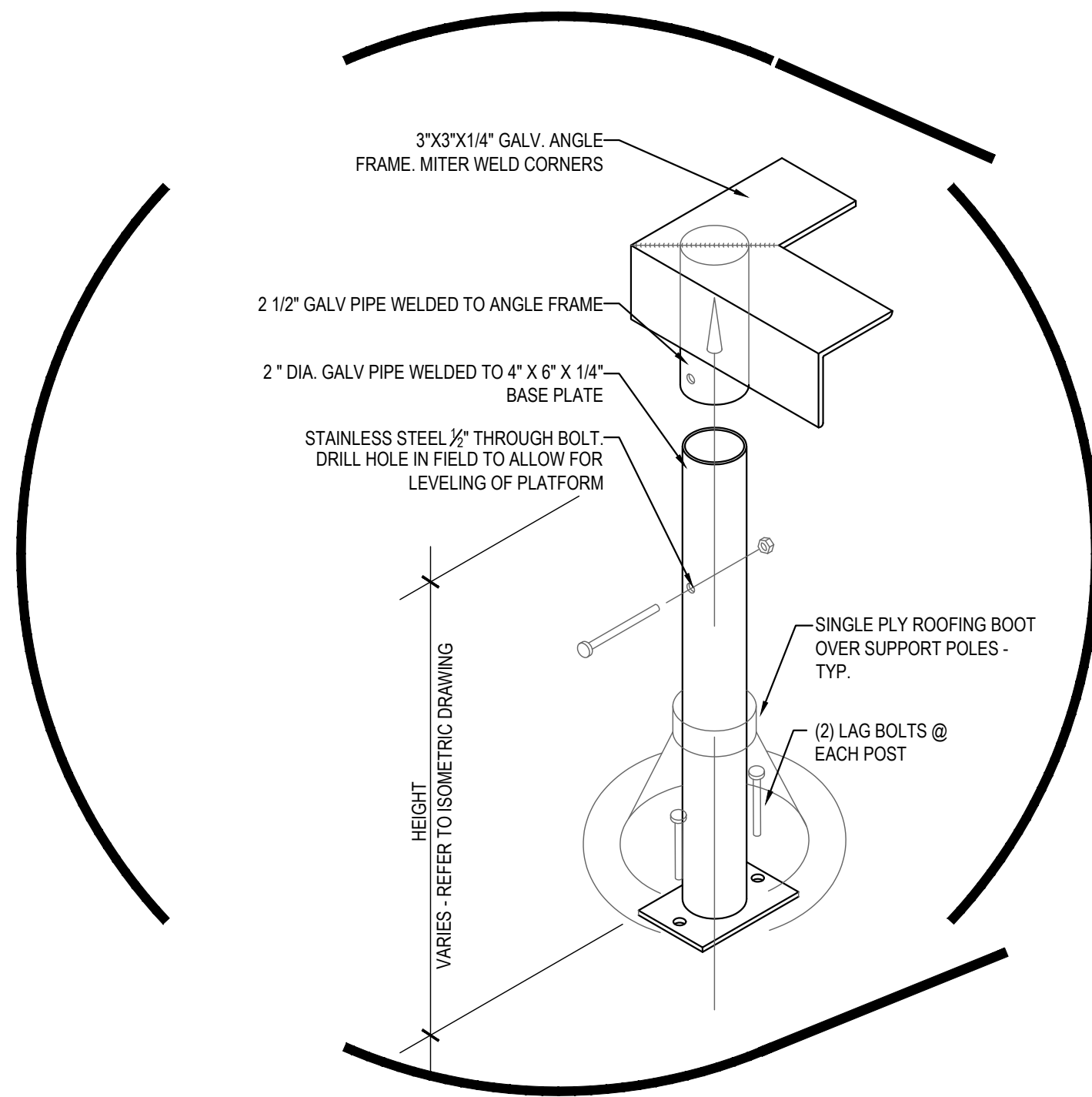


CONDITION "A" - ABOVE MANAGERS STATION

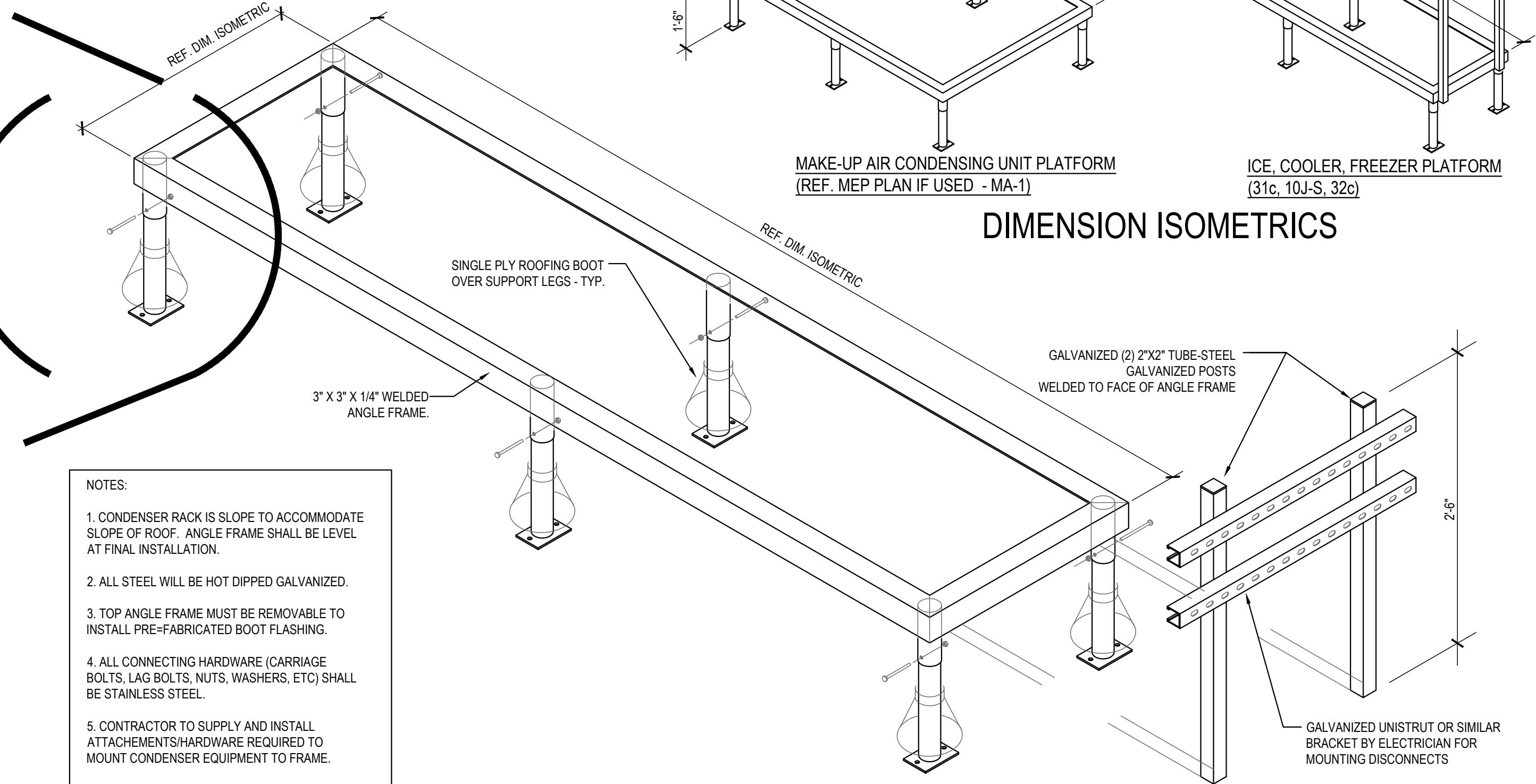
ROOF PENETRATION DETAIL AT REF. / ELEC. LINES AND SATELLITE DISH 2
Scale= 3/4" = 1'-0" A-108



PVC ROOF PENETRATION 4
Scale= 1/2" = 1'-0" A-108



- NOTES:
- CONDENSER RACK IS SLOPE TO ACCOMMODATE SLOPE OF ROOF. ANGLE FRAME SHALL BE LEVEL AT FINAL INSTALLATION.
 - ALL STEEL WILL BE HOT DIPPED GALVANIZED.
 - TOP ANGLE FRAME MUST BE REMOVABLE TO INSTALL PRE-FABRICATED BOOT FLASHING.
 - ALL CONNECTING HARDWARE (CARRIAGE BOLTS, LAG BOLTS, NUTS, WASHERS, ETC) SHALL BE STAINLESS STEEL.
 - CONTRACTOR TO SUPPLY AND INSTALL ATTACHMENTS/HARDWARE REQUIRED TO MOUNT CONDENSER EQUIPMENT TO FRAME.
 - UNISTRUT SHALL BE GALVANIZED



FREEZER / COOLER / ICE MAKER CONDENSER RACK DETAILS 1
Scale= 3/4" = 1'-0" A-108



PANDA EXPRESS, INC.
1683 Walnut Grove Ave.
Rosemead, California
91770
Telephone: 626.799.9898
Facsimile: 626.372.8288

All ideas, designs, arrangement and plans indicated or represented by this drawing are the property of Panda Express Inc. and were created for use on this specific project. None of these ideas, designs, arrangements or plans may be used by or disclosed to any person, firm, or corporation without the written permission of Panda Express Inc.

REVISIONS:

ISSUE DATE:
1st PERMIT 12-22-17
2nd BID 02-02-18

DRAWN BY: VTL

PANDA PROJECT #: S8-19-5806
ARCH PROJECT #: 17044.032

hckloverarchitect
10955 LOWELL AVENUE, SUITE 700
OVERLAND PARK, KS 66210
ph: 913.649.8181 • fx: 913.649.1275

PANDA EXPRESS
OLD LEE HWY & LITTLE DEBBIE PKWY
8967 OLD LEE HIGHWAY
COLLEGE DALE, TN 37363

A-108

CONDENSER RACK
DETAIL

TRUE WARM & WELCOME 2200

BID SET 02.02.18