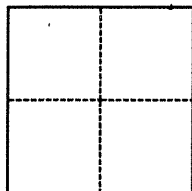


CORNER RECORD

Agency Index BK 104 PG 14
Document Number CR 10704

City of OAKLAND County of Alameda, California
Brief Legal Description Lot 80, "Unit C" - Oak Knoll 10/79-80

CORNER TYPE



☐ Government Corner ☐ Control
☐ Meander ☒ Property
☐ Rancho ☐ Other

Date of Survey Sept. 4, 2017

COORDINATES (Optional)

N. _____ E. _____
Elevation _____
Units ☐ Metric ☐ U.S. Survey Foot
Horizontal Datum _____
Zone _____ Epoch Date _____
Vertical Datum _____
☐ Complies with Public Resources Code §§8801-8819
☐ Complies with Public Resources Code §§8890-8902

PLS Act Ref.: ☒ 8765(d) ☐ 8771 ☐ 8773 ☐ Other:
Corner/Monument: ☐ Left as found ☒ Established ☐ Rebuilt ☐ Pre-Construction
☐ Found and tagged ☐ Reestablished ☐ Referenced ☐ Post-Construction

Narrative of corner identified and monument as found, set, reset, replaced, or removed:

☒ See sheet #2 for description(s):

SURVEYOR'S STATEMENT

This Corner Record was prepared by me or under my direction in conformance with

the Professional Land Surveyors' Act on Sept. 11, 2017

Signed [Signature] P.L.S. ~~4392~~ No. 4392



COUNTY SURVEYOR'S STATEMENT

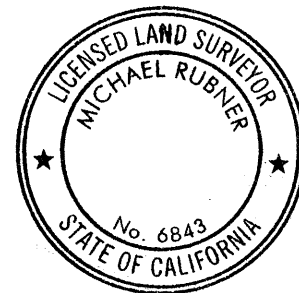
This Corner Record was received 17 OCTOBER 2017

and examined and filed 17 JANUARY 2018

Signed Michael Rubner P.L.S. or R.C.E. No. 6843

Title COUNTY SURVEYOR

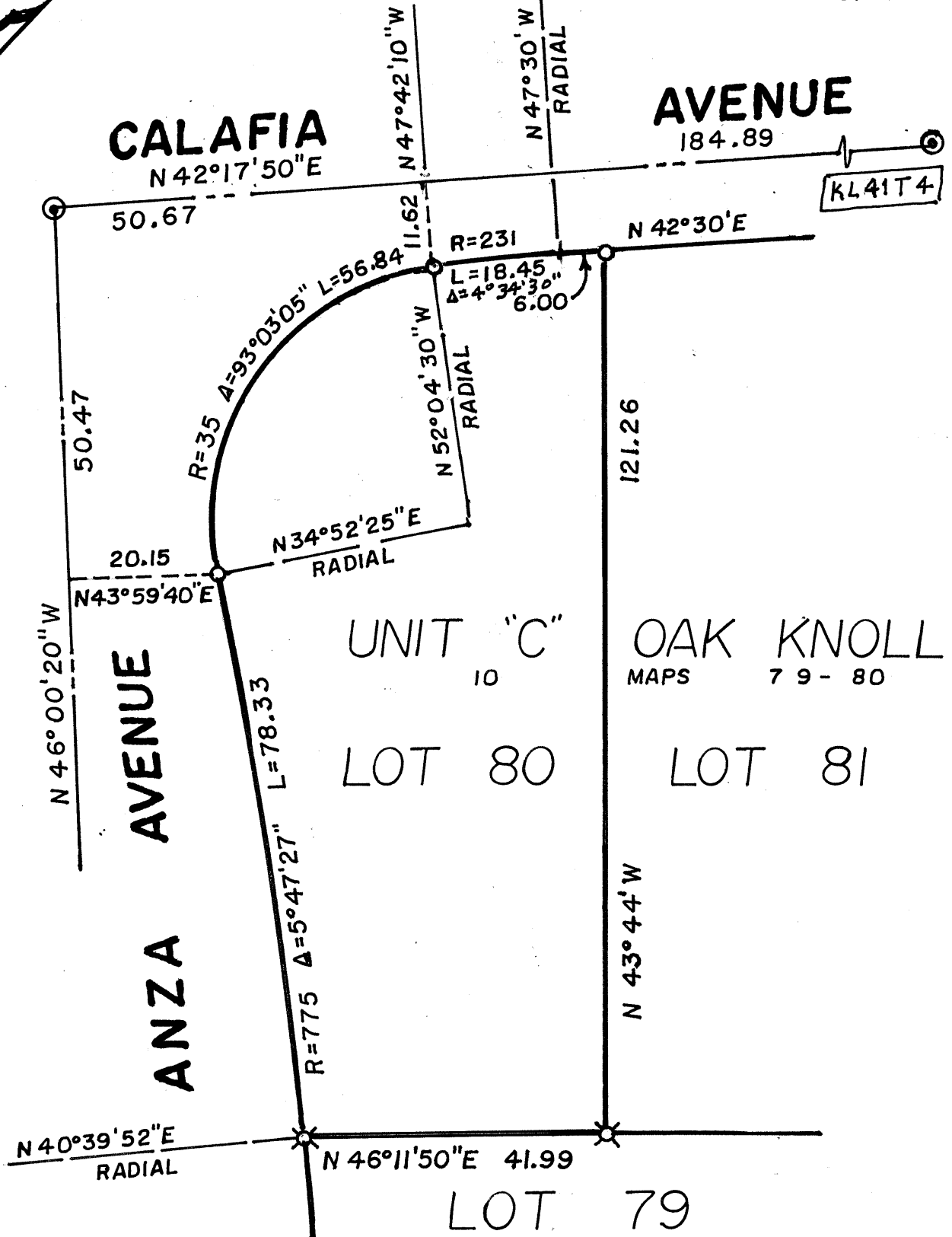
County Surveyor's Comment



SCALE 1"=20'

LEGEND

- ⊙ FOUND STD. CITY OF OAKLAND CONC. MON.
- SET 1/2" REBAR WITH CAP-"L.S.4392"
- ⊗ SET NAIL & BRASS TAG-"L.S.4392" ON CONC.



43A-4678-9