

Landscape

MIDDLE EAST | SEPTEMBER 2014





GREEN & MORE

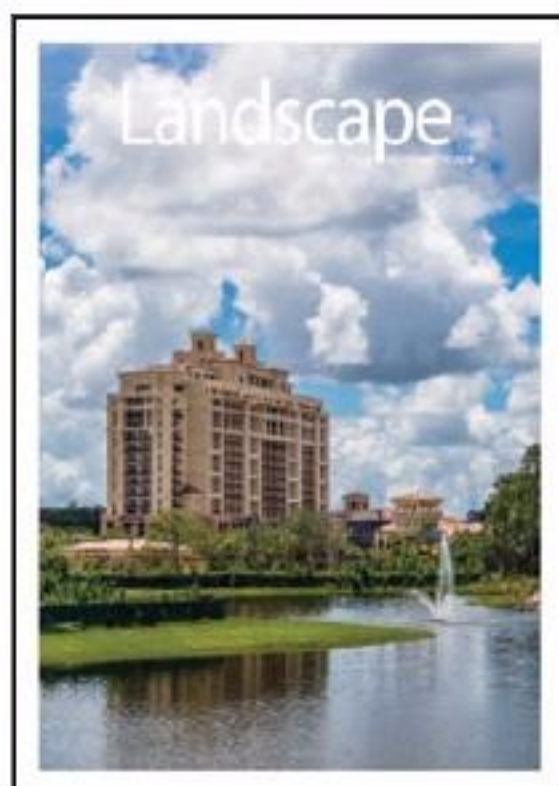
A committment you can trust.

Delivering the highest quality projects on time!

Focusing on **sustainable profitability** and long-term relationships based on **trust** and **mutual benefits** with all **stakeholders** - employees, customers, shareholders, suppliers, local communities and business partners.

UAE, Dubai, DIP1, Tel +971 4 8830100 | Fax +4 8830101
e-mail: info@greendmore.com

EDITOR'S NOTE



While the calendar year starts in January, the new season seems to begin in September across the Middle East. With the summer coming to an end, projects are developing and new ones are in the pipeline.

The team at Landscape ME are excited to hear that the Vice President and Prime Minister of the UAE and Ruler of Dubai His Highness Sheikh Mohammed Bin Rashid Al Maktoum has endorsed the fifth phase of the Jumeirah Beach Hotel expansion plan, which is set for completion in 2018. Delivered by global architecture, urbanism and design practice, Broadway Malyan, the project will see the addition of an ultra-luxury resort to the existing Jumeirah Beach Hotel, which will comprise of 350 hotel rooms, a dedicated new beach offering private beach experiences as well as recreational marine facilities.

Staying with the hotel theme, we take a look at the design behind the Four Seasons Resort Dubai at Jumeirah Beach. The schematic landscape design objective was to create a contextual and luxurious landscape, with a full range of experiences from communal space to quiet areas for relaxation and reflection while at the same time considering privacy, luxury and security. See page 22 for more.

From the Four Seasons Resort in Dubai to Florida, on page 24, global landscape architecture firm, EDSA, was commissioned to develop the master plan and provide full service landscape architecture design for Four Seasons Resort Orlando at Walt Disney World® Resort, which opened on August 3 2014. This 443-room luxury resort is positioned to become the first five-diamond resort on Walt Disney World® Resort property.

Further afield we take a look at the Domingo Eco-Community, a residential project located in Santo Domingo in New Mexico. The design approach aim was to establish a community with the organic urban farming operation, cultivating agriculture and productive landscape value to serve as a community resource and economic development opportunities in a dry land. Other Eco projects include the "Flavours Orchard" project on page 50- a pioneer project that fights for the conception of eco-responsible lifestyles along the Daguan River in Chin, connecting the city centre of Kunming, to the Dianchi Lake in the South.

We profile Green Studios on page 18 which was founded in 2009 by four friends, Architect Marc Abi Haila, Economist Jamil Corbani, Landscape Architect Zeina Kronfol, and Oliver Wehbe, Agricultural Engineer and Botanist. Over on page 44, we go behind the architectural and landscape design practice, IGA, which is based in Beirut. Established in 2004 with the dynamism of an energetic, experienced and motivated young team, the firm has gone from strength to strength, getting involved in major projects in Lebanon and across the Middle East.

Enjoy the issue!

John Hampton

The opinions and views contained in the articles in this publication are those of the contributors and not necessarily of the publishers. The publishers cannot be held liable for any mistake or omission enclosed in the publication.

For free subscription and to view the magazine please visit our website:

www.landscape-me.com

The First Specialised Landscape magazine in the Middle East

PUBLISHED BY:

MEMEDIA

Publishing

MEMedia Publishing FZ LLC
IMPZ

PO Box 485005, Dubai, UAE
Telephone: +971 4 4470927
Fax: +971 4 4470928

| Managing Partner: **Ziad Maarouf Amine** | Copy Editor: **John Hampton**
| Sales Manager: **Boushra Dinnawi** | Administrative Assistance: **Sarry Gan**
| Art Director: **Ramon Andaya** | Contributors: **Chris White, Zeina Kronfol, Jim Lee, Raven McMillan, Dr. Lerzan Yetim, Jun Shou, Rita Abou Samra, Vincent Callebaut**
| Printed by: **Al Nisr Publishing LLC** | Webmaster: **www.pdinventive.com**

Landscape is distributed free of charge in KSA, UAE, Qatar, Kuwait, Bahrain, Oman, Jordan, Egypt, and Lebanon by Emirates Post UAE



14

Contents

September 2014 - Issue 87

- 14** Fifth phase of Broadway Malyan-designed Jumeirah Beach Hotel expansion endorsed
- 18** The future regionally and internationally
- 22** Four Seasons Resort Dubai at Jumeirah beach".
- 24** EDSA completes design for the highly anticipated Four Seasons Resort Orlando at Walt Disney World Resort
- 30** Mystery of the trees
- 34** Interview with Fawzi Melhem
- 36** Desert farming moisturizer
- 44** Sustainable living environment
- 50** The Flavours Orchard



18





The Future of Irrigation Available Now



Optimized irrigation efficiency is a primary component in ensuring that landscape design objectives are effectively met.

Irrigation control technology has recently taken a major move forward in the form of 'Baseline' (www.baselinesystems.com) a range of irrigation control component solutions developed in the USA which address the need for a cost effective, user and maintenance friendly irrigation control system suitable for use in harsh landscape environments.

The 'Baseline' concept comprises moisture sensor driven single or networked mains powered or solar controllers each capable of operating multiple irrigation zones and each incorporating operation via two-wire 'bi-coder' decoder and/or conventional wire systems, plus interface with multiple 'bi-sensor' two-way soil moisture sensors, master valves and flow sensors.

Baseline is enabled for Ethernet, Wi-Fi, cellular modem and SCADA (System Control and Data Acquisition) systems. Baseline's moisture driven technology provides direct 'real time' feedback from representative plant type root zones to allow for **'Thermostat-like control' of the moisture levels** about each part of the landscape and thus real potential for achieving in excess of **+60% water savings** over conventional automatic (and +30% savings over 'ET' based) systems currently in use.

Most importantly 'Baseline' mode of operation (via moisture sensors within the plant root zone) ensures the correct moisture level is continuously maintained where it is needed
- No stress = optimum growth and appearance.

fitco

Intelligent Irrigation Solutions

A Complete Range of Quality Products for the Irrigation Professional

- Micro Irrigation
- Bubblers
- Sprays
- Rotors
- Sprinklers
- Automation Products
- Hydraulic Control Valves
- Fountains and Aerators
- Sensors
- Filtration
- Fertilizer Injection
- Back Flow Protection
- Mist Cooling
- Hose End

P.O. Box 16781 Jebel Ali, United Arab Emirates • Telephone : +971 (4) 222-1217 • Fax : +971 (4) 228-9130

E-mail : fitcoind@emirates.net.ae • Website : www.fitcoirrigation.com

News & Events



DAMAC PROPERTIES INTRODUCE 'AKOYA OXYGEN'

After the hustle and bustle lifestyle of AKOYA by DAMAC – “The Beverly Hills of Dubai”, DAMAC introduces a second lifestyle development modeled on escapism

18-Hole
Championship Golf
Course; 55 Million
Square Foot Project
in Dubailand, 30%
Larger Than AKOYA
by DAMAC

Following the success of AKOYA by DAMAC launched last year, DAMAC Properties announced today the introduction of a second master development in Dubailand, set to be the largest in the area.

AKOYA Oxygen, spread over 55 million sq ft, will showcase the greenest living spaces in Dubai with parklands, green open spaces and private gardens. The development, located off the Umm Suqeim road extension and approximately 10 minutes from AKOYA by DAMAC, will include various residential home options surrounding a championship golf course designed by a well known international golfing star.

AKOYA Oxygen is being developed along the ethos of ‘Escape The City’ and will be a lush green environment with an upscale resort feel. Luxurious residential properties will be integrated with retail and hospitality products including a five star Hotel, a luxury wellness centre featuring wellness therapies, yoga programs, herbal treatments, diet control and exercise. The fully-integrated community will also include globally-recognised retail brands, leisure & entertainment offerings, and organic market places all set within beautiful manicured landscaping.

Ziad El Chaar, Managing Director of DAMAC Properties said: “AKOYA Oxygen is set to be the first community of its kind in Dubai. It is being designed to be a masterpiece that isn’t

just architecturally accomplished, but also lives in harmony with the environment. We will be relocating over 4,000 trees into the development to ensure cleaner air and naturally cooler temperature. This will be in addition to many water features throughout the community”.

“When we created AKOYA Oxygen, we had a clear vision that is being translated into every component of the project. From low emission residences, to our utilizing of recycled materials, all this will contribute in transforming AKOYA Oxygen into the first green luxury residential address in Dubai. This green concept will be integral to this new community. Homes will incorporate energy efficient materials such as lighting, low-emission paints and solar water heating systems and will all feature strongly in the building process.”

Also within the development, the road network is designed in a way to minimize pollution.

El Chaar stated: “After the success of AKOYA by DAMAC, AKOYA Oxygen came as a logical continuity to this brand and an important step forward in further building on the success in terms of quality, innovation and our association with international brands”.

Established in 2002, DAMAC Properties has delivered almost 11,000 units to date and currently has a development portfolio of over 26,000 units at various stages of progress and planning as of June 30th 2014.



Be stylish. Be al fresco. Be Rattan House.

Discover unique shade creations by Umbrosa, available now for installation region wide. Gentle protection from the sun with maximum fashion appeal. Rattan House gives you stylish outdoors like never before. Our smart products are designed with unparalleled comfort and all-weather durability in mind.

Now with a variety of designer shade options from Umbrosa available, Rattan House makes it is easy for you to be the envy of all in your home, restaurant, hotel and other venues; transforming a tired outdoor area into a stunning energetic one, simply by choosing one of our products.

For a touch of class and distinction, call Rattan House, the region's industry leader in outdoor furnishing.

dubai@rattan-house.com

+971 4 338 2977

www.rattan-house.com

DUBAI | RIYADH | AL KHOBAR | DOHA | MUSCAT | AMMAN | INDONESIA



News & Events

COFELY BESIX FACILITY MANAGEMENT AWARDED CONTRACT FOR ALDAR HEADQUARTERS BUILDING



COFELY BESIX facility management, the region's leading integrated facilities management company, has recently been awarded a 3-year contract by Aldar Properties PJSC, to undertake the maintenance and operation of the Aldar Headquarters building located in Abu Dhabi.

COFELY BESIX facility management has been contracted to provide facilities maintenance services, including MEP, cleaning, landscaping and irrigation, HV systems, FA & FF systems, CCTV/ Access control systems, BMU, BMS, pest control, elevators, as well as 24-hour helpdesk.

The iconic Aldar building is the first circular building to be constructed in the UAE. Designed by MZ & Partners, the unconventional shape of the building, with two circular, bulbous, curved glass facades, offers open office and commercial space with flexible partitioning across 23 floors. The building was also voted as the "Best Futuristic Design 2008" by the Building Exchange Conference.

"We are very pleased and excited to have been entrusted to provide services to another prestigious and iconic building in the region," added Ian Harfield, CEO of Cofely Besix facility management.

"It adds to the demonstrable experience and level of service that Cofely Besix is able to offer, and we look forward to extending our working relationship with Aldar."

The Aldar Headquarters provides 22 floors of commercial office space and covers a total gross floor area of 61,900 square meters. The building has 4 levels of car parking with 1184 parking spaces, as well as 3 external kiosks, 2 internal cafes, 21 lifts, a mixed and female gymnasium, and male and female prayer rooms. The building was developed in accordance with the LEED requirements of the U.S. Green Building Council.

BUILT TO CONSERVE

**THE HUNTER MP ROTATOR.
THE INDUSTRY'S MOST
EFFICIENT NOZZLE.**



The MP Rotator's nozzle pops up from its protected position only after the riser is fully extended, providing a superior defense against dirt and debris.



The MP Tool makes radius adjustments easy; matched precipitation is maintained at any arc or radius.

THE MP ROTATOR® IS THE NOZZLE OF CHOICE FOR WATER CONSERVATION.

Hunter's MP Rotator delivers multi-trajectory streams at a slower rate, allowing water to gently soak into the soil, significantly reducing runoff. The MP Rotator's uniform distribution results in 30% less water use when compared to traditional sprays, and covers distances of up to 10,7 m. And now, the **NEW** MP800SR offers increased versatility for spaces as tight as 1,8 m.

MP800SR



MP1000



News & Events



SIM LEISURE DELIVERS SINBAD'S KIDS CLUB ON THE PALM JUMEIRAH BY JOSIE BOOTH

Three elegantly designed office buildings combined with luxurious lifestyle amenities with ultra-modern office environment



Previous to the delivery of the project, the hotel was lacking suitable entertainment for children.

The location of the proposed Kid's Club within the grounds of the Hotel was an unused area, crying out for development into an alternative use. The Sim Leisure design team took the project on as an exciting challenge that allowed them an opportunity to become kids again.

Features of Sinbad's Kids Club include an entrance kiosk with a custom designed park map, a climbing wall on a faux-rock structure, Sinbad's 'castle' playhouse, and an iconic whale play structure.

The whale structure, inspired by the story of the First Voyage of Sinbad, is the central feature of the park. This large 9 meter long whale equipped with 3 waterslides, raining palm trees and colourful 'friends' has been a big hit with guests. The Whale was fabricated by Sim Leisure's talented and skilled team of artists and sculptors. The internal framing had to be incredibly

strong whilst also being suitable for the consistently wet conditions. The outside finish was specially hand painted and developed to give the fun details and also withstand the chlorine in the water. Additional features such as the rock bench, 'blow hole' fountain, pirate octopus and lounging turtle make the space truly unique.

The outside of the Playhouse building was constructed to give the appearance of a magical Sinbad's Castle hideaway. Whilst bright and eye catching colours were used, the appearance still managed tie in with the design of the existing hotel building. The interior of the building continues the theme, with a stronger accent. A large hall, with a central themed stage allows shows, events and parties to be held in a comfortable setting, whilst the soft play area gives toddlers a fun place to explore. A variety of games are located within the central area, including foosball, air-hockey and games consoles. Sinbad's Kids Club began operation in May 2014 and has already created a positive buzz with hotel guests.



Artistic Floors from Toscano – ITALY



Composite Deck from – JAPAN



Lamalva an Outdoor Furniture with LED–SPAIN



GEMSS Enriched Wood Surfaces

“Region’s first concept showroom villa dedicated for Woodfloors, Outdoor Decking & other related unique products”

“FND IS A THEME VILLA SHOWCASING THE ESSENCE OF FLOORING...BE IN INTERNAL OR EXTERNAL.

FND showcases Products from best of Europe and Japan. Products that reflect your personality and life style with the atmosphere you dwell with”.



Floors & Decks

Villa 300 | Jumeirah 2 | Jumeirah Beach Road | Dubai - UAE

T: +9714 3435 148 - F: +9714 3435 149
E: info@floorsndecks.com | www.floorsndecks.com

SHOWROOM VISIT BY APPOINTMENT ONLY

Flooring Specialist



Lamalva an outdoor furniture with LED-Spain

Floors and Decks (FND), a UAE-based flooring specialist, has opened a new concept showroom in Dubai. The outlet showcases a wide range of products for indoor application such as wooden design tiles, patterned flooring, random floors, customized design floors, and a combination of wood, stone and metal. It also offers floors for outdoor applications in real wood and WPC, a wood and plastic composite.

Apart from supply and installation of timber and WPC flooring, FND also carries out refurbishment of timber flooring and its maintenance.

FND has recently bagged a worth Dh1-million (\$272,000) project involving the supply and installation of wood design tiles for two restaurants at the Four Seasons Jumeirah. This collection from the Italian brand called Parchettificio Toscano is based on Tuscan talent

and traditional craftsmanship, creating a product of outstanding artistic and technological quality. Work on this project will start by next month and will be completed in two months, said A Vakil, CEO of Floors and Decks.

Some of the other recent projects executed by the company include the Beach Project at Jumeirah Beach Residence (JBR) in Dubai Marina, where it supplied WPC decking. Work on the project, valued at Dh5 million (\$1.36 million), started in the fourth quarter of 2013 and was completed in May this year.

Commenting on its performance, he said: "Growth for us has been steady. Business has been stable during the past years and we have not only registered stable growth, given the buoyancy in the UAE economy and foreign investments flowing in, but have also expanded many fold throughout these years. Since our inception, we have grown from one showroom to two. Our second showroom is a first of its kind in the region. This year, we are planning to introduce many new products including timber flooring in modern designs and trendy colours for outdoor applications.

Commenting on the company's plans for the future, he said: "We have the vision of becoming the market leaders and this can only be achieved by offering new and innovative designs, products that are sustainable and the best services. We have plans to participate in leading exhibitions in the UAE and other parts of the Mena (Middle East and North Africa) region. We will also





*Artistic
Floors from
Toscana Italy*



Gemss enriched wood surfaces



Composite Deck from Japan

FND has lately introduced two new products for wall covering and modern design furniture for outdoors and indoors. The wall cover is a brand called Gemss, incorporating European technology, designed with wood lovers in mind. Meant for unique wall and surface decors, it is composed of natural solid woods in different species and comes in different colours.

“The product is made of different species of woods and is meant for those who love unique collections of woods as each piece is handcrafted. Each one is unique in terms of colour, warmth and wood fragrance,” said Vakil. “This product showcase an imaginative use of wood in the spaces that you design.”

Gemss can be used on unconventional surfaces of any size and shapes to enhance the richness of the indoor and limited outdoor spaces.

The other new product from Lamalva of Spain, which creates and manufactures innovative and modern furniture. This furniture has cable-free LED (light-emitting diodes) lights, is produced in trendy colours and features artistic finishes, said Vakil.

“FND’s thought process is different from the others in the field. We have introduced a new range of products that are unique to ensure that when customers visit FND they will see everything that they require to furnish their dream house. We offer our customers a complete bespoke package, which can be put together to suit a variety of budgets and as per their desire and needs,” he added.

participate in seminars so that we can directly interact with customers and understand the market trends and requirements.”

News & Events

HOK TO ACQUIRE 360 ARCHITECTURE

Union creates one of the world's leading sports and entertainment design firms



360 Architects designed Basrah Sport City in Iraq, which includes a stadium with 65,000 seats.

HOK, a global design, architecture, engineering and planning firm, recently announced an agreement to acquire leading sports facility design firm 360 Architecture. 360 has designed Basrah Sports City in Iraq (which includes a 65,000-seat stadium), a retractable-roof stadium for the NFL's Atlanta Falcons, the Rogers Place arena for the NHL's Edmonton Oilers, a new stadium for the Major League Soccer's San Jose Earthquakes and many other high-profile professional and collegiate projects.

This acquisition is historic for both firms as well as for the sports industry. The resulting partnership is a significant development that will elevate sports and entertainment facility design. The impact on the industry will be immediate, global and a game changer for all stakeholders, including the millions of fans and players who expect and deserve a world-class sporting experience.

THE INAUGURATION OF FUTURE LANDSCAPE & PUBLIC REALM QATAR ON 27-28 OCTOBER 2014

Advanced Conferences & Meetings is proud to announce Future Landscape & Public Realm Qatar – powered by Project Qatar, a leading landscaping and outdoor design conference that will be held on 27-28 October at The Intercontinental Hotel – The City, in Doha Qatar. This conference is being supported by the Ministry of Municipality & Urban Planning, Qatar.

The program for Future Landscape & Public Realm Qatar, the latest event in the Project Qatar Business Intelligence Series, will feature two presentations by the Ministry of Municipality & Urban Planning on the role of the Ministry in developing Qatar's Public Realm vision and on preparing Qatar's Public Realm for the FIFA World Cup 2022.

In addition to the Ministry of Municipality & Urban Planning, the Public Works Authority

– Ashghal – will also be well represented with speakers participating in two panel discussions on incorporating sustainability goals into Public Realm strategy and on the importance of fully considering the end-user requirements when designing and constructing landscaped spaces.

Other organizations who have confirmed their participation include:

AECOM
ARUP
Arab Engineering Bureau
ATKINS
Hamad Medical Corporation
ICZMP State of Qatar Environmental
Hydraulics Institute IHCANTABRIA
KEO
Oman Botanic Garden
Parsons Brinkerhoff
Perkins + Will
Qatar Green Building Council
Qatar Project Management and Qatar
University

The conference is also officially supported by the Qatar Green Building Council and the Qatar Society of Engineers.

With such high caliber speakers and supporters, the discussions at Future Landscape & Public Realm are certain to contribute to the future of the landscaping industry in Qatar and will highlight valuable opportunities.

Visit: www.futurelandscapeqatar.com for the full line-up of speakers and further details on what these organizations are going to be speaking about and the case studies that will be featured.

To reserve your place as a delegate or to find out more about sponsorship opportunities at Future Landscape & Public Realm Qatar, visit www.futurelandscapeqatar.com, call +971 4 361 4001 or email us at opportunities@acm-events.com




**Al Jaber
Landscape LLC**

*Subsidiary Company
of Al Jaber Group*



The Landscape Solution ...

**Design & Estimation | Soft Landscaping | Hard Landscaping
Irrigation | MEP Works | Landscape Maintenance | STP's & RO's**

SEASHORE VILLAS
ABU DHABI

PROJECT Location: Abu Dhabi, UAE



UAE : P.O. Box 2175, Abu Dhabi | Tel. No. +971-25554300 | Fax No. +971-25553370
QATAR : P.O. Box 23007, Doha | Tel. No. +974-44250444 / +974-4441180 | Fax No. +974-44411885
SAUDI ARABIA: PO Box 14119 | Riyadh | Tel. No. +966-11-494-5936 / Fax No. +966-11-494-5901
E-mail : aljaber.landscape@aje.ae | Website: www.aljaber.com

HOTEL

Vice President and Prime Minister of the UAE and Ruler of Dubai His Highness Sheikh Mohammed Bin Rashid Al Maktoum has endorsed the fifth phase of the Jumeirah Beach Hotel expansion plan, which is set for completion in 2018.



Jumeirah Beach Hotel Extension

Fifth phase of Broadway Malyan-designed Jumeirah Beach Hotel expansion endorsed



Jumeirah Beach Hotel Extension

The master plan, vision and concept for the expansion are delivered by global architecture, urbanism and design practice, Broadway Malyan. The company creates world-class and fully-integrated cities, places and buildings to unlock lasting value and deliver a 'return on design'.

The project is undertaken on behalf of Jumeirah Group, with the practice's expert designers in Abu Dhabi, Lisbon and Portugal, partnering closely with the client on the project. It will see the addition of an ultra-luxury resort to the existing Jumeirah Beach Hotel, which will comprise of 350 hotel rooms with panoramic beachfront views of the Burj Al Arab and a dedicated new

PLATIPUS TREE ANCHORING SYSTEMS

**Deadman Systems
Tree Irrigation Systems**

**Palm Tree Anchoring
Rooftop Tree Anchoring**



WT Burden Middle East FZCO, Jebel Ali Free Zone, FZ S1 AE07, PO Box 261378, Dubai – UAE

T: +971 4 8860 700

F: +971 4 8860 701

E: civils@wtburden.ae

Official Distributor

wt Burden

@ info@platipus-anchors.com



www.platipus-anchors.com



+44 (0) 1737 762300

HOTEL

beach offering private beach experiences. In addition to recreational marine facilities that include spas, health clubs, elevated tennis courts, a world-class sports complex and a range of ocean-facing retail, food and beverage outlets.

The new resort will see extensive expansion of the existing yacht marina, doubling its current capacity. It will also offer a variety of vibrant leisure facilities, equipped with state-of-the-art entertainment amenities. The expansion project is in line with His Highness Sheikh Mohammed Bin Rashid's vision to strengthen Dubai as a global tourism hub and position the Emirate as the number one tourism destination worldwide. It supports the implementation of Dubai Vision 2020 to attract 20 million tourists by 2020.



zeoplant



زيوبلانت

Natural irrigation water reduction with
the World's most efficient
Mineral Moisture Retaining Soil Additive.

Successfully implemented and proven in the most
challenging landscaping projects in the Gulf.

Zeoplant L.L.C. - P.O.Box #72412 - Dubai - U.A.E. - Telephone: +971 4 447 3588 - Fax: +971 4 447 3587

info@zeoplant.com - www.zeoplant.com

GREENWALLS



BB House Lebanon



Stay, Solidere

The Future Regionally and Internationally

Green Studios was founded in 2009 by an eclectic group of 4 friends: Marc Abi Haila an architect, Zeina Kronfol a landscape architect, Jamil Corbani an Economist and Oliver Wehbe an agricultural engineer and botanist.

They had one common vision: to reshape the urban tissue by weaving greenery into the city's architecture using innovative & technological designs.

With this multidisciplinary and diversified approach green studios was set to work with architects, Real estate developers and governmental institutions to change the application of greenery in tomorrow's architecture and influence the field of architecture.

Following a year of extensive research, trials and sampling at its Nursery (located on the coast where ambient temperatures reach 50°C plus under green house), Green Studios managed to develop its own green wall system,

Sultan Ibrahim Lebanon.



Le Mall Dbayeh, Lebanon



Cairo Outdoor green wall





Cairo Outdoor green wall

adapt it to hot weathers and successfully patent it in Lebanon.

Green Studios is now able to execute green walls using the most advanced technology in agriculture 'Hydroponics' that allows substituting agricultural soil with a specially engineered medium.

That's when they first exhibited their product in Project Lebanon2010 and captured the attention of award winner, French architect Alain Moatti who was commissioned by Solidere to design 2 restaurants Sweet Tea & Stay in the Souks of Downtown Beirut. Green studios turned the 4 walls of the roof of sweet tea into a living jungle amidst the urban setting of this souk.

Having mastered this technology of hydroponics, Green Studios managed to exclusively partner with zinco one of the world's leaders in green roof technology which reinforced their position in this new field applied on landscaping.

Winning the best business plan of the year in 2011 at the MIT enterprise forum of the pan Arab region, broadened green Studios network beyond the circle of architects and designer. A year later green studios won Lebanon best business of the year2012.

Solidere's projects and other green walls at that period (2011-2012) displayed a strong proof of concept to Green Studios' technology and lead them to become a visible presence in Lebanon, where they won the design and execution of the 812 sqm green roof of the Central bank headquarters under the supervision of UNDP-CEDRO. Shortly after Green Studios landed one of the biggest Green wall project in Cairo with Raya Corporation.

In 2014 Green Studios got selected as Endeavor's high impact entrepreneur, at the 52nd International Selection Panel in Indonesia. Few months later, the partners registered a US company in California and filed for another updated and improved US patent. This new version is now 'SMART': it allows its irrigation and nutrition settings to automatically adapt according to external conditions.



Stay, Solidere



VORTEX
A CLEAR
SOURCE
OF
FUN

We turn your big ideas into unique aquatic play amenities that build strong communities, create amazing guest experiences and keep families coming back for more!

VORTEX

World leader in aquatic play solutions with over 5,000 installations worldwide
vortex-intl.com • info@vortex-intl.com
1.877.586.7839 (free USA/CND)
+1.514.694.3868 (Intl.)

GREENWALLS

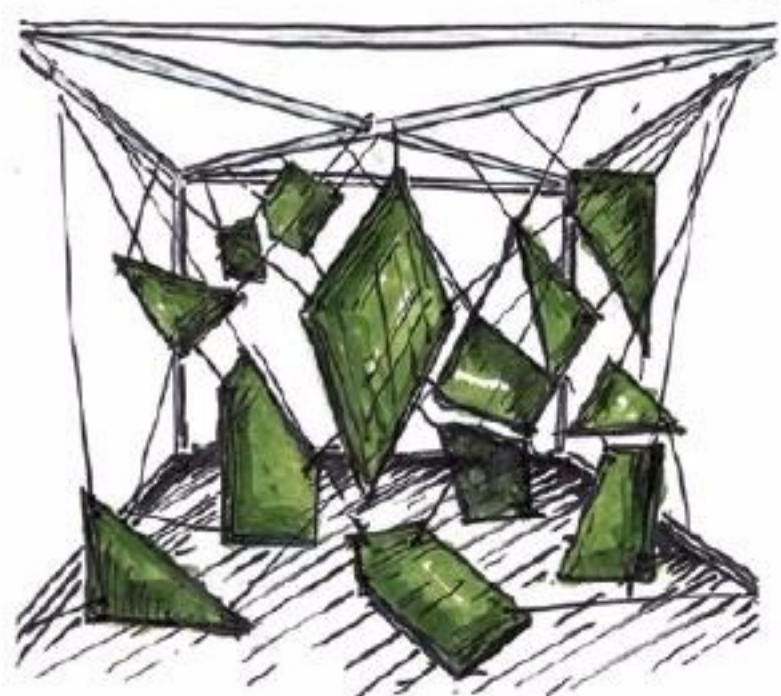
Green Wall, Jordan.j



mutated landscape floating clouds



mutated landscape swinging webs



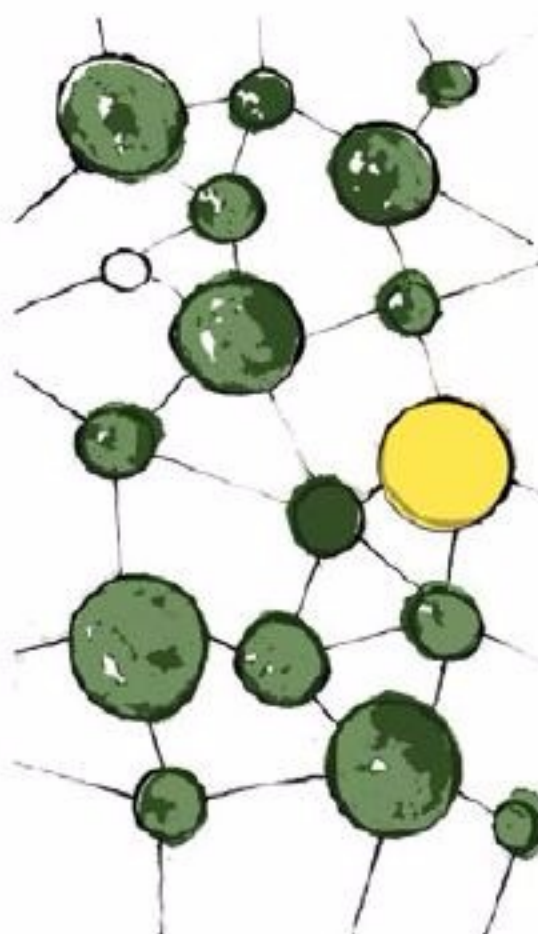
Today green studios' green wall and roof garden systems are engineered for hot weathers with smart components that will lead the way to shaping future cities in the Arab world.

Five years later, this platform achieved tangible successes thanks to its portfolio that lead to its nomination by Herzog & de Meuron, a Pritzker Prize winning Swiss architectural firm, to install 93 green walls for Beirut Terraces. At the same time, Green Studios got granted the green wall execution of the residential tower in Beirut which will be the biggest outdoor green wall in the Arab world. Also Green studios is working on an outdoor green wall for a boutique hotel in Alsace, France.

With all this happening, Green Studios always seeks to tackle projects using its dual thinking process that bounces back and forth between design and technology, a modus operandi that has become their identity.

With this spirit, Green Studios is constantly creating and testing new design ideas together with the R&D team. This

Mutated landscape suspended dots



newly entrenched chapter in landscaping is labeled *mutated landscapes*

A sample of these mutated landscapes entitled "Floating Garden" were recently exhibited at Beirut Design Week in June 2014 and at Allees des arts exhibition.

With this new mutated approach to landscaping, green studios tends to influence future cities by using its technology to intervene on facades of buildings and create new urban installations that involve greenery where it was once impossible.

Since its inception in 2009, Green studios has matured to become one of the pioneers in the region to design, execute and maintain Green walls and roof gardens. Requests from all over the Middle East are already pouring in.

Thus the company's expansion plans are twofold one regional across the MENA / Levant area and another one global starting off in the US with a base in California.

Regionally Green Studios participated in the ME Smart landscape Summit in May 2014 in Dubai and will be sharing its vision on the potential of development of future cities using its technology at the region's most anticipated real estate exhibition in Dubai, Cityscape Global.

And to set forth its entering into the US market, Green Studios will be exhibiting at the American Society of Landscape Architects' annual meeting and expo in Denver, Colorado, in November.

**is a new school of thought/ perspective resulting from GreenStudios' technological breakthrough.*



Committed to quality



Design and Execution

- Soft & Hardscape
- Swimming Pools & Water Features
- Irrigation System
- Outdoor Lighting
- Playground Equipment

SATMA
International L.L.C.



ساتما
العالمية ذ.م.م



American Concrete Institute®



ISO 9001 & 14001 Certified
Email: satmaint@emirates.net.ae



US Green Building Council

بلدية دبي
DUBAI MUNICIPALITY



American Society of Landscape Architect

PO Box: 48856, Dubai, UAE. Tel: +971 4 2956088, Fax: +971 4 295 60 77

Partner with **AL SABEL** Project Contracting LLC

PO Box: 99985 Riyadh, 11625 KSA, Tel: +966 1 291 35 62, Fax: +966 1 291 35 64

Email: satmaint@emirates.net.ae



“Four Seasons Resort Dubai at Jumeirah Beach”.

Situated on a 270 metre pristine beachfront, the luxurious Four Seasons Resort Dubai at Jumeirah Beach is intimately scaled and just ten minutes from the commercial district on Sheikh Zayed Road, the Dubai International Finance Centre, as well as the Burj Khalifa and tourist attractions of Downtown Dubai.

The schematic landscape design objective was to create a contextual and luxurious landscape, with a full range of experiences from communal space to quiet areas for relaxation and reflection while at the same time considering privacy, luxury and security.

The landscape plant palette takes cues from Mediterranean and tropical landscapes.





The hotel arrival sequence takes on the character of a palm terraced hillside with accents of colour and fragrance. The resort side is much more intimate, utilising the base planting palette established at the entry and expanding it to introduce more varied opportunities for colour, fragrance, and form.

Also, the landscape, as a whole, will be developed as an outdoor gallery. Locally produced sculpture and artwork will be widely prevalent, situated on major view axis and within a variety of garden rooms and landscape areas.

Client: HH Investment and Development LLC

Scope: Master Planning, Detailed Design and Construction Administration Services

Scale: 5.6 hectares



 **gulf leisure**
www.bbq-warehouse.com

outdoor kitchens & fire bowls

www.gulf-leisure.com | enquiries@gulf-leisure.com | +971 43 791 390

WORLD RESORT

EDSA COMPLETES DESIGN FOR THE HIGHLY ANTICIPATED
FOUR SEASONS RESORT ORLANDO AT

Walt Disney

WORLD RESORT

The global landscape architecture firm, EDSA, was commissioned to develop the master plan and provide full service landscape architecture design for Four Seasons Resort Orlando at Walt Disney World® Resort, which opened on August 3 2014.



Practicing since 1960 EDSA is one of the largest US based firms of its kind. Their diverse portfolio of more than 500 completed projects in 100 countries includes plans, designs and built works in the areas of hospitality, entertainment, campus, residential, ecotourism, urban revitalisation and mixed-use districts. EDSA's expertise in planning and landscape architecture, hardscape design, water feature design and attention to detail unifies the ambiance of this highly anticipated resort.

According to Rob Hutcheson, EDSA Vice President and Project Manager, "Our goal is always to ensure that the guest experience touches every aspect of our project design. Beyond creating outdoor spaces that have a positive influence on people, we want visitors, residents, and patrons to enjoy the exploratory journey of getting there. We care deeply about the human experience and how the users of the Four Seasons Resort Orlando will feel, act, respond, and enjoy the spaces we created." Nestled within Disney's new Golden Oak residential community, this 443-



WORLD RESORT



room luxury resort is positioned to become the first five-diamond resort on Walt Disney World® Resort property. Playing off the 26 acres of naturally lush Floridian environment, EDSA's design vernacular has been created to fit within the natural environment with a soothing colour palette. Set around a feature lake and adjacent wetlands, the resort includes meeting space, restaurants, a spa, fitness centre, pools, a business centre, multiple outdoor function areas and a large recreational island.

With its references to European design, the property's design reflects a timeless, classic architectural style, while being attuned to contemporary resort living. The main resort tower and function spaces have been positioned to take advantage of views over the lake, lushly landscaped grounds, golf course, wetlands, and night-time views from select guestrooms and the rooftop restaurant of the Magic Kingdom Park® fireworks. Characteristic design features include loggias, colonnades, columns and arches, grand sweeping stairways and decorative metal work.

Working with the Mediterranean-style architecture, EDSA approached the landscape, hardscape and waterscape design with careful thought to create spaces that maximise the indoor/outdoor relationships. Medjool Date Palms were used to create a canopy on the main promenade that leads guests to the various outdoor amenities. As partitions along the promenade, pillars of Italian Cypress help create a series of rooms including outdoor meeting rooms, an al fresco restaurant, and function lawn and fitness centre. They



Forest creates a natural space where nature is combined with endless delightful adventures in a natural and fun environment full of climbing ramps, vines, bridges, etc.. It is a completely innovative playground design.

wt Burden

ISABA

Projects

www.burdens.co.uk

www.isaba.com

Street Furniture & Playground Equipment Supplier

Tel: +971 4 8860 700 • Email: streetfurniture@wtburden.ae • www.wtburden.ae

WORLD RESORT

are partnered with Sylvester Palms to reinforce the decorum of the infinity-edge adult pool and lake. Finally, large sculptural Crape Myrtle Trees create a tunnel gateway to Explorers' Island

EDSA created a water canal to transition from the formality of the Mediterranean gardens to the natural organic feel of the recreational island. Explorer' Island was conceived as a Citrus Plantation Estate built in the 1800s that sits on a bluff overlooking the lake. Nearly 50 mature Live Oaks, spanning over 30 feet wide, were transplanted from the neighboring Four Seasons Golf Course. The estate is home to a family pool with tiered stadium seating, showcasing "dive-in" movies played on a built-in screen; lazy river; two

waterslides; a climbing wall; a lakeside bar and grill; Kids For All Seasons kids club with a playground, as well as outdoor recreation spaces. Naturally curved Sabal Palms line the lazy river creating a native Sabal hammock commonly found near Florida wetlands

Along the west side of the lake, native ornamental grasses, oaks, Sabal palms, and pine trees were used to help transition the formal gardens back to the surrounding native wetlands and canal that flows from Bay Lake. Overall, there are 114 different plant species on the property with a total of 2500 trees and approximately 80,000 shrubs and groundcovers.

Since opening the doors of its Orlando

office, EDSA has continued to maintain a strong presence in the Central Florida community by working on many notable local projects including: Grand Cypress, Orlando World Centre Marriott, Disney's Caribbean Beach Resort, Hyatt at Grand Cypress, Peabody Orlando, Gaylord Palms Resort & Convention Centre, Wyndham Orlando Resort and the Orlando International Airport.

"We've been thrilled by the reception from the Central Florida community over the past few years and truly appreciate the opportunity to work on projects that are so important to the economy, environment and culture here," says Hutcheson.





Transgulf Cement Products L.L.C.

عبر الخليج للمنتجات الاسمنتية ذ.م.م.

Pavers



Kerbs



Tiles



**Masonry
Blocks**



Precast



Dubai office:

Jebel Ali Ind. Area. P.O. Box 25595, Dubai, U.A.E

Tel : +971 4 8801020. Fax : +971 4 8801021

Email : info@tgcp.ae.

Abu Dhabi office:

P.O. Box 131329, Abu Dhabi, U.A.E

Tel : +971 2 6797959. Fax : +971 2 6797960

Email : info@tgcp.ae.

For more information please visit
Web : www.tgcp.ae

MYSTERY OF THE TREES

Dr. Lerzan Yetim
Senior Landscape Architect
e-mail: lerzan.yetim@dargroup.com

Sketcher: Michel Fadoul
Architect
e-mail: michelfadoul@hotmail.com

There was, there was not...When human beings first appeared, they needed food, shelter and clothing thus our story has started long time ago between humankind and trees...

To experience the wonder and beauty of trees and to honor and respect them, unlike many resources focus on the botanical aspects of trees or describe simple tree-planting procedures, I hereby tell you the folktales, cults and myths of the trees. Some stories from mythology and myths relating directly to trees while others from urban legend, folklore or stories from environmentalists, storytellers and tree lovers!

Beyond their natural looking, trees have been cultural and social symbols, totems and icons. Trees are creatures of admiration, reverence, fear, romance, mysticism, and worship to the people around them.

Humankind has considered trees as a symbol of the earth since they are providing shelter, changing seasonal color, holding special religious believes, feeding the human and providing industrial values.

There was, there was not...When human beings first appeared, they needed food, shelter and clothing thus our story has started long time ago between humankind and trees...



When someone called as 'Weird' Try to see it as 'Beautiful in its own way'



Baobab Tree (Adansonia)
Upside-Down...

Adansonia or Baobab tree is a strange looking tree which is also called the upside-down tree because when bare of leaves, the spreading branches of the Baobab look like roots sticking up into the air, as if it had been planted upside-down. Further more than scientific truth a legend describes how the tree look like 'what happens if you are never satisfied with what you already have'...

"The baobab was among the first trees to appear on the land. Next came the slender, graceful palm tree. When the baobab saw the palm tree, it cried out that it wanted to be taller. Then the beautiful flame tree appeared with its red flower and the baobab was envious for flower blossoms. When the baobab saw the magnificent fig tree, it prayed for fruit as well. The gods became angry with the tree and pulled it up by its roots, then replanted it upside down to keep it quiet."



The baobab (Adansonia) is a genus of eight species and native to Africa and Australia. The original look of trees comes from water stored and swollen trunk (up to) to endure the harsh drought conditions particular to each region. All occur in seasonally arid areas, and are deciduous, shedding their leaves during the dry season.

Cultivation	Characteristics
<ul style="list-style-type: none"> Cultivation: Low maintenance Light: Sun Soil: Mid-Fertile, Poor, Clay, Sand pH: 6, 7 Moisture: Medium, Dry, Well-Drained 	<ul style="list-style-type: none"> Form: Semi-deciduous Tree Habit: Deciduous Family: Malvaceae Genus: Adansonia Origin: Africa and Australia Hardiness zones: 10B-12 Flower: Small Fruit/Seed: Small Foliage: Leaves, Green Use: Ornamental, Edible



...“ in order to protect the Cedar Forest
Enlil assigned (Humbaba)
as a terror to human
beings,
Humbaba's roar is a
Flood, his mouth is Fire,
and his breath is Death!...
(The Epic of Gilgamesh)

Cedar Tree (Cedrus libani)
Represents earth, longevity and
spirituality...

A mature cedar of Lebanon is a stately and picturesque evergreen conifer. The symbol of strength comes from its massive trunk and very wide spreading horizontal branches. Most of the stories show us the admiration to the trees is not a coincidence; the reason that behind this humankind is impressed of the strength, powerful and longevity of the trees.

Strength and usefulness of Cedar's wood made it important at the region and was exploited by the Assyrians, the Babylonians, the Persians, the Phoenicians, the Egyptians, the Romans and the Turks. The Cedar Forest is the glorious realm of the gods of Mesopotamian mythology. It is guarded by the demigod Humbaba and was once entered by the hero Gilgamesh who dared cut down trees from its virgin stands during his quest for immortality.



The Cedar Forest is described in Tablets 4-6 of the great Epic of Gilgamesh. Early translators of the Epic have assumed that the "Cedar Forest" refers to the Lebanon Cedars.

Cedar (Cedrus) is a genus of coniferous trees in the plant family Pinaceae. Cedar of Lebanon (Cedrus libani) is named for the famous forests that grow in Lebanon.

Cultivation	Characteristics
<ul style="list-style-type: none"> • Cultivation: Easy-To-Grow • Light: Sun, Dappled, Part-Shade • Soil: Mid-Fertility, Poor, Loam, Clay, Sand, Rock • pH: 6, 7 • Moisture: Bog, Wet, Medium, Dry 	<ul style="list-style-type: none"> • Form: Conifer Tree • Habit: Evergreen • Family: Pinaceae • Genus: Cedrus • Origin: Lebanon • Hardiness zone: 6-9 • Flower: Small, Carkin • Fruit/Seed: Medium, Cone, Green, Brown • Foliage: Needles, Green, Silver • Uses: Ornamental, Craft, Industrial



No tree is more graceful
None more romantic...

Willow has the ability to
adjust and adapt to life
rather than fight it as
it's less demanding and
more flexible.
In relating this growing
ability and flexibility
to mankind, the willow
symbolizes that we all
need to keep growing
and reaching regardless
of where we live.

Willow Tree (Salix babylonica)
The symbol of the romance...

To be famous as a symbol of romanticism is not coincidently, floating gracefully at waterside, the weeping willow evokes romantic vistas of foliage stirring with each breeze. Branches droop gracefully, stem tips gently stir still water into rippling circles.

Some say that the weeping willow once stood upright and strong, but the death of star crossed lovers so touched the heart of the trees that they bent in abject grief and were never able to straighten themselves again. Still others say that they weep for the pain that mankind inflicts upon one another and that they will right themselves, once again, when a new era of peace and kindness becomes a reality.

Once, in a land of magic and myth, Xylia, loved the Zeus and she transformed into a Willow tree because of her desperate love towards him. Aphrodite, goddess of love and beauty, decided to leave a memory of Xylia behind. She made these "weeping willows" grow all around the world, as a careful reminder that love cannot exist without tears.



Willows, form the genus Salix, around 400 species of deciduous trees and shrubs, found primarily on moist soils in cold and temperate regions of the Northern Hemisphere. Weeping willow is believed to be native to central Asia (western China). By an early date it had spread to the Middle East.

Cultivation	Characteristics
<ul style="list-style-type: none"> • Cultivation: Invasive, Naturalizing, Low-Maintenance, Easy-To-Grow • Light: Sun, Dappled • Soil: Rich, Mid-Fertility, Poor, Loam, Clay, Sand, Rock • pH: 7 • Moisture: Bog, Wet, Medium, Dry, Well-Drained 	<ul style="list-style-type: none"> • Form: Tree, Big Shrubs • Habit: Deciduous • Family: Salicaceae • Genus: Salix • Origin: China • Hardiness zone: 4-9 • Flower: Medium, Small, Carkin • Fruit/Seed: Small • Foliage: Leaves, Green, Silver • Uses: Medicinal, Ornamental, Industrial



The olive tree says to its master:

"Care for me and I will nourish you. Water me and I will make you rich"
(Proverb from the Mediterranean)



Represent eternal life with sculptural aerial root...

Olive Tree (*Olea europaea*)

The symbol of peace and longevity...

The olive tree being indigenous first appeared in the eastern Mediterranean where some of the most ancient civilizations developed. It has gone beyond the boundaries of the landscape for most of the Mediterranean people, the olive tree has been seen throughout history as almost holy - a symbol of peace, victory, and the endurance of life itself - evoking feelings of bonhomie, vitality, and health. The ancient trees grow in wondrous, tangled ways, with trunks resembling characters in fairy tales.

The Olives - *Olea* is a Genus of about 20 species in the family Oleaceae, native to warm temperate and tropical regions of southern Europe, Africa, southern Asia and Australasia. The most important species is by far the Olive (*Olea europaea*), native to the Mediterranean region. In Greek mythology, Zeus pronounced Athena the victor in a competition because it was she who had bestowed upon mankind the most useful plant of all: the olive tree.

Palm Tree

(*Phoenix dactylifera*)

A Tale in the Desert...

Date palm has special religious, feeding and industrial values since ancient ages. Religions, traditions and legends mention about date palms frequently. Ancient Egyptians used date palm leaves as an emblem of longevity; the excavations revealed a kneeling man holding in his hands a bunch of palm leaves for longevity. Even its botanical name, *Phoenix dactylifera*, refers to myth. The phoenix, of course, is the legendary bird, inhabitant of Arabia. It most likely referred to the Phoenicians, Phoenix, the son of Amyntor and Cleobule in Homer's *Iliad*, or the Phoenix, the sacred bird of Ancient Egypt.

Furthermore its edible fruits and economic benefits, 'Date Palm' is an ornamental palm which is grown outdoors where it must be exposed to the sun; it is grown chiefly as an ornamental plant on account of its slender habit and foliage.

Indian banyan tree (*Ficus benghalensis*) Represents eternal life...

Banyan tree (*Ficus benghalensis*) is a figure prominently in several Asian and Pacific religions and myths. It is sacred to Hindus and Buddhists and is frequently planted around temples with respect. According to Indian culture it is also believed that women pray for the prosperity and longevity of their husbands.

Beside its landscape value the olive tree is one of the heartiest of all trees on the planet: able to survive salt water, adapting itself to almost any sunny and temperate environment, able to thrive in most soils, retaining its leaves year round, and living in some cases more than a thousand years, occasionally bearing fruit for centuries.



Cultivation	Characteristics
<ul style="list-style-type: none"> Cultivation: For-Gardeners, For-Horticulturists Light: Sun Soil: Mid-Fertile, Poor, Loam, Clay, Sand, Rock pH: 7, 8, 9 Moisture: Medium, Dry, Well-Drained 	<ul style="list-style-type: none"> Form: Tree Habit: Evergreen Family: Oleaceae Genus: <i>Olea</i> Origin: Mediterranean Hardiness zones: 8-11 Flower: Small Fruit/Seed: Medium, Green, Purple, Black, Brown Foliage: Leaves, Green, Silver Uses: Edible, Medicinal, Ornamental, Craft, Industrial

The fame of date palm spreads throughout the Arab peninsula, and even further. Spreading out from the Middle East, date palms were carried far and wide by Muslim traders and travelers, until today they grow in every Arab country whose climate is dry enough.



Cultivation	Characteristics
<ul style="list-style-type: none"> Cultivation: Easy-To-Grow Light: Sun Soil: Mid-Fertile pH: 7 Moisture: Medium, Dry, Well-Drained 	<ul style="list-style-type: none"> Form: Palm Tree Habit: Evergreen Family: Arecaceae Genus: <i>Phoenix</i> Origin: Arab peninsula and North Africa Hardiness zones: 9-11 Flower: Medium, Brown Fruit/Seed: Medium, Brown Foliage: Leaves, Green Uses: Edible, Ornamental, Industrial

Old trees can spread out laterally using these prop roots to cover a wide area. Indian Banyan tree adds an ornamental and sculptural effect in landscaping areas,





by tying threads around a banyan tree. It honors 'Savitri', the legendary wife who rescued her husband's soul from the ruler of the departed.

Although it is native to South and East Asia, it is also plant as an ornamental tree in the tropical country all over the world. Older banyan trees are characterized by their Aerial prop roots that grow into thick woody trunks which, with age, can become indistinguishable from the main trunk.

Cultivation	Characteristics
<ul style="list-style-type: none"> Cultivation: Invasive, Naturalizing, Easy-To-Grow Light: Sun, Dappled, Part-Shade Soil: Rich pH: 6, 7, 8 Moisture: Aquatic, Bog, Wet 	<ul style="list-style-type: none"> Form: Tree Habit: Evergreen Family: Moraceae Genus: Ficus Origin: India Hardiness zones: 10-11 Flower: Small, White Fruit/Seed: Small Foliage: Leaves, Green Uses: Ornamental

Conclusion

Tree cults and their mysticism developed to allow humans to interact with the entire natural world using trees as the messengers and motivators. These trees that dominated regions have been highly admired, such as the 'Olive Tree' in the Mediterranean, 'Date Palm' in Arabic culture, 'Banyan Tree' in India, "Sakura" in Japan and so many others. These trees became a perfect mirror of us and our culture.

There are plenty of reasons to respect to trees beyond their impressive looking. Trees hold a different place in the human mind than most other

living things. Human and tree relationship has been essential since ancient ages. As human kind have understood the cultural and social value of trees which have represented with all good faith to human survival, motivation and civilization they have lived happily ever after.

Lastly, three apples fell from the sky, one for those who know to keep their inner child alive, one for those who know to listen and think before they act, and one for those who never lose the love and hope within their soul. And with that, they all achieved their hearts desires. Let us now step up and settle into their thrones.

References

- The Plant Encyclopedia, 2011. *The Global Guide To Cultivated Plants*, Aden Earh.
- Piergiorgio and Amy Nicoletti. *Olive Trees, Harvesting, and Olive Oil* (www.delallo.com/articles/olive-trees-harvesting-and-olive-oil)
- Charlotte Kuchinsky, *Exploring the Mythology Surrounding the Willow Tree*

- Blue planet biomes, *Savana Trees/Baboab Tree* (www.blueplanetbiomes.org)
- Cristy West, Program Coordinator and Editor, *Spirit of Trees* (<http://spiritoftrees.org/featured-folktales>)
- Georges Karabatos, *12 months of Olive Tree*, Cultural Organization "The Routes of the Olive Tree" - Chamber of Commerce and Industry of Messinia, Greece.
- Dr. Wafaa M. Amer, *History of Botany Part 1, 'The Date*

- *Palm in Ancient History*, Botany Department, Faculty of Science, Cairo University, Giza 12613, Egypt
- Prof. Kim D. Coder, 1996. 'Trees and Humankind: Cultural and Psychological Bindings', *Silvics/Ecology Warnell School of Forest Resources The University of Georgia*
- Paul Linde, *A History of Dates*, March/April 1978, Volume 29, Number 2, Saudi Aramco World
- Floridata, LC: Tallahassee, v7 2 August 9, 2011, Florida USA



INFRASTRUCTURE FOR SPORTING EXCELLENCE



BIN SBT SPORTS AND LEISURE LLC

PO Box 109094, Abu Dhabi, United Arab Emirates
Tel: +971 2 644 0303 Fax: +971 2 644 1123

Email: info@sabtmmk.ae

SABT INDUSTRY LLC

PO Box 53734, Dubai, United Arab Emirates
Tel: +971 4 347 2701 Fax: +971 4 347 2453

www.sabtgroup.com

Interview with Fawzi Melhem



Mr. Fawzi Melhem
General Manager, Fitco

Please give us a brief description about you and your educational background?

In July 2014, I assumed the role of General Manager at FITCO irrigation after covering the Middle East market as the regional manager for FITCO for the past four years. I received my MS (2002) in Irrigation and my BS (2001) in Agriculture from the American University of Beirut (AUB). Moreover, I lectured at AUB Irrigation design courses parallel to becoming a trustee of the same University since 2010. I established Radius Company including the Radius academy for professional irrigation training in 2010.

Can you please highlight your past experience in the GCC region?

I started my experience in the GCC back in 2005 with BASF (Polex) as their regional manager in the Middle East for the crop protection sector. Then in 2007, I moved to Rain Bird International in KSA and Bahrain before joining FITCO.

When did your company first set up business in the Region?

FITCO started in the Middle East region back in 1985 and behind that was the vision of a great man, the late Dr. Antoun Kronfli who always realised the importance of conserving the most precious resource of our region and all over the globe and which is no doubt, water. Dr. Kronfli in addition to establishing Fitco for irrigation and chemicals he had founded earlier National Plastic for piping and fittings manufacturing.

What are your company's main activities and services?

Fitco Industries is a British based company whose central operations and warehousing for the Middle East, Near East and African regions is located within the Jebel Ali "Free

Zone" port and industrial complex in the United Arab Emirates. Fitco's present marketing activities encompass more than 20 countries with an active expansion program into Europe, Asia and Africa. We currently consist of autonomous divisions including The Irrigation division whose scope of work is focused on the supply of components to the water services industry with an emphasis on landscape and agricultural irrigation products and related accessories and The Pipes and Systems division catering for the PVC/polyethylene pipe and fittings needs of the contractor in both the irrigation and construction industries.

Based on over 30 years of comprehensive experience Fitco selectively utilise the latest product technologies in order to suit the demanding needs of our harsh environment and important work force considerations. Fitco promotes a marketing philosophy of using the unique performance advantages of products within our range to enable a saving in "systems cost" through reduction of components, installation time and ongoing maintenance. The aim of the company is to secure business through intelligent design without compromising on product quality, thereby promoting and maintaining a positive business relationship with our clients.

In addition to manufacturing our own range of irrigation components Fitco Industries act as regional warehousing and marketing outlet for several USA, European and Australian irrigation and water management components manufacturers. Our aim is to provide a wide range of quality products ex-stock Fitco Jebel Ali warehouse which avails to our customers a total "Systems Package" at very competitive rates.

How has your business expanded since its inception?

Since 1985, Fitco has been a major player in the irrigation market within the GCC and the Middle East. The expansion happened due to FITCO selecting the best brands of the irrigation industry and through hiring the highest caliber of technical and sales personnel.

What are the main challenges of doing business in the current Middle East market?

The first challenge is of course the instability and the lack of security especially when it comes to countries such as Iraq, Syria, and Egypt. This is causing the business investors

around the whole region of the Middle East to be concerned and cautious when it comes to spending on business developments.

Other challenges include lack of awareness in the Middle East region about the importance of the water resource as well the price competition when it comes to irrigation products which is in many cases overriding the quality of the products.

In your opinion, what changes need to be adopted in the GCC landscaping industry to become on a par with the rest of the world?

I personally believe that the most important resource is the human one. By attracting high caliber and well skilled personnel, a major progress would be achieved instantly. Another way is by adopting the latest landscape designs which take into account the proper irrigation designs as well as the latest technologies and irrigation products innovations. I realised that in many instances landscapers of the Middle East do not have enough irrigation background which makes it difficult to the irrigation contractors to implement and install their jobs properly.

How important is it for the regional landscaping industry to adhere to International standards when completing projects?

Ultimately, it is a major step to take and an imperative goal to reach the International standards when completing projects. It is time for us in this region to keep track of the world speed. A good example is Dubai where the excellence in services and the governmental follow up and monitoring of the various projects as well as the encouragement of the different businesses has led Dubai to become one of the most recognised states globally and the Expo2020 is brilliant proof on what we can achieve if we have the will to do so.

How does your company fulfill its commitments to water conservation?

By bringing to the market the latest innovations and the most efficient water conserving products. For instance, our Baseline central control system is the world champion product when it comes to water conservation as it can save up to 70 per cent water compared to 40 per cent with the other conventional weather station based systems. Likewise our KRAIN rotors, sprayers, valves, and controllers are well known to be the top notch when it comes to water conservation.

fitco
IRRIGATION

K
RAIN®

IRRIGATION SOLUTIONS
WORLDWIDE™

BASE·LINE
IRRIGATION SOLUTIONS

What are some of the major projects that you have been involved with in the past few years?

FITCO has been involved in many of the major and most prestigious projects around the region such as Princess Noura University in KSA where FITCO installed the top VAF series filters, in (KAJD) King Abdullah Financial District where Fitco supplied and installed the Baseline Central control system, Dubai Metro project, Dubai airport, Royal Mirage Hotel, Grand Mosque Muscat, and many others.

What are your company's plans for the future including new products and developments?

FITCO is determined to continue on supplying the GCC and the Middle East in the years to come with the latest most efficient products as well as recruiting the highest caliber of irrigation professionals as well as assigning and partnering with the best local distribution networks of irrigation products.

What special memories and incidents would you like to share with landscape magazine reader?

I still recall the first sentence of the first lecture of the first irrigation course back when I was a student at AUB. And it was, 'Proper irrigation is simply knowing when to irrigate and how much to irrigate.' Irrigation systems, especially when it comes to central control need to simply answer this question in addition to other monitoring capabilities. So the more the system is simple, direct and user friendly, the more the customer will be able to use it more efficiently. I always say a customer should not be a rocket scientist in order to operate their system. This is the philosophy of FITCO in choosing the most-fit and user friendly products to offer for our region.

How do you see the future opportunities related to the landscape and irrigation business in the coming years?

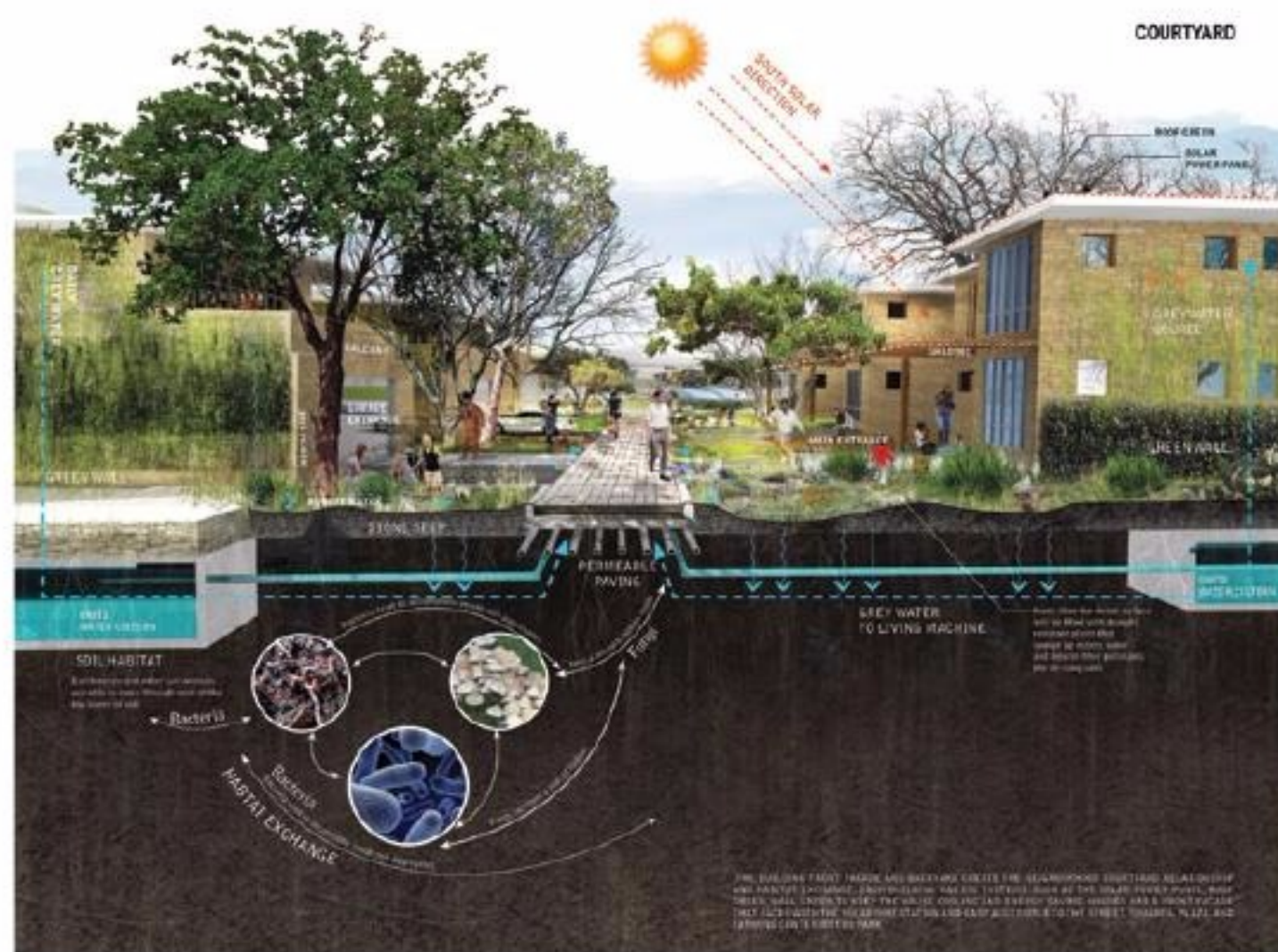
Water resource lately has become a national security worldwide. I believe that the irrigation business has no doubt a very bright future in the years to come. It might surprise many people to know that the water that any country uses on agricultural irrigation including Landscape one reaches around 70 per cent of the total water consumption of that country. Which means any major saving on irrigation will automatically have almost an equal impact on the total available water of that country.

desert farming moisturizer

Jun Zhou, ASLA, USA



Typical Key plan: One of the nine typical blocks shared with the same ecological system is developed in accordance with the community farming system to provide an affordable housing development for a micro-moisture habitat for humanity with the harmony of relationships between cultural form and practice, historical and productive landscapes, conservation and sustainable development.



Courtyard: The Building front facade and backyard create the neighborhood courtyard relationship and habitat exchange. Each building has its systems, such as the solar power panel, roof green, wall green to keep the house cooling and energy saving. Houses have a front facade that faces with the solar orientation and easy accessible to the street, squares, plaza, and farming centre weeds park.

Transition from Dry Lands to Domingo Eco-Community

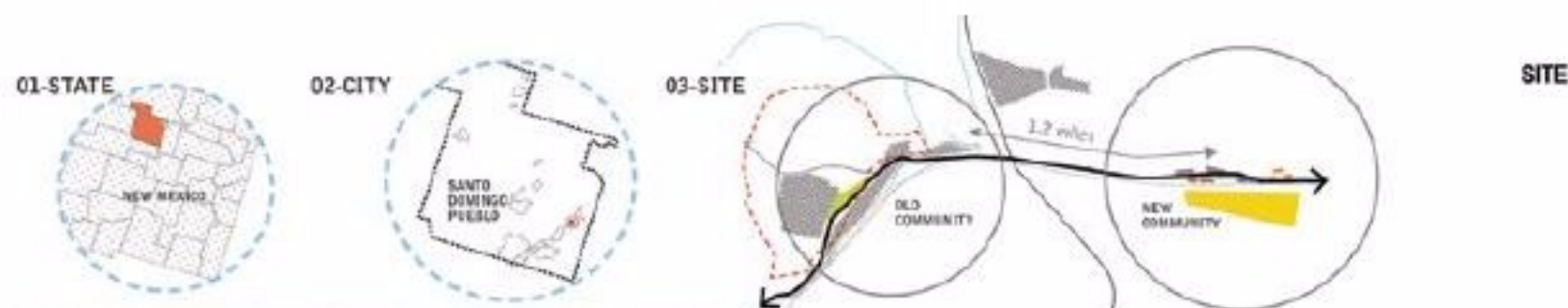
Domingo Eco-Community is a residential project located in Santo Domingo in New Mexico. The design connects a strategic approach for the establishment of a community with the organic urban farming operation, cultivating agriculture and productive landscape value to serve as a community resource and economic development opportunities in a dry land. The goal is to provide an affordable housing

development for a micro-moisture habitat for humanity with the harmony of relationships between cultural form and practice, historical and productive landscapes, conservation and sustainable development.

It is a new community design proposal which is located close to the Santo Domingo Pueblo that was established in 17 centuries in New Mexico. The Domingo Eco-Community involved the design of a new settlement with housing for 250 families in the planning

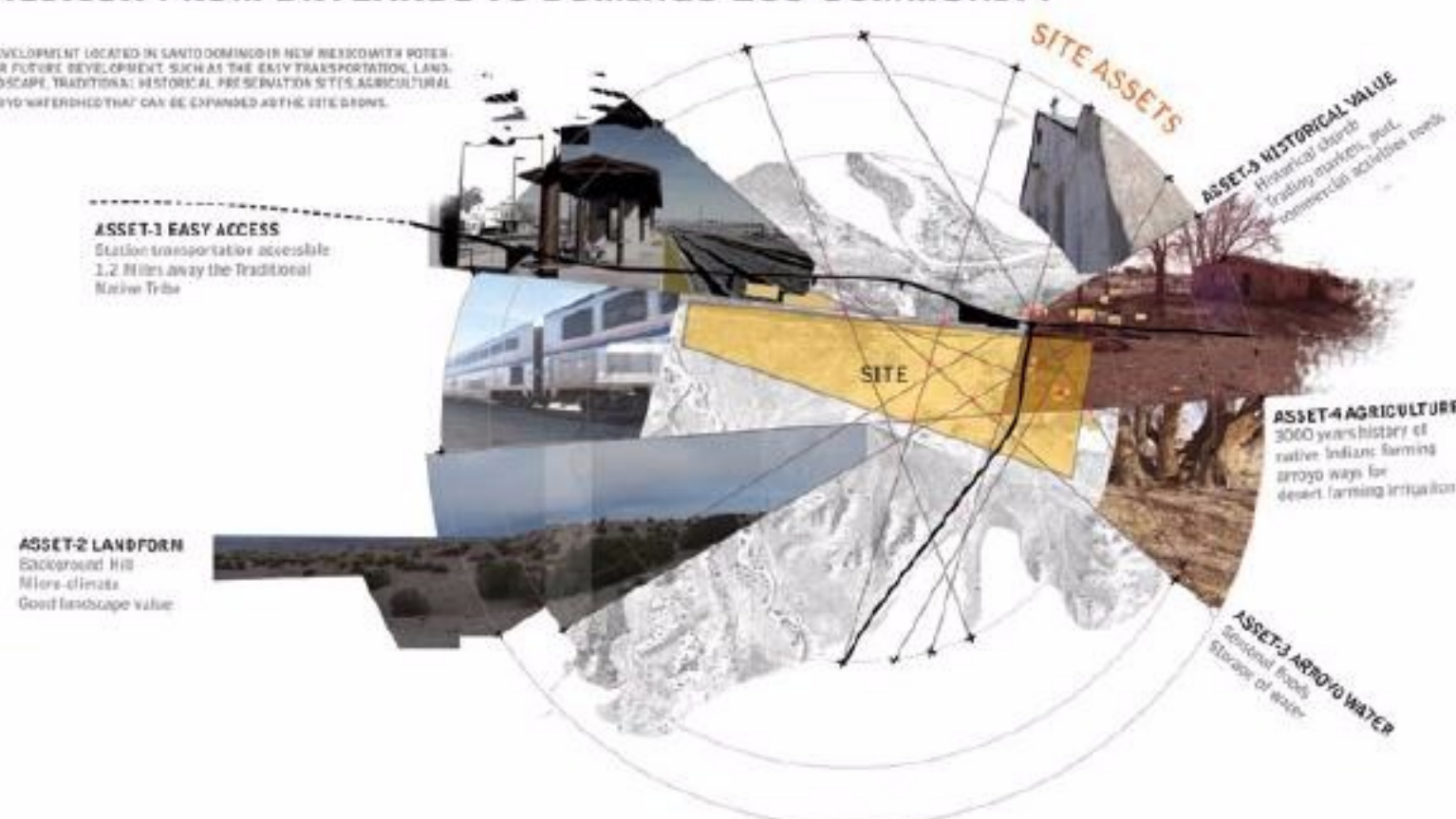


Site Aerial View: Site aerial perspective shows the community development potential process and its function of micro-moisture to make the transition from desert to a sustainable community.



DESERT FARMING MOISTURIZER TRANSITION FROM DRYLANDS TO DOMINGO ECO-COMMUNITY

THE SITE DEVELOPMENT LOCATED IN SANTO DOMINGO IN NEW MEXICO WITH POTENTIALITIES FOR FUTURE DEVELOPMENT SUCH AS THE EASY TRANSPORTATION, LANDFORM OF LANDSCAPE, TRADITIONAL, HISTORICAL PRESERVATION SITE'S AGRICULTURAL CUSTOM, ARROYO WATERSHED THAT CAN BE EXPANDED AS THE SITE GROWS.



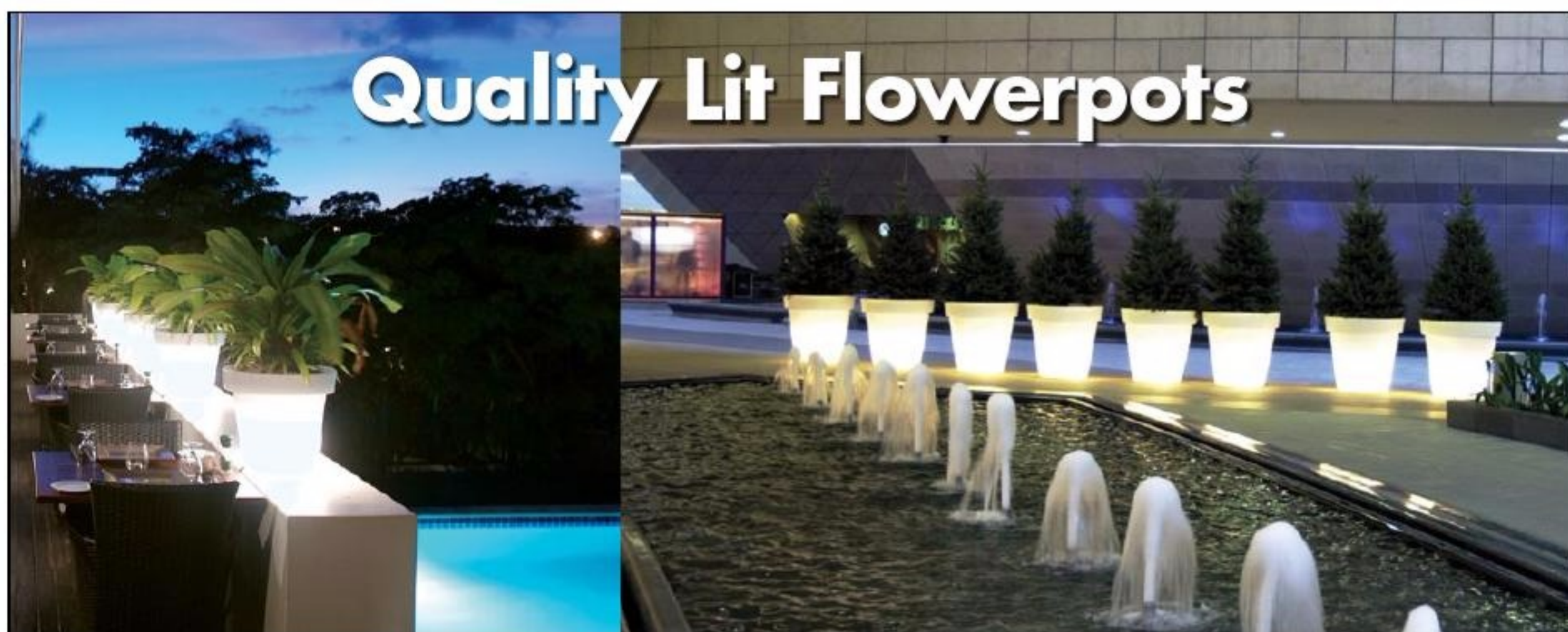
Site Context and Domingo Eco-Community Site Assets:
The site development located in Santo Domingo in New Mexico with potentialities for future development, such as the easy transportation, landform of landscape, traditional historical preservation sites, agricultural custom, arroyo watershed that can be expanded as the site grows.

phase, and applies 32 units as a typical block for the testing design.

The Eco-community will be a combination of family consumption farming and recreational community productive foods for local grocery

stores and markets. It investigates the productive and learning potential of work across disciplines, and interacts over issues such as site design, site ecology, hydrology and their relationships. The design is to propose a strategy for the establishment of a community including

the water mitigation catchment, cultivating agriculture and productive landscape value in a dry land, based on the relationships, cultural form and practice, historic and cultural landscapes, conservation and sustainable development.



Bloom! is simple but classy design: a flowerpot doubling as light. Use at homes, offices, hotels, beaches or large public spaces – both indoors and outdoors. Conforms to strict European specifications. Includes energy saving light bulbs, can be coloured.

HEIGHT	DIA TOP	WEIGHT	LIGHT	BULBS	DRAIN
40 CM	44 CM	4 KG	Yes	2 x 10 watt	No
60 CM	66 CM	10 KG	Yes	2 x 11 watt	Yes
90 CM	99 CM	24 KG	Yes	2 x 18 watt	Yes
100 CM	110 CM	28 KG	Yes	2 x 23 watt	Yes

desert river
lifestyle brands • event rentals

Desert River LLC, Tel +971 4 323 3636, Fax +971 4 323 3686
More funky products and planters available on DesertRiver.com

ENVIRONMENT

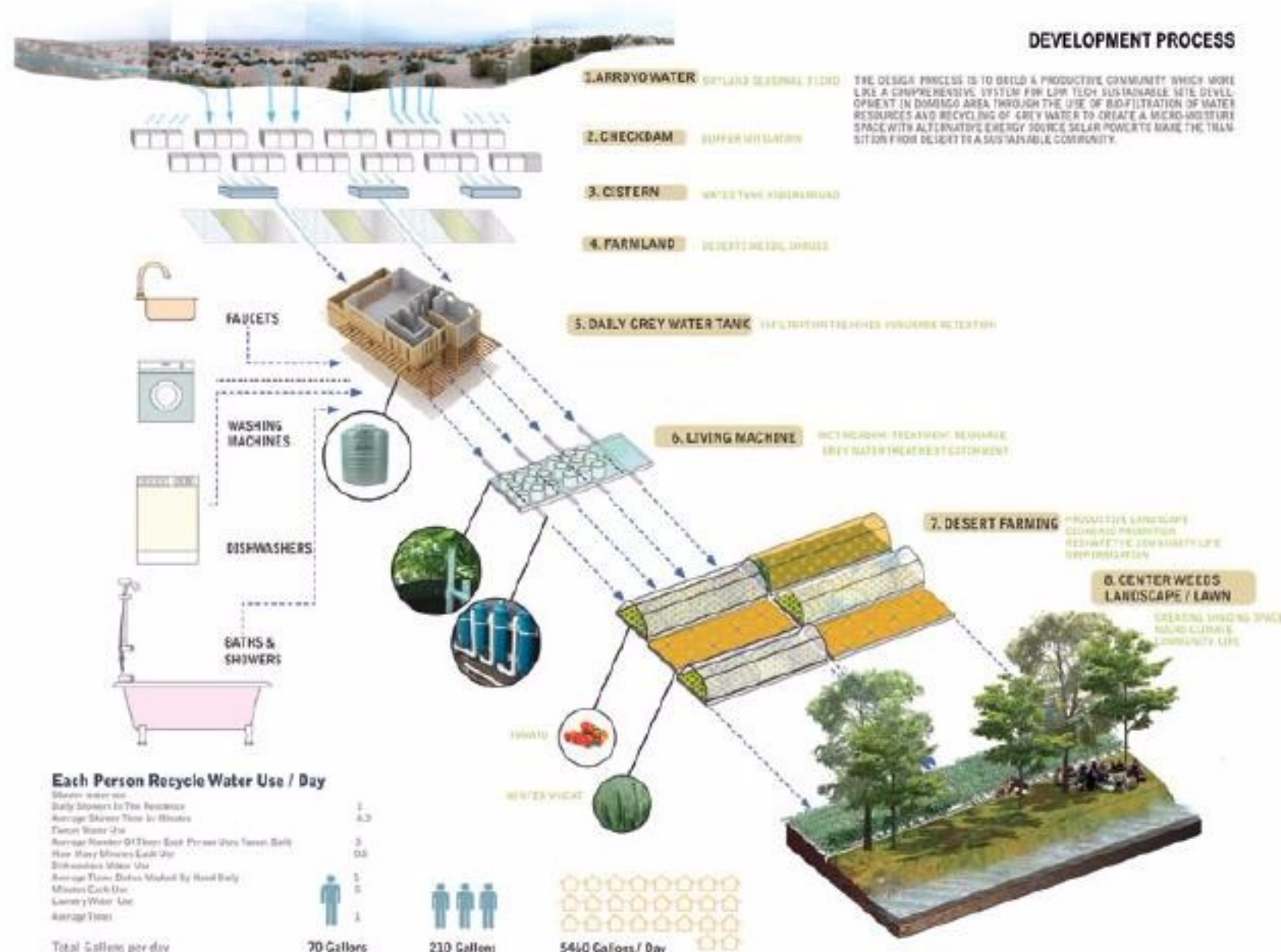
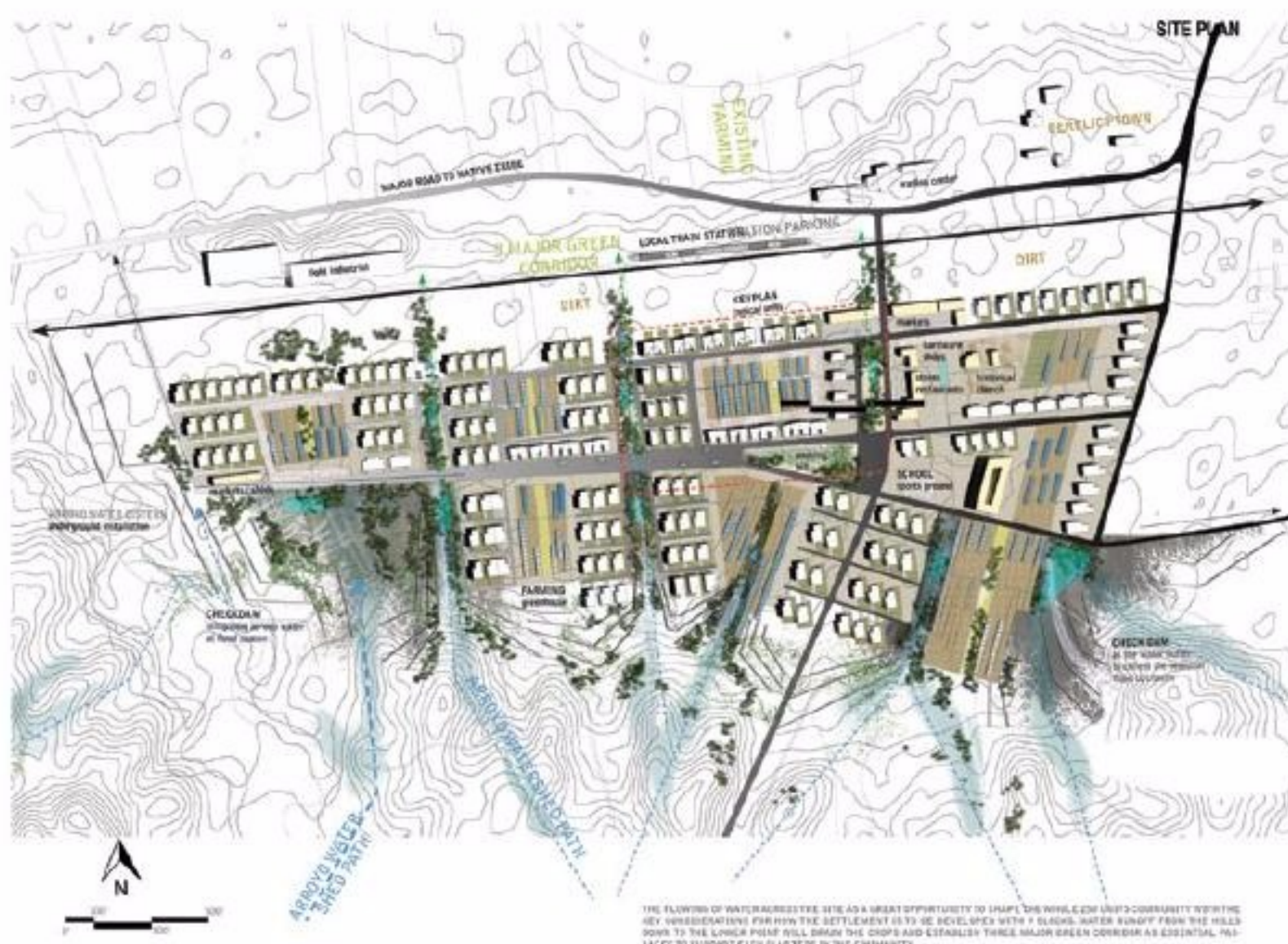
Site Plan: The flowing of water across the site is a great opportunity to shape the 250 unit community with key considerations for how the settlement is to be developed with nine blocks. Water runoff from the hills down to the lower point will drain the crops and establish three major green corridors as essential passages to support each cluster in the community.

The community site currently includes a new developed rail station. A small town was left derelict, a few old buildings and ruins of the adobe structures remain. The design goal is to build a productive community which acts like a compound system with mitigating of arroyo water and recycling of grey water to amplify ecological services delivered by community planning.

The project will bring together the community shared farming productions and recreational events. It is also important that the community will generate a systematic ecological habitat that acts as a community activities centre. It will be a space for recreational sports and playgrounds combined with the micro-moisture landscape establishment.

The site, a location in the middle of floodplain will be in danger of back arroyo water threat during the flood season. The flowing of water across the site is a great opportunity to shape the whole 250 units community with the key considerations for how the settlement is to be developed with nine blocks.

Water runoff from the hills down to the lower point will drain the crops and establish three major green corridors as essential passages to support each cluster in the community. Several water check dams will catch the heavy rain which is installed between the edges of houses and hills. There will be eight underground cisterns as the water storage destination to collect rain water through the pipes to each block. The arroyo water will be restored and mitigated through those cisterns to cater for irrigation of family farming field.



Development process: The design process is to build a productive community which is a comprehensive system for low tech sustainable site development in the Domingo area through the use of bio-filtration of water resources and recycling of grey water to create a micro-moisture space with alternative energy source solar power to make the transition from desert to a sustainable community.

"Everything has beauty, but not everyone sees it." -Confucius



BENCHES



PLAY EQUIPMENT



DESIGNER BINS



TREE GRATES



BOLLARDS



BICYCLE RACKS

 **BLUE STREAM**
Environmental Technology LLC

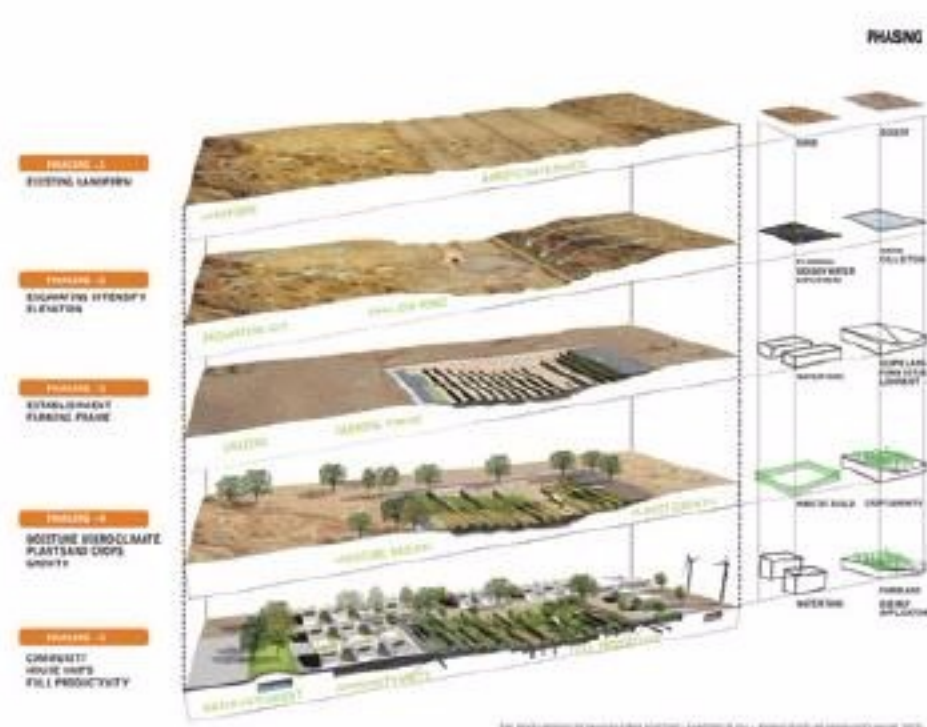
Blue Stream is the leading designer and manufacturer of street furniture and urban decor receptacles in the Middle East. Most of our designs are project specific and we work meticulously with clients to conceptualize and develop a customized range of urban decor products for their projects.

UAE: +971 552219562 | Qatar: +974 66262295 | Oman: +968 98566071 | India: +91 98 33357796

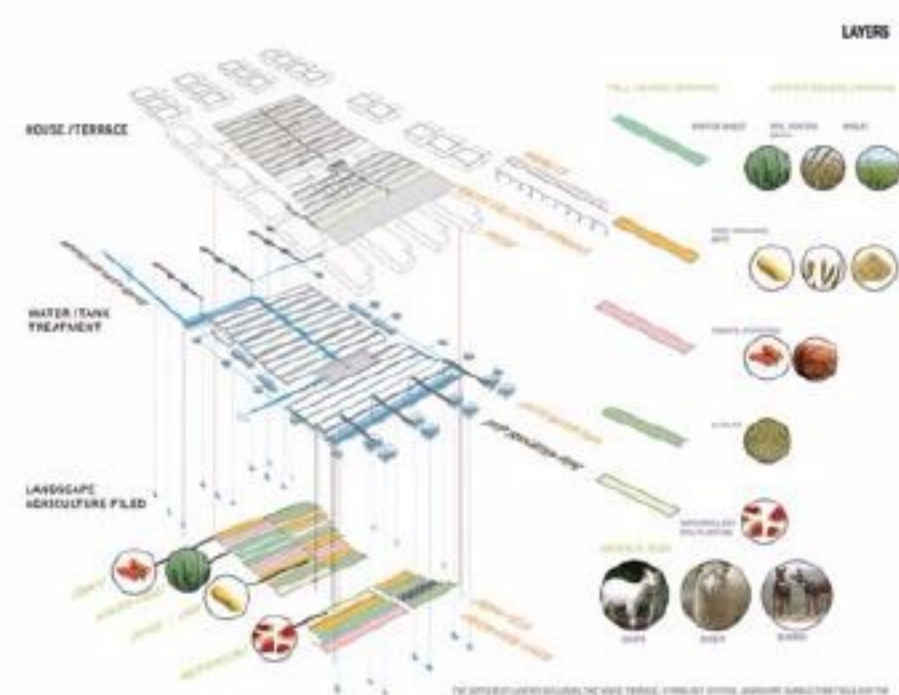
www.bluestreamme.com | sales@bluestreamme.com



Site sections:
overall site section
and center weeds
park detail section



Phasing: the
development of phasing
from existing landform
to full productivity of
community house units.



Layers: the separation
diagram to present the
different layers including
the house terrace,
hydrology system,
landscape agriculture
field and the typologies
of crops and livestock in
the community.



The project has a complex process of grey water resources that is essential for organising the eco-community. Each unit possesses a family water cistern which collects the restored water from the daily use, including the washing machine, dishwasher water, bath water and faucets water. Grey water washed and gradually purified from the storage cistern to living machine mitigation tanks will then go to the pipes supplied for farming field irrigation. Through a series of farming filed digesting water and overflow from the stone seep, which are installed as steps will finally direct water down to the centre weeds park. Based on this process, the block will eventually create a neighborhood recreational space for events and landscape value combining the micro-moisture climate and habitat exchange in a dry land.

Each agriculture tank has a major water channel and then transfers from the control dam bypass to the branch pipe. The branch pipe uses the technology of drip irrigation to keep the crops in water demand. The community farm plots will be accepted by families and will provide for family consumption as well as providing food for local restaurants and markets. The community will have a space for market selling and prepared food during market days and weekends.

The residential components are to be built in density and compactness with walkable streets. Each building has its systems, such as the solar power panel, roof green, wall green to keep the house cooling and energy saving. Houses have a front facade that faces the solar orientation and is easily accessible to the street, squares, plaza, and farming centre weeds Park. The street and network are in accordance with the farming activities and access to the public weeds park space.

Units and Farming Combination:
Units and agriculture field are
combined together to provide the
productive filed and landscape value.

THE PIONEERS IN THE IRRIGATION

PIPING SYSTEM & SOLUTIONS

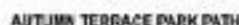


DURABILITY | CARING | PRECISION



PIPE SYSTEM FOR IRRIGATION

COMPRESSION FITTINGS FOR PE PIPES • POLYETHYLENE DRIP TUBE
LONG STAKES • HDPE VALVE BOXES / PULL BOXES • CABLES
WIRE CONNECTORS • SELF CLEANING SCREEN FILTERS
IRRIGATION WARNING TAPE • MECHANICAL WATER METERS • MICRO IRRIGATION PRODUCTS
TRAVELER IRRIGATOR • METALLIC PLANTER DRAINS • CONTROL VALVES



PERIODICALLY LINKING FORWARD FROM THE WHITE TO COLOR-BLACK PAGE



© 2004 Blackwell Publishing Ltd, *Journal of Internal Medicine* 255: 105–114



© 2004 Blackwell Publishing Ltd *Journal of Internal Medicine* 255: 103–110



For more information on our products and services, please visit our website at www.3m.com



11/11/2016 12:00:00 PM The following information is for informational purposes only. It is not intended to be used for any other purpose.

Leaders in design and manufacture of synthetic turf surfaces

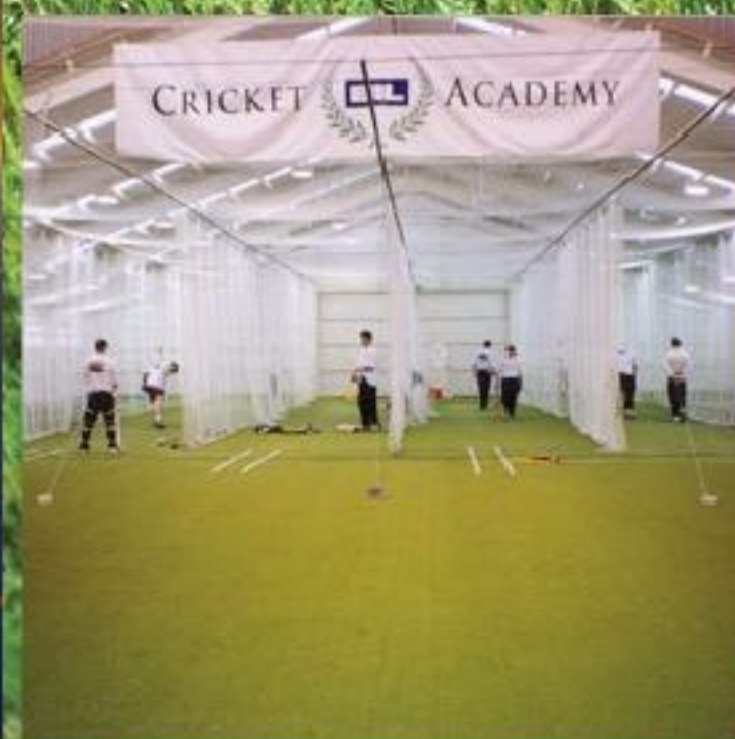


VISIT US AT THE DUBAI
WORLD TRADE CENTRE



HALL 2
STAND B63

17-20 NOV 2014



www.tigerturf.com



t: +971 4 810 3111 e: MEinfo@tigerturf.com



EVOLUTION & DEVELOPMENT



sustainable living environment

IGA - Imad Gemayel Architects

IGA is an architectural and landscape design practice based in Beirut and established in 2004. With the dynamism of an energetic, experienced and motivated young team, the firm took quick speed in getting involved in major projects in Lebanon and across the Middle East.

Carefully selected, where the design quality and environmental considerations are the main criteria, and relying on appropriate teamwork as much as on transforming work into pleasure and self-satisfaction, the projects vary from the private realm such as Basbous and Mazroui Residences and Al Maktoum Summer Palace; and semi-private domains like BankMed HQ and Sodeco

Towers, to classified National Heritage sites such as the Roman Baths, Garden of Forgiveness and Harbor Square project in Beirut Central District, and large scale public spaces like the NDC Metropolitan Park, Shoreline Walk, Mezyad Fort and Desert Park and Rachana Ecovillage.

In the short time since its establishment, IGA were able to build strong relationships with international renowned firms, which were consolidated over their projects and multiplied over the years. This is due to the ability to adapt and swiftly adopt the international norms through interacting with these firms, and through its policy of a continuous evolution and development of its approach, innovation, strategy and methodology.

The firm's interpretation of architecture and design is not limited to either exterior or interior spaces but an interaction of both, to complete a whole sustainable living environment. The team's approach is global yet detailed, wide and diverse yet focused, futuristic in expectations and aspirations yet based on the experience of the past, from urban design of agglomerations growth down to individual convivial spaces. The fluidity of the design, the purity of the spaces and the neatness of the details are complementary elements and common vocabulary of the firm's architectural and design language. The latter can be witnessed in the Disaster Prevention and Education Centre in Istanbul and Qasr Al Muwajji projects among others,

Rendered section



EVOLUTION & DEVELOPMENT



sometimes requiring a design team of over 30 different consulting firms.

In addition to its works combining different facets of the field ranging from architecture, landscape design, urban planning and sustainability, IGA counts among its team lecturers at the American University of Beirut (AUB) and the Académie Libanaise des Beaux Arts (ALBA), which maintains them in the academic loop through sharing experiences along with the latest architectural trends.

Sustainability concerns and social equity have led the firm towards setting its own environmental criteria as a condition to its involvement. For that matter, IGA has made its mission to render creativity a feel for man and nature, basing their core values on a partnership with clients respectful of community welfare and ecological preservation. The firm's futuristic vision aims at becoming a nursery for a new pattern of professional behaviour. In other terms, although creativity is the signature of each architect and designer and remains at

the core of exploring new grounds, IGA does not consider it the sole condition to deliver a substantial design.

In fact, IGA's intervention is meant to serve a purpose and respond to a need, a clear function and preferably to the largest possible number of users. Superfluous features are always replaced with essential elements that are well-designed and can only add value to the project and increase its significance. Another fundamental element for achieving a worthy design for IGA is cost efficiency. Contrary to the common fantasy of an open budget, IGA conducts its own control system to limit waste and avoid overconsumption. They believe in a better distribution of wealth and the preservation of natural resources for future generations, and cost efficiency is its way of contributing to this cause. Cost efficiency goes hand in hand with sustainability, which IGA reaches out beyond green buildings and derives its inspiration from the roots, to touch on social issues, ethical lifestyle, sustainable management and the preservation of biodiversity and so forth.

Hazmieh Hangout – Hazmieh, Lebanon

With the architectural design developed by the firms of Bernard Mallat and Walid Zeidan, IGA collaborated to provide the landscape design for the Hazmieh Hangout project, located in Beirut's suburbs.

The success of the Uruguay Street project, regrouping a cluster of restaurants and pubs around a pedestrian street showed the type of atmosphere the Lebanese enjoy and look for when they are out. A casual place where good food and music are plentiful and mostly features connecting outdoor attractive spaces and a pedestrian friendly environment. That is the essence of the Hazmieh Hangout project: a cluster of restaurants grouped around a lush inner garden with terraces communicating visually and physically via steps or ramps.

The relatively steep slope is transformed into shallow terraces with random edges at the image of the agricultural fields spreading over the Lebanese mountains. The landscape scheme follows the



Plan render

architecture whose contemporary volumes mimic a Mediterranean village cluster or a vernacular house where additional rooms are attached as the family grows. Though the space is completely open, each restaurant has its own terrace separated by a small level change allowing for more

privacy and producing a distinct identity.

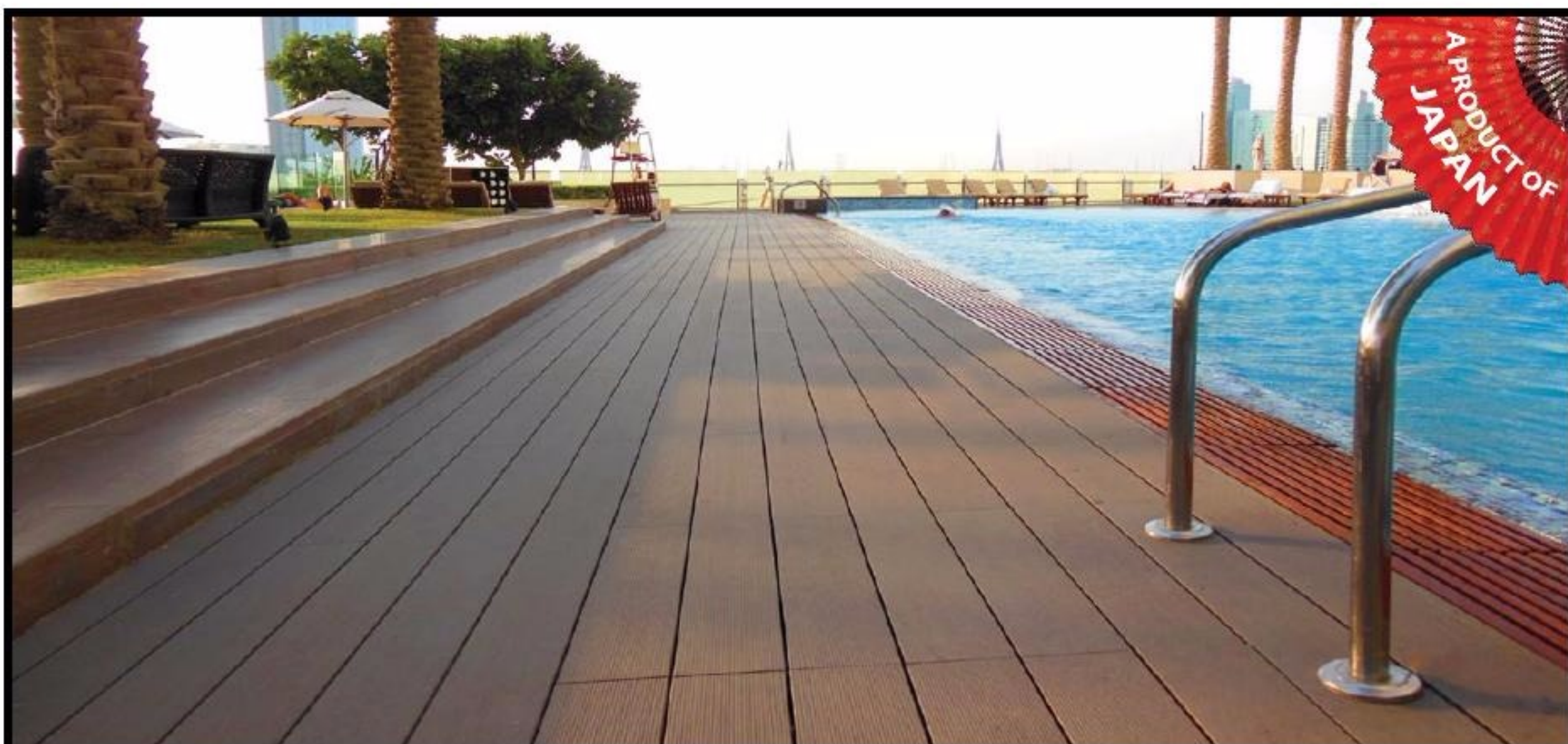
The water feature is split into gargoyles that act as a water source, channels, and a reflective pool that operates as a collection reservoir. It is designed to evoke the irrigation system in old agriculture fields,

serving at once as a cooling and animating element as well as a way of finding means connecting all the gathering and entrance nodes.

Shade is provided through a combination of evergreen and colourful trees and through tents and fabrics used in souks or on rooftops where the outdoor extension also found its way. The material selection for the terraces and passages is derived from the architectural palette, with in mind a transition from an urbanised character to a more rural one present in an adjacent lot rented for the sole purpose of maintaining green spaces around the project.

IGA Sarl

Architecture & Landscape Design
Rmeil, Qobayat Road, Street 54
Gemayel Bldg, Ashrafieh
Beirut, Lebanon
Tel: 00961 1 44 88 44
Fax: 00961 1 44 88 44 – Ext. 108
Mob: 00961 (0)3 24 19 09
Web: www.imadgemayel.com



EINWOOD

COMPOSITE DECKING

**"The real alternative
to exotic hardwoods"**

NAHAR

Wood Floors - Indoor & Outdoor

The Curve Building, Showroom 12,
Sheikh Zayed Road, Al, Quoz 3, Dubai, UAE

UAE OFFICE

Tel: 04-3408626 | Fax: 04-3408636

Website: www.nahar.ae | Email: dxh@einwood.ae



www.einwood.com



10 year's manufacture's Guarantee

WPC protects primeval forests. Our first objective was to develop the technology to create a composite wood superior to natural wood in order to combat the thoughtless lumbering of forest trees.

Introducing the award winning Biotecture green wall system – natural beauty with genuine sustainability.

Biotecture's green walls are hydroponic vertical gardens, in use across the UK, Europe, USA and now the UAE. Each installation is bespoke to the setting and client, and can be designed to suit any size or context, indoors or out, from private homes to airport terminals. An intelligent, remote management irrigation control ensures that water usage is efficient and optimal at all times.



Water-efficient, with
zoned irrigation

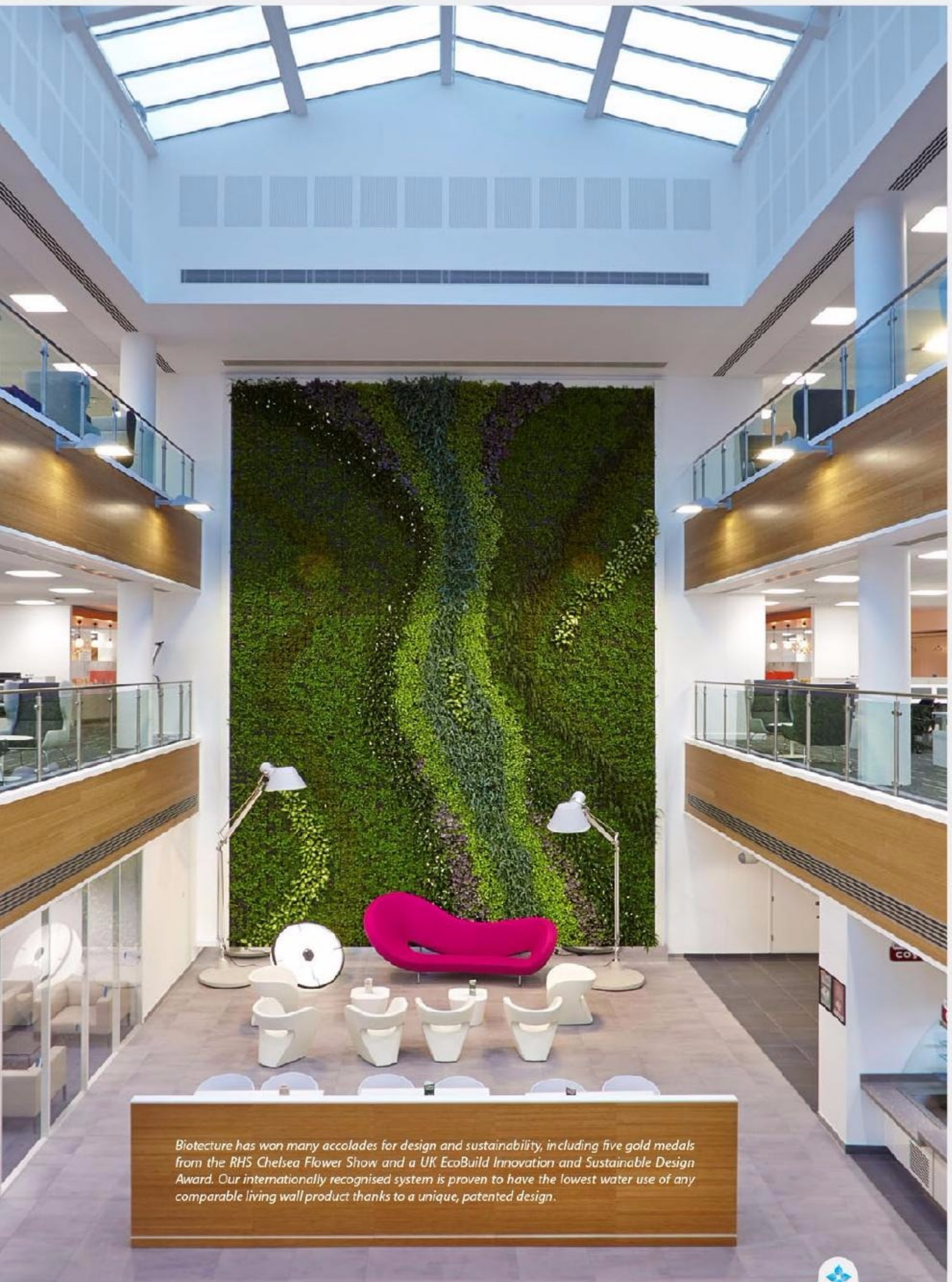
Vast range of proven
plant species and
design options

Commercially proven
growing medium

Modular panel
cladding system



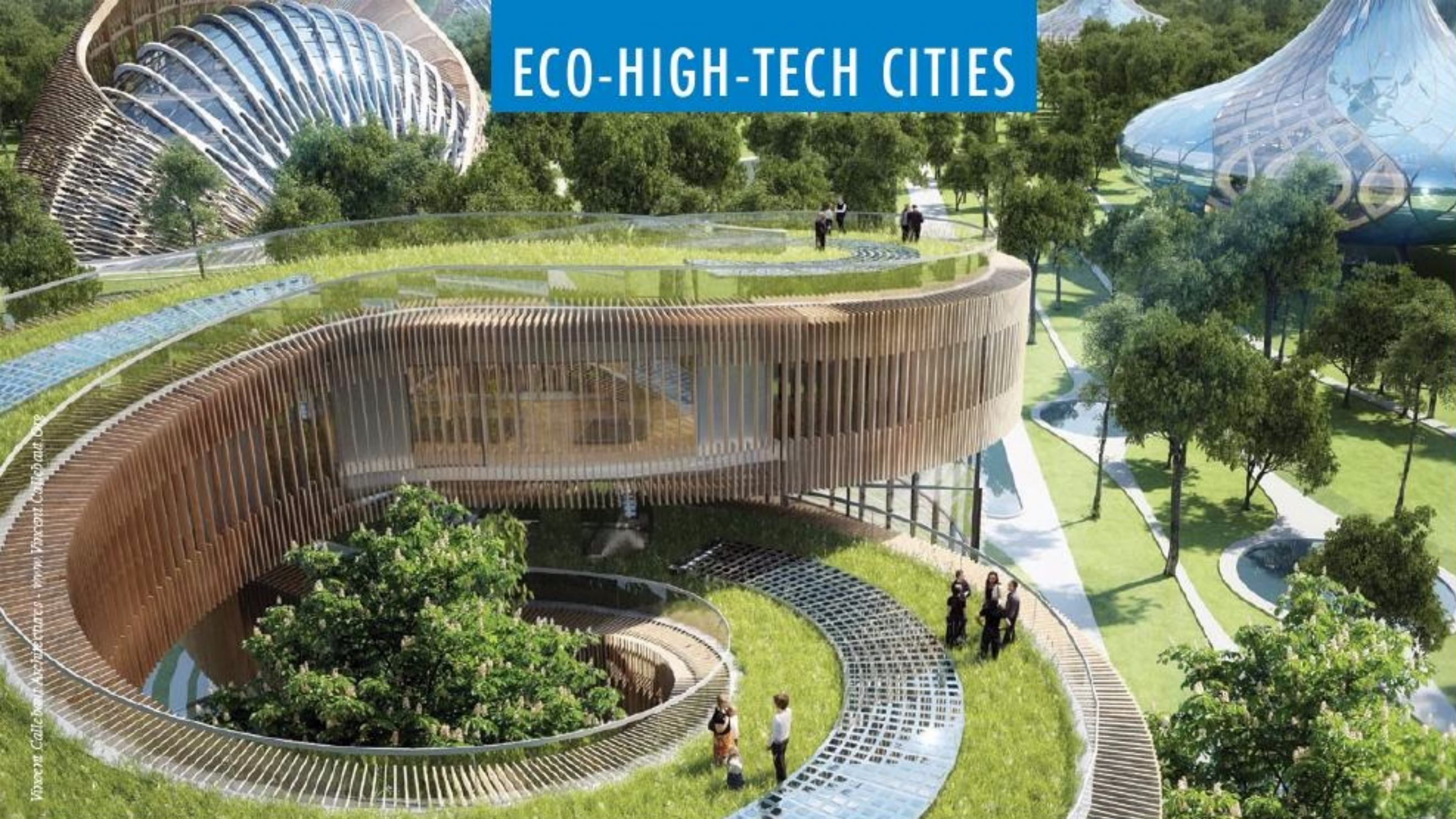
Now proven in the UAE and available throughout the GCC Countries



Biotope has won many accolades for design and sustainability, including five gold medals from the RHS Chelsea Flower Show and a UK EcoBuild Innovation and Sustainable Design Award. Our internationally recognised system is proven to have the lowest water use of any comparable living wall product thanks to a unique, patented design.



Transforming urban landscapes...



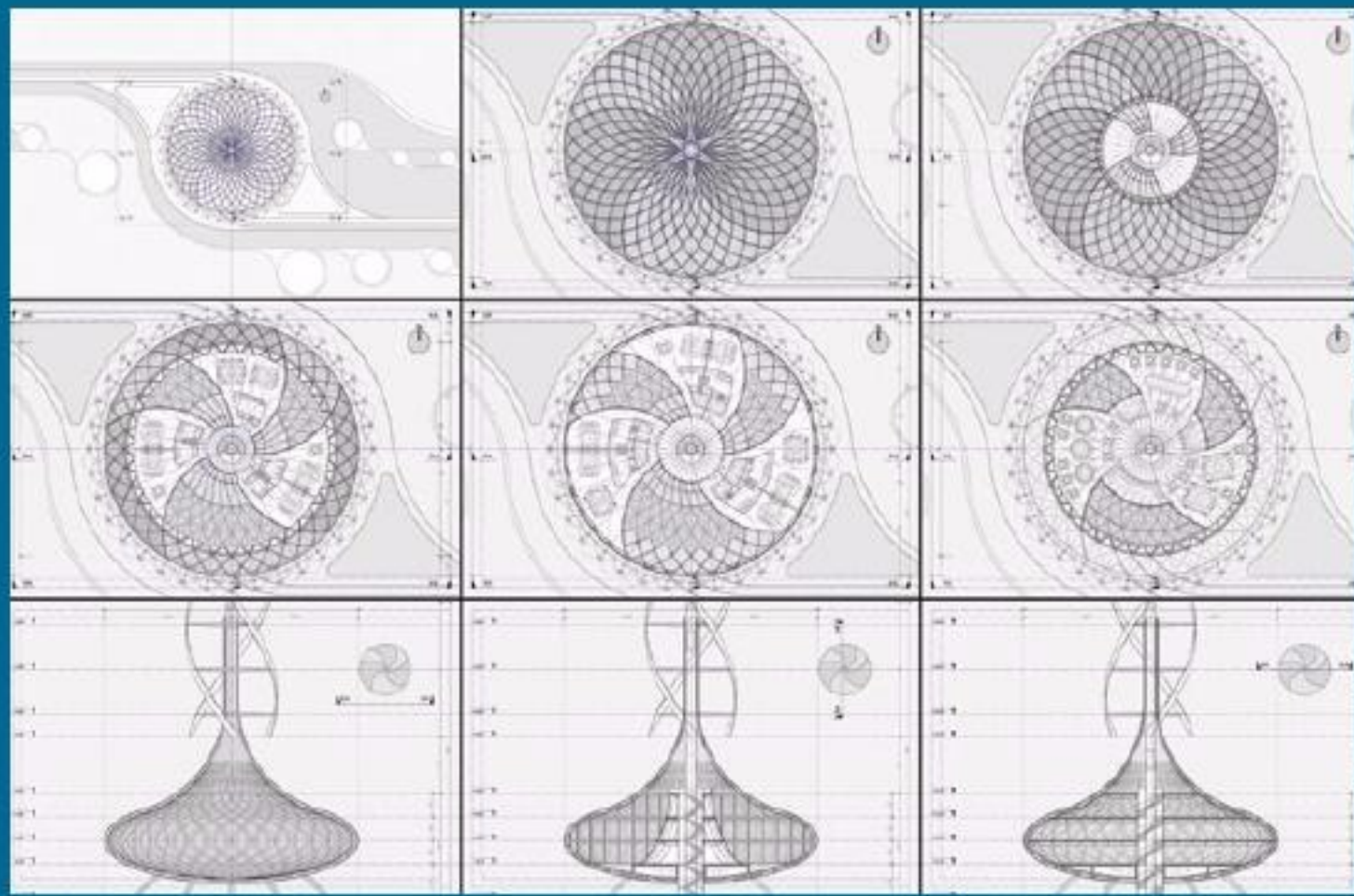
Flavours Orchard

Vincent Callebaut Architectures, Paris



CHINA'S ECO-HIGH-TECH CITIES : TOWARDS AN ENERGY EFFICIENT COMMUNITY IN KUNMING

Stepping out of your plus-energy house regulating the light and the temperature cleverly and automatically according to the sun's path. Catch the vital energies of the nature by training ourselves Tai Chi Chuan or Qi Gong under a snow of cherry tree petals. Cultivate together with our neighbours the community vegetable garden. Harvest the organic vegetables for the family dinner. Wander between the marshes of rainwater harvesting and the recycling lagoons where the sky of koi carps is covered of lotus flowers. Swim in a naturally filtered swimming-pool. Admire the elegant and nagging axial wind turbines. Listen the laughter of children of the eco-district who share with their grandparents the games of Mahjong, Go and Cuju in the wild field. Recycle our organic waste in compost wells producing natural fertiliser. Sort out the other waste via a silent and underground pneumatic collection system. Go to work by electric bicycle or driverless car (Electric Networked-Vehicle), both recharged



Vincent Callebaut Architectures - www.VincentCallebaut.Org



Vincent Callebaut Architectures - www.VincentCallebaut.Org

directly by the photovoltaic roof of the house. Follow the road whose sensory LED lights match according to sounds and movements of the city-dwellers.

This is the Eco-High-Tech atmosphere of the "Flavours Orchard" project. It's a pioneer project that fights for the conception of eco-responsible lifestyles along the Daguang River connecting the "Emerald", the green lake of the city centre of Kunming, to the magnificent Dianchi Lake in the South. Capital of the Yunnan province, the city is located at 1894

metres high and benefits from a temperate climate all the year that gives to it the charming name of The City of Eternal Spring.

The site of several hectares is an old industrial wasteland devoted to be restored in a new eco-district whose exemplarity in terms of sustainable innovations is supposed to be reproducible everywhere in China. The leitmotiv is to produce more energy and biodiversity than we consume by recycling at the same time our waste in reusable natural resources endlessly towards a post-nuclear,

post-fossil and zero carbon emission city. Through the creation of such projects, China is recovering its delay on the ecological debt reimbursement and tries to slow down the massive rural exodus it suffers by the creation of new urban prototypes mixing all the advantages of the city and the countryside.

45 PLUS-ENERGY (BEPOS) VILLAS PLANTED IN THE SMART GRID OF A COMMUNITY ORCHARD

The building sector is a primary energy consumer particularly in China (40% of total



The art of Grass

UNIQUE PROJECTS

STATE OF THE ART MANUFACTURING

IN HOUSE TESTING LAB

FOOTBALL FIELDS

RESIDENTIAL LANDSCAPING

CALL 800 GRASS
800 47277

ECO-HIGH-TECH CITIES

consumed energy) in front of the transports (30%) and the industry (30%). It is responsible for more than 40% of total emissions of CO₂.

It's obvious that the energy savings are thus the major economic and ecological challenge for this sector. Whereas the prices of the fuel and the non-renewable energy increase unavoidably, the objective is to divide by ten the consumption of this construction sector for an equivalent service within the next ten years.

In this perspective, the concept of this new Flavours Orchard eco-district is to build 45 Plus-Energy Villas in a huge community orchard/food garden integrating a Smart Grid self-managed by the gardener-inhabitants and the participants of the project.

In the heart of this nourishing landscape, the goal is to associate a state-of-the-art for smart building automation systems and information integrated in each villa (leading to cost reduction and Increased functionality) with an intelligent energy network in order to redistribute the produced excess (electric, calorific, food) towards the nearest needs so as to prevent from the loss in lines or related to the storage systems. In addition to the fuel cells, the electric vehicles are also used as buffer storage of electricity excess produced by the solar roofs assuring the daily travels of the inhabitants for free.

The objective is also to repatriate the production of the organic agriculture in the heart of the city, centre of its consumption.



This bio-geographical integration of the master plan respects the natural qualities of the site and maintains the continuity of the endemic ecosystems (trees, hedges, streams, floras and fauna are preserved). Flavours Orchard is a genuine garden sharing its energies designed and cultivated collectively.

Ideas are here more shared than the ground, the sun or the wind because it deals not only with producing what to eat, lighten and air conditions but also to meet on a common ground of ecological experimentations and collective projects. It's an urban landscape open to everybody without fence between the villas, in favour of the neighborhood relationships and the intercultural and intergenerational social links. It's an educational tool about the environment

respect thanks to its ecological master plan, its organic agriculture techniques, its smart home automation strategies and its integration of renewable energies.

The private garages for electric cars and the technical rooms for home automation are located underground. This basement distributes each villa under the central path to liberate completely the orchard dedicated only to pedestrians, cyclists or electric driverless cars.

The future families of these Plus-Energy villas will be able to live and work comfortably in their villa reinventing new eco-responsible lifestyles maximising the normal living standards.

The 45 Plus-Energy Villas produce more energy from renewable energy sources, over the course of a year, than they consume from external sources. This is achieved by using large North and South facing window areas to allow sunlight to penetrate the structure, by reducing the need for energy use from air cooling units and light bulbs with triple-glazed windows, and by the addition of heavy insulation that means the structure is already warm in the evening and therefore needs less heating.

These passive buildings (BEPAS) that capture heat during the day in order to reduce the need to generate heat over night, exceed their energy needs through renewable energy production by the integration of solar photovoltaic and solar thermal panels, geothermal heat exchangers, and combined heat and power units (CHP).

All grey water is recycled in lagoons for agricultural irrigation and toilet flushing. All





AL RYUM CONTRACTING CO.

AL RYUM GROUP OF COMPANIES

Your Vision, Our Commitment

Infrastructure & Earthworks



Civil Construction



Mechanical & Electrical



Irrigation & Landscaping



Total Solutions for all your Projects Development

Al Ryum Gen. Contracting & Trans. Est.

P.O.Box: 28427, Abu Dhabi, U.A.E • Tel.: +971 2 632 8960 • Fax: +971 2 633 0932 • E-mail: alryum@alryum.com

ARCO International Contracting Est.

P.O.Box: 28427, Abu Dhabi, U.A.E

Tel.: +971 2 632 8960 • Fax: +971 2 633 0932

E-mail: alryum@alryum.com



ISO 9001:2008
ISO 14001:2009
BS OHSAS 18001:2007

www.alryum.com

ARCO General Contracting Est.

P.O.Box: 212842, Dubai, U.A.E

Tel.: +971 4 451 0066 • Fax: +971 4 451 0077

E-mail: contact@arcocontracting.com

ECO-HIGH-TECH CITIES



waste water will be sent to bio-reactor facades (with panels filled with algae) for anaerobic digestion and the methane emitted during the digestion process will be used to produce energy and to cool the interiors.

The construction of positive energy constitutes a high technological and conceptual rupture. These villas are thermally insulated without discontinuity and without thermal bridges. They are airtight, present controlled ventilation and are also equipped with economical domestic appliances of A+++ class. They generalise the LED lighting with automatic detection of presence and needs. They have a total consumption of primary energy (heating, sanitary hot water, lighting, all appliances)

estimated at less than 50 kWh/m²/year for an average production that can reach 100 kWh/m²/year via the sun or wind. According to the usage of inhabitants, the consumption of primary energy could even decrease less than 35 kWh/m²/year.

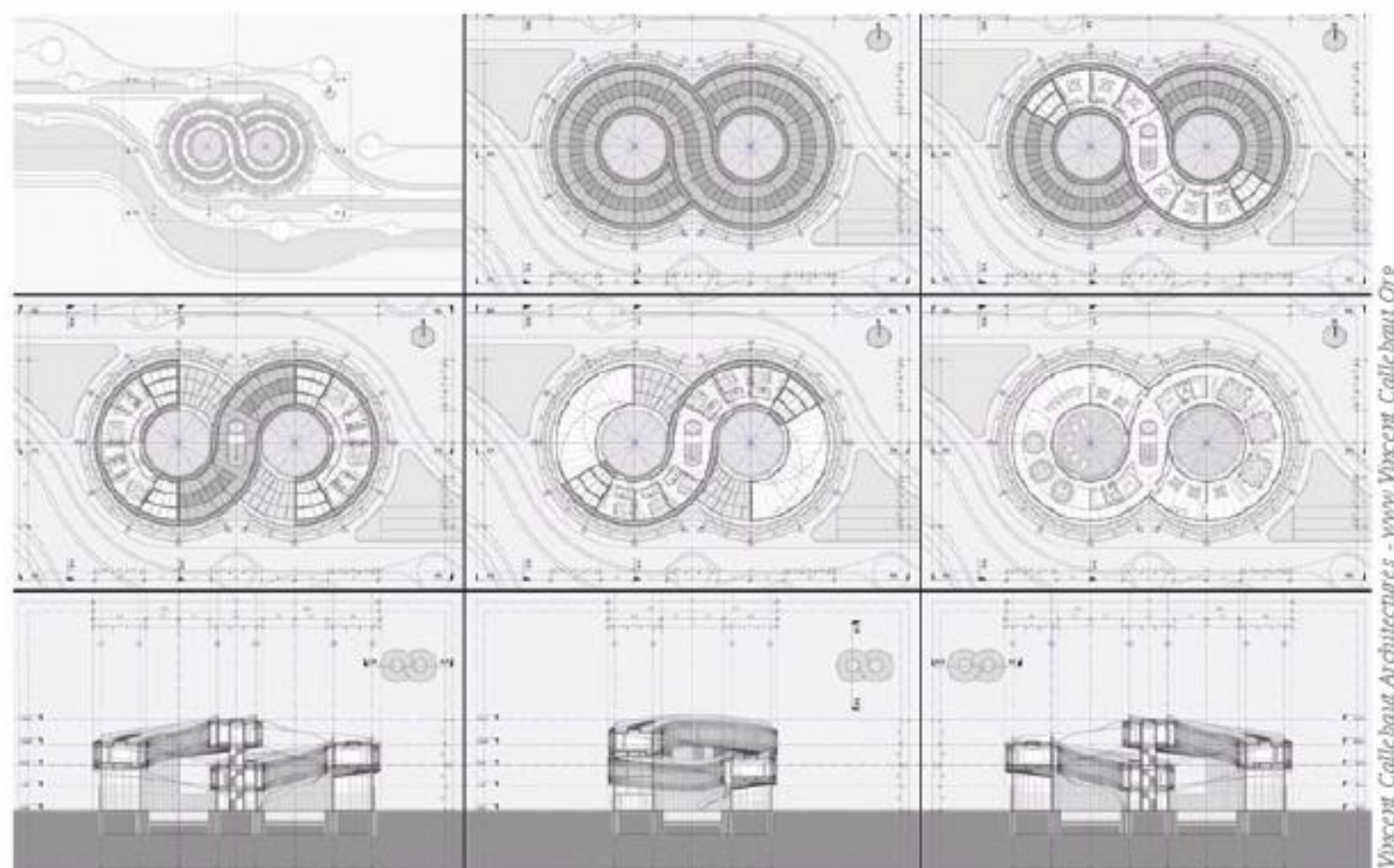
The 45 villas building with a wood/steel structure are divided into three architectural typologies forming thus three eco-districts having their own identity.

THE MOBIÜS VILLA (15 units).

The Mobius Villa is organised around an endless ribbon drawing the symbol of infinity around two patios, one aquatic and the other planted. This ribbon with primary steel structure and secondary wood frame is built from the repetition of

one trapezoidal module repeated 24 times in the space. This module, opened at 30 degrees forms thus a pedestrian sloping path of 720 degrees along its double revolution. It contains all the bedrooms, the bathrooms, the offices, the libraries and the game rooms. It is covered by a green roof, true suspended vegetable garden with high thermal inertia and with a zenithal photovoltaic glass roof. The curved geometry forms a snake in sustantation on top of a façade in "S" with supporting frames. Louvered shutters in translucent glass pivot automatically along this glass facade to regulate the solar inputs during the day.

The panoramic ground floor aims at immersing the diurnal life spaces in the heart of a clearing coiled in the orchard. The living room, the kitchens and reception rooms are located around the central vertical axis of the project. Actually at the intersection of the double loop, the vertical circulations distribute the four inhabited levels and the garden roof.





QATAR

Future Landscape & Public Realm

POWERED BY PROJECT QATAR

Register Online.
Quote **FLQM14**
and get
10% discount

Take part in Qatar's leading landscaping and outdoor design conference

Exploring the challenges and opportunities in creating sustainable and attractive outdoor environments for Qatar.

27 - 28 October, 2014

Intercontinental Hotel The City, Doha, Qatar

Supported by:



CONFERENCE ADVISORY BOARD



Geoffrey Sanderson,
Principal Landscape Architect, AECOM - seconded to President's Office, Ashghal
AECOM



Lee Allen,
Sustainability Manager, ATKINS
ATKINS



Mirna Melki Mills,
Urban Planning - Public Realm & Landscape, ARUP
ARUP

Official Supporting Partner



Supporting Partner



Gold Sponsor



Associate Sponsor



Networking Solution Providers



Official Media Partners



Partnered with:



Organised by:

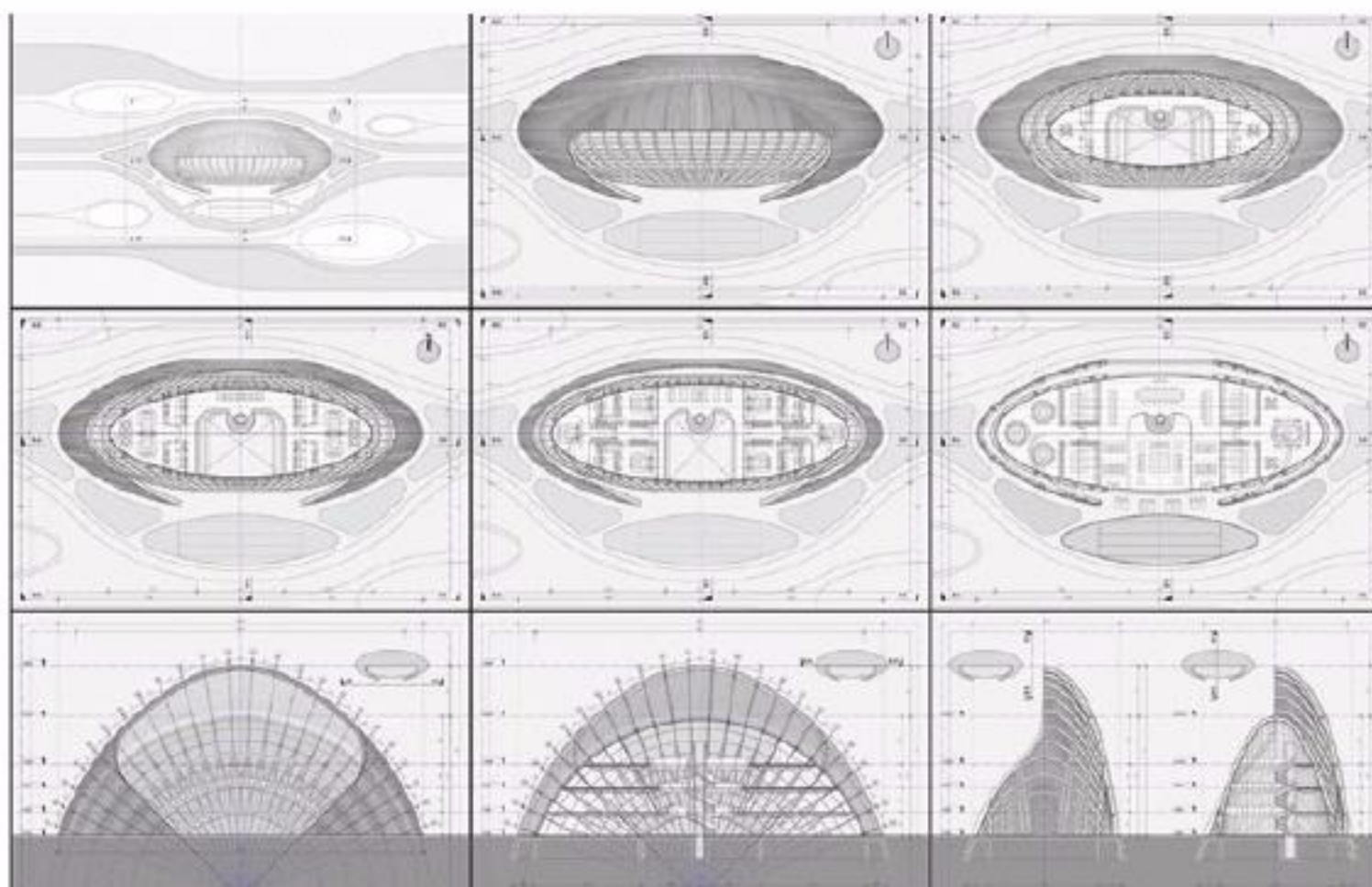


Media Partners



For more information or to register: Tel: + 971 4 361 4001 | Fax: + 971 4 361 4554
Email: opportunities@acm-events.com or visit www.futurelandscapeqatar.com
Advanced Conferences & Meetings, PO Box 478842, Dubai, UAE

ECO-HIGH-TECH CITIES



THE MOUNTAIN VILLA (15 units)

The Mountain Villa opens out at 180 degrees such as a huge Chinese fan built from east to west to ideally follow the sun's path. It's a double-skin architecture presenting a south facade very glazed and a very opaque north facade in wood presenting 20% of perforation. The 22 arches are linked together by cables. They are closed by solarised photovoltaic glass panels. Panels filled with algae are also integrated to the conception in the seven central arches to produce bio-hydrogen. The second exterior skin develops a glued laminated timber frame and works as a huge windscreen shaped in wood lace.

This trellis enables to assure the intimacy of the inhabitants and to regulate the inputs of heat by subduing the solar rays from east to west.

In the center of the villa, an atrium full of light raises on four levels. A spiral staircase coils around a panoramic glazed elevator to distribute all the night and relaxation spaces.

The living rooms and reception spaces are opened towards the landscape by a big arch going through the North and South facades.

THE SHELL VILLA (15 units)

The Shell Villa liberates itself from the ground on its six stainless steel pillars to stretch towards the sky and to make its axial wind turbine higher than the top of the fruit trees. A circular deck takes the loads of a glued laminated timber carpentry that is covered in diamonds such as a conical Chinese hat. It's a cocoon villa drawn in double curves and organised around three patios in spiral that fit closely the membranes of the twisted wood beams.

These patios are isolated by the glass façades whereas three stainless steel petals put on insulating cushions coat the structure from outside. This radiant wood structure is divided into 36 standardised beams that are spaced out from each other by 10 degrees from their centre. Thus, from the life spaces you obtain panoramic views on the whole orchard whereas an elevator goes through

all the levels to the top of the mast of the axial wind turbine.

These three typologies of Plus-Energy Villas set up in the clearings of the great community orchard are the symbol that it is possible to invent new contemporary models of eco-responsible housing mixing the economical evolution in China and the worldwide respect of the environment. The precursory inhabitants are linked together by their citizen commitment for a new ecological ideal that is energetically efficient, collective and sustainable. Through Architecture, the social life between city and countryside is first of all reinvented!

Construction of 45 plus-energy (bepos) villas in a smart grid

Kunming 2014, Yunnan Province, Southwest China

Type: architectural and engineering consultancy

Client: private developer, kunming

Program: construction of 45 plus-energy (bepos) villas

Project title: flavours orchard

Contract performance location: dianchi lake, kunming, yunnan province, southwest china

Surface area: 90.000 M2

Team: Jiaoyang Huang, Benoit Patterlini, Maguy Delrieu, Olivier Sylvain, Vincent Callebaut





LXI AVT MM4 3Rs RoHS



THINK GREEN

36V LITHIUM-ION OPE RANGE

ZERO
EMISSION

LOW
NOISE

EASY
MAINTENANCE

Explore our range of **36V Lithium-Ion OPE** (Outdoor Power Equipment)

The new improved features have made them ideal for use in resorts, public places, hospitals and residential areas.



POWERFUL

36V
LITHIUM-ION

BE SAFE
WITH MAKITA

BUC250RD
Cordless Chain Saw

BUH550RD
Cordless Hedge Trimmer

BUB360Z
Cordless Blower

BLM430RD
Cordless
Lawn Mower

BBC300LRD
Cordless
String Trimmer

BAHRAIN

M.H.AL.MAHROOS BSC (c)
P.O BOX 65, MANAMA
BAHRAIN
TEL: 00973 174 08090
FAX: 00973 174 04323
Email: almahroos@almahroos.com

K.S.A.

KHUSHEIM COMPANY FOR
INDUSTRIAL EQUIPMENT
P.O BOX 119, DAMMAM 31411
SAUDI ARABIA
TEL: 00966 3833 3574
FAX: 00966 3832 5451
Email: makita@khusheim.com

KUWAIT

ARABI COMPANY W.L.L.
MAKITA SHOWROOM,
CANADA DRY STREET
P.O BOX 4090,
SAFAT -13041, KUWAIT
TEL: 00965 24714551
FAX: 00965 24742566
Email: info@arabiccompany.net

OMAN

GULF SERVICES & INDUSTRIAL
SUPPLIES CO. L.L.C.
P.O BOX 2250, RUWI 112,
SULTANATE OF OMAN
TEL: 00968 2481 4273
FAX: 00968 2481 6146
Email: gsiscom@omantel.net.om

QATAR

NEHMEH CORPORATION
OFFICE 175, HANDASA ST.
P.O BOX 99, DOHA,
QATAR
TEL: 00974 4434 3000
FAX: 00974 4442 3378
Email: makitasales@nehmeh.com

U.A.E.

NASER AI SAYER & CO. L.L.C.
P.O BOX 1825, DUBAI, U.A.E.
TEL: 00971 4 2222471
FAX: 00971 4 2275803
Email: nasco@emirates.net.ae

MAKITA GULF FZE

P.O BOX: 17133, JEBEL ALI FREE ZONE, DUBAI, U.A.E.
Tel: 00971 4 8860804, Fax: 00971 4 8860805
www.makita.ae

COMPANY LISTINGS

LANDSCAPE CONTRACTOR

► Akar Technical Services Co. LLC

T: +971 4 2963955
F: ++971 4 2963954
info@akartech.com; fazilath@akartech.com
www.akartech.com

► Al Darmaky for Contracting & Agricultural Materials

T: +971 3 764 2802
F: +971 3 766 4890
sales@aldarmakyuae.com
info@aldarmakyuae.com
www.aldarmakyuae.com

► Al Jaber Landscape LLC

T: +971 2 5554300
T: 971 4 4250444
F: +971 2 5554370
F: +971 4 4411885
aljaber.landscape@aje.ae
www.aljaber.com

► Al Nakheel Landscapes

T: +974 44085333
F: +974 44983420
info@nakheelandscapes.com
www.nakheelandscapes.com

► Al Ryum Contracting Co. T:

+971 2 6328960
T: +971 4 4510066
F: +971 2 6330932
F: +971 4 4510077
alryum@alryum.com
www.alryum.com

► Satma International

T: +971 4 2956088 /
T: +966 1 2913562
F: +971 4 2956077 /
F: +966 1 2913564
satmaint@emirates.net.ae
www.satma.s5.com

IRRIGATION SUPPLIER

► Advanced Hydrotech

T: +971 2 6274818
F: +971 2 6274817
info@aldhafragroup.ae
www.aldhafragroup.ae

► Al Guffal Trading Est.

T: +971 4 2690005
F: +971 4 2694777
alguffal@gmail.com

Fitco Intelligent Solutions

T: +971 4 2221217
F: +971 4 2289130
fitcoind@emirates.net.ae
www.fitcoirrigation.com

► Hunter Industries

T: +001 760 591 7114
F: +001 760 591 7194
Hanna.Zaidan@hunderindustries.com
www.hunterindustries.com

► METTS Fzc

T: +971 4 4470927
F: +971 4 4470928
admin@mettsfzc.com
www.mettsfzc.com

LANDSCAPING PRODUCTS SUPPLIER

► Tanseeq LLC

T: +971 4 3617199
F: +971 4 3607966
info@tanseeqlc.com
www.tanseeqlc.com

WT Burden

T: +971 4 8860700
F: +971 4 8860701
streetfurniture@wtburden.ae
streetfurniture@wtburden.ae

SPORT'S FACILITIES / PLAYGROUND EQUIPMENTS

► Bin Sabt Sports and Leisure LLC

T: +971 2 6440303
F: +971 2 6441123
info@sabtmk.ae
www.sabtgroup.com

► Flora Engineering Services

T: 971 3 7640220
F: 971 3 7640221
yamen@flora-me.com
www.flora-me.com

OUTDOOR FURNITURE, PLANTERS & POTS

► Blue Stream Environmental Technology

T: +971 4 3393199
F: +971 4 3393194
sales@bluestreamme.ae
www@bluestreamme.ae

► Desert River General Trading

T: +971 4 3233636
F: +971 4 3233686
schroeder@desertriver.com
www.desertriver.com

► Gulf Leisure

T: +9714 3791390
enquiries@gulf-leisure.com
www.gulf-leisure.com

► Rattan House

T: +971 4 3382977
dubai@rattan-house.com
www.rattan-house.com

ARTIFICIAL GRASS SUPPLIER

► Green Vision / BTME

T: +971 4 3596243
F: +971 4 3596242
jitendra@btmedxb.ae
www.btmedxb.ae

► TigerTurf EMEA

T: +971 4 810 311
MEinfo@tigerturf.com
www.tigerturf.com

SOIL ADDITIVES

► Zeoplant LLC

T: +971 4 4473588
F: +971 4 4473587
info@zeoplant.com
www.zeoplant.com

WOOD FLOORING, DECKING SUPPLIER

► Floors & Decks

T: +971 4 3435148
F: +971 4 3435149
info@floorsndecks.com
www.floorsndecks.com

► Nahar

T: +971 4 3408626
F: +971 4 3408636
dxb@einwood.ae
www.nahar.ae

CEMENT PRODUCTS

► Transgulf Cement Products LLC

T: +971 4 8801020
T: +971 2 69797959
F: +971 4 8801021
F: 971 2 6797960
info@tgcp.ae
www.tgcp.ae

DRAINAGE SOLUTION SUPPLIER

► ACO Systems Fze

T: +971 4 8806998
F: +971 4 8806997
info@aco.ae
www.aco.ae

TREE ANCHORING

► Platipus

T: +974 3 3369344
T: +44 0 7921 876935
F: +44 1737 773395
info@platipus-anchors.ae
www.platipus-anchors.ae

ACQUATIC PLAY SOLUTIONS

► Vortex

T: +15146943868
F: +5143355413
info@vortex-intl.com
www.vortex-intl.com

OUTDOOR POWER EQUIPMENT (O.P.E. / GARDEN EQUIPMENT)

► Makita Gulf FZE

T: +971 4 8860804
F: +971 4 8860805
cs@makitagulf.ae
www.makita.ae

PLASTIC PIPES, FITTINGS & ACCESSORIES

► Hepworth

T: + 971 4 2894670
F: + 971 4 2894620
customer.service@corys.ae
www.corys.ae

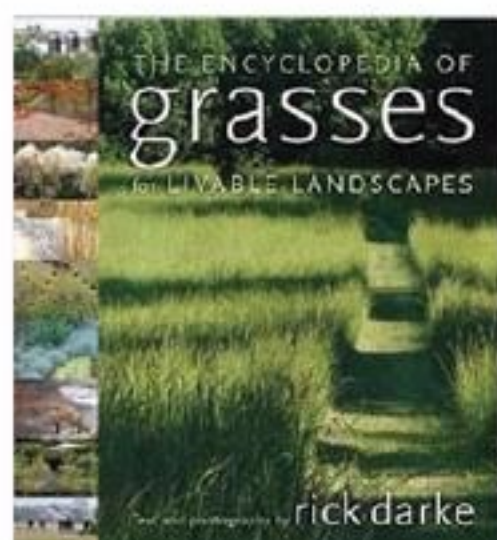
List your company in
our Listing Page that
reaches thousands of
subscribers

Book your space Now!

Contact: admin@landscape-me.com • Tel: +971 4 4470927

AED
250
per month

Books of interest



THE ENCYCLOPEDIA OF GRASSES FOR LIVABLE LANDSCAPES

Published date: April 1, 2007
ISBN: 9780881928174
Hardcover: 484 pages
Price: 258.00 AED

Books Description

In this new book noted grass expert and advocate Rick Darke addresses both the aesthetic qualities of grasses in private gardens and the opportunities

and challenges of using them in wild and constructed public landscapes. All the true grasses, sedges, rushes, restios, and cattails that possess ornamental merit or that can contribute to ecological plantings are described, and practical matters of propagation, growth, and maintenance are also covered. More than 1000 stunning photographs show details of individual plants and hundreds of gardens and landscapes in which grasses play a prominent part. This worthy successor to The Color Encyclopedia of Ornamental Grasses is a new type of design reference that sets a standard for inspired, sustainable use of grasses



LANDSCAPE ARCHITECTURE: A NEW POINT OF VIEW

Published date: November 7, 2013
ISBN: 9788415492566
Hardcover: 360 pages
Price: 350.00 AED

Books Description

This volume offers a complete collection of projects within the field of viewpoint architecture, an area that is consistently growing in importance in parallel with a growing sensitivity in society towards the spaces we inhabit. Presented here are examples of imaginative and innovative solutions applied to a wide variety of scales and contexts, illustrated with full-color photographs, notes, explanations, sketches and drawings provided by the architects themselves.



MASTERPIECES: COURTYARD ARCHITECTURE + DESIGN

Published date: August 7, 2014
ISBN: 9783037681626
Hardcover: 304 pages
Price: 260.00 AED

Books Description

Courtyards are among the most versatile elements of architectural design. With their wide range of sizes and shapes, they are integral components of every conceivable type of constructional project. Some are reserved for private use while others serve the general public.

Basically, their main function consists of structuring a building and to provide illumination and ventilation to dense spatial depths. Beyond that, they provide an defined and protected outdoor space that in itself is part of the architectural or landscape design. Based on selected case studies, this volume presents the design diversity of courtyards, focusing in particular on their expedient multifaceted use

New & Ongoing Projects

middleeasttenders.com

+971 2 634 8495

TRADE CATEGORY : AGRICULTURAL, LANDSCAPING AND IRRIGATION

Tender Name	Description	Client	Region	Tender Cost (USD)	Post Date	Closing Date
Trees Planting & Irrigation	Planting and irrigating trees for a ministry	Ministry of Agriculture (Saudi Arabia)	Saudi Arabia	533	8/26/14	10/19/14
Visitors Facilities Construction	Construction of Visitors' Facilities and Landscaping Works	Haya Water Company (Oman)	Oman	1385	8/28/14	10/9/14
Control System O&M	Operation and Maintenance of a Central Control System for Irrigation Networks	Riyadh Municipality (Saudi Arabia)	Saudi Arabia	800	8/19/14	9/24/14
Irrigation Materials	Supply of Irrigation Materials	Office of the Minister of State & Governor of Dhofar (Oman)	Oman	128	8/24/14	9/23/14
Gardens, Squares, & Walkways Construction Works	Carrying out construction of gardens, squares, and walkways for a municipality	Ministry of Municipal & Rural Affairs (Saudi Arabia)	Saudi Arabia	133	8/26/14	9/22/14
Secretariat Improvement & Beautification Works	Carrying out improvement and beautification works of the secretariat and the municipalities	Ministry of Municipal & Rural Affairs (Saudi Arabia)	Saudi Arabia	133	8/25/14	9/22/14
Parks Protection & Development Works	Carrying out protection and development of parks for a municipality	Madinah Municipality (Saudi Arabia)	Saudi Arabia	800	8/27/14	9/21/14
Garden Development & Rehabilitation	Development and rehabilitation of garden for a municipality	Madinah Municipality (Saudi Arabia)	Saudi Arabia	800	8/27/14	9/21/14
Plants Maintenance Operation Works	Operation of Plants Maintenance and general site of buildings.	Ministry of Interior (Saudi Arabia)	Saudi Arabia	1333	8/19/14	9/21/14
Irrigation Networks & Landscaping Rehabilitation Works	Carrying out rehabilitation of irrigation networks and landscaping.	Department of Municipal Affairs - Western Region Municipality (Abu Dhabi)	Abu Dhabi	275	8/19/14	9/21/14
Irrigation & Landscaping Works - Ghayathi City	Carrying out irrigation and landscaping works for pocket gardens.	Department of Municipal Affairs - Western Region Municipality (Abu Dhabi)	Abu Dhabi	275	8/19/14	9/21/14
Landscaping Services & Irrigation System Maintenance	Provision of landscaping Services and Maintenance of Irrigation System.	Ministry of Health (Oman)	Oman	66	8/13/14	9/21/14
Housing Garden Development	Development of a Housing Garden	Madinah Municipality (Saudi Arabia)	Saudi Arabia	4000	8/28/14	9/16/14
Gardens, Municipal Squares, & Walkways Construction Works	Carrying out construction of gardens, squares, and walkways for a municipality	Jazan Municipality (Saudi Arabia)	Saudi Arabia	400	8/26/14	9/16/14
Trees & Plantings Maintenance	Carrying out Maintenance techniques of modern irrigation of trees and plantings.	Madinah Municipality (Saudi Arabia)	Saudi Arabia		8/3/14	9/16/14
Beautification works	Beautification works for parks and children playgrounds	Muscat Municipality (Oman)	Oman	192	8/19/14	9/15/14
Gardens, Walkways & Squares Construction Works - Second Phase	Construction of Gardens, Walkways and Squares for a municipality - Second Phase.	Najran Municipality (Saudi Arabia)	Saudi Arabia	270	8/11/14	9/15/14
Gardens, Walkways & Squares Construction Works - Third Phase	Construction of Gardens, Walkways and Squares for a municipality - Third Phase.	Najran Municipality (Saudi Arabia)	Saudi Arabia	270	8/11/14	9/15/14
Gardens, Parks, Squares & Walkways Construction Works - Second Phase	Construction of Gardens, Parks, Squares and Walkways - Second Phase.	Najran Municipality (Saudi Arabia)	Saudi Arabia	400	8/11/14	9/15/14
Flower Seedlings	Supply of flower seedlings and trees for a municipality	Hasa Municipality (Saudi Arabia)	Saudi Arabia	1333	8/26/14	9/14/14
Irrigation System Design Consultancy	Provision of design consultancy services for the upgrading of an irrigation system.	Zoo & Aquarium Public Institution (Al Ain)	Al Ain	27	8/24/14	9/14/14
Al Wasiq Garden Construction	Construction of a Garden in Makka El Mokarama	Makkah Municipality (Saudi Arabia)	Saudi Arabia	2667	8/20/14	9/14/14
Landscaping Services & Irrigation System Maintenance	Provision of landscaping Services and Maintenance of Irrigation System.	Ministry of Health (Oman)	Oman	105	8/13/14	9/14/14
Gardens, Squares & Walkways Construction Works	Construction of Gardens, Squares and Walkways.	Hail Municipality (Saudi Arabia)	Saudi Arabia	960	8/11/14	9/14/14
Entrances Improvement & Beautification Works	Carrying out Improvement and beautification of entrances for a municipality.	Madinah Municipality (Saudi Arabia)	Saudi Arabia	1070	8/3/14	9/14/14



Tenders

www.MiddleEastTenders.com

Get the latest Tenders and Project Information in the Middle East

P.O.Box 2534 , Abu Dhabi, UAE Tel- +9712-6348495 Fax- +9712-6316465 Email: info@middleeasttenders.com

We bring nature closer to you.



- Soft Landscaping
- Hard Landscaping
- Irrigation Systems
- Swimming Pools & Ponds
- Fountains & Water Features
- Landscape Lighting
- Sports Fields
- Street Furniture
- Leisure Equipment



Akar Technical Services Co. LLC

A member of Al Ansari Group of Companies, Oman

PO Box 14652 Dubai, United Arab Emirates

Tel: +971 4 2963955 • Fax: +971 4 2963954

E-Mail: info@akartech.com • www.akartech.com

ISO9001:2008, 14001:2004, OHSAS 18001:2007



Nakheel

LANDSCAPES

With over 16 years of landscaping experience in Qatar, a total value of projects exceeding QAR 1.7 billion, Nakheel Landscapes is Qatar's leading landscape contractor within the construction industry.

The Company's activities cover the whole range of modern public realm landscaping, hard landscape, soft landscape, irrigation systems, sports turf pitches and more...



النخيل للزراعة و التجارة ذم م AlNakheel Agriculture & Trading WLL
P.O.Box 8873 Doha - Qatar Tel +974 4408 5333 Fax +974 4498 3420
info@nakheellandscapes.com www.nakheellandscapes.com



landscaping starts here