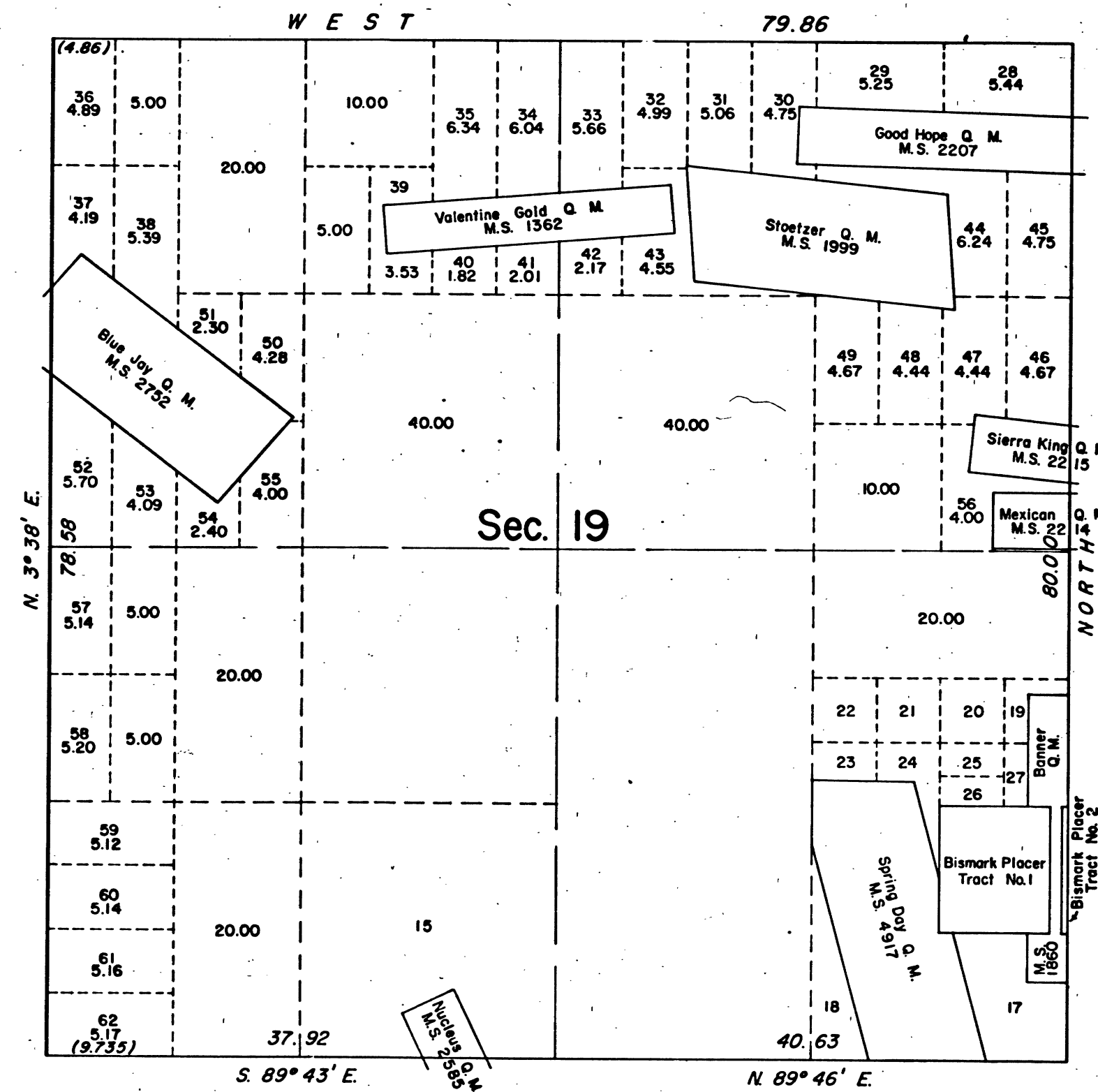


TOWNSHIP 6 NORTH, RANGE 13 EAST, OF THE MOUNT DIABLO MERIDIAN, CALIFORNIA.
SUPPLEMENTAL PLAT



This plat, showing amended lottings in Section 19, T. 6 N., R. 13 E., Mount Diablo Meridian, California, is based upon the township plats approved May 2, 1871, October 15, 1875, February 6, 1913, January 29, 1920, the plat accepted June 18, 1952, the plats dated December 10, 1881, October 9, 1882, November 15, 1883, April 11, 1884, May 11, 1885, September 2, 1887, October 11, 1888, the mineral plats approved October 9, 1882, November 15, 1883, March 17, 1884, April 7, 1884, (two plats), June 12, 1885, September 2, 1887, October 3, 1888, April 30, 1890, July 12, 1894, and September 29, 1911.

UNITED STATES DEPARTMENT OF THE INTERIOR
BUREAU OF LAND MANAGEMENT
Washington, D.C. October 26, 1960

This plat, showing amended lottings, is based upon the official records, and having been correctly prepared in accordance with the regulations, is hereby accepted.

For the Director

Donald B. Clement

Cadastral Engineering Staff Officer

CHAINS
0 20 40 60 80 100 120

41 531-H

T6 N. R. 13 E MDM

BLM 291