

# RECORD OF SURVEY NO. 34-89

1 SHEET ONLY

LOCATED IN THE UNINCORPORATED AREA OF THE COUNTY OF MONO, STATE OF CALIFORNIA, BEING A SURVEY OF LOTS 28-31 OF BLOCK 22 & LOTS 12&13 OF BLOCK 25 OF TRACT NO. 5 (CLARK TRACT), PER MAP RECORDED IN BOOK 1 PAGES 11-11A, MONO COUNTY O.R., LOCATED IN SECTION 21, T.2S., R.26E., M.D.B.&M.

## SURVEYOR'S STATEMENT:

THIS MAP CORRECTLY REPRESENTS A SURVEY MADE BY ME OR UNDER MY DIRECTION IN CONFORMANCE WITH THE REQUIREMENTS OF THE PROFESSIONAL LAND SURVEYOR'S ACT AT THE REQUEST OF KELLY ALEXANDER IN NOVEMBER, 2007.

RAYMOND WARBURTON  
L.S. NO. 8007

DATE  
4/24/12



## PURPOSE OF SURVEY:

THE REASON FOR THIS RECORD OF SURVEY IS AS SET FORTH IN THE PROFESSIONAL LAND SURVEYOR'S ACT, ARTICLE 5, 8762(b2): A MATERIAL DISCREPANCY WITH THE INFORMATION CONTAINED IN ANY SUBDIVISION MAP, OFFICIAL MAP, OR RECORD OF SURVEY PREVIOUSLY RECORDED OR FILED IN THE OFFICE OF THE COUNTY RECORDER OR THE COUNTY SURVEYING DEPARTMENT, OR ANY MAP OR SURVEYED RECORD MAINTAINED BY THE BUREAU OF LAND MANAGEMENT OF THE UNITED STATES. FOR THE PURPOSES OF THIS SUBDIVISION, A "MATERIAL DISCREPANCY" IS LIMITED TO A MATERIAL DISCREPANCY IN THE POSITION OF POINTS OR LINES, OR IN DIMENSIONS.

## RECORDER'S STATEMENT:

INSTRUMENT NO.: 2012002343  
FILED THIS 2<sup>ND</sup> DAY OF MAY 2012,  
AT 2:45 P.M. IN BOOK 5 OF RECORD OF  
SURVEY MAPS AT PAGE 15 AT THE REQUEST  
OF KELLY ALEXANDER.

LYNDA ROBERTS  
MONO COUNTY RECORDER

BY: Sherri R. Hale  
DEPUTY MONO COUNTY RECORDER

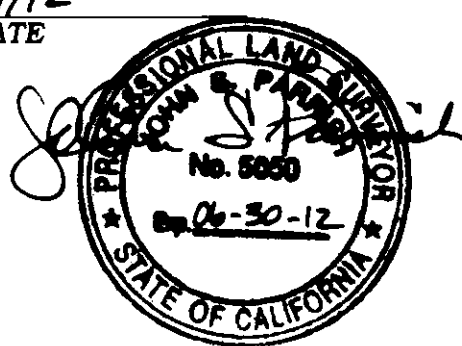
## COUNTY SURVEYOR'S STATEMENT:

THIS MAP HAS BEEN EXAMINED IN ACCORDANCE WITH SECTION 8766 OF THE PROFESSIONAL LAND SURVEYOR'S ACT THIS 1<sup>ST</sup> DAY OF MAY 2012.

COUNTY SURVEYOR

JOHN S. PARRISH  
L.S. NO. 5050

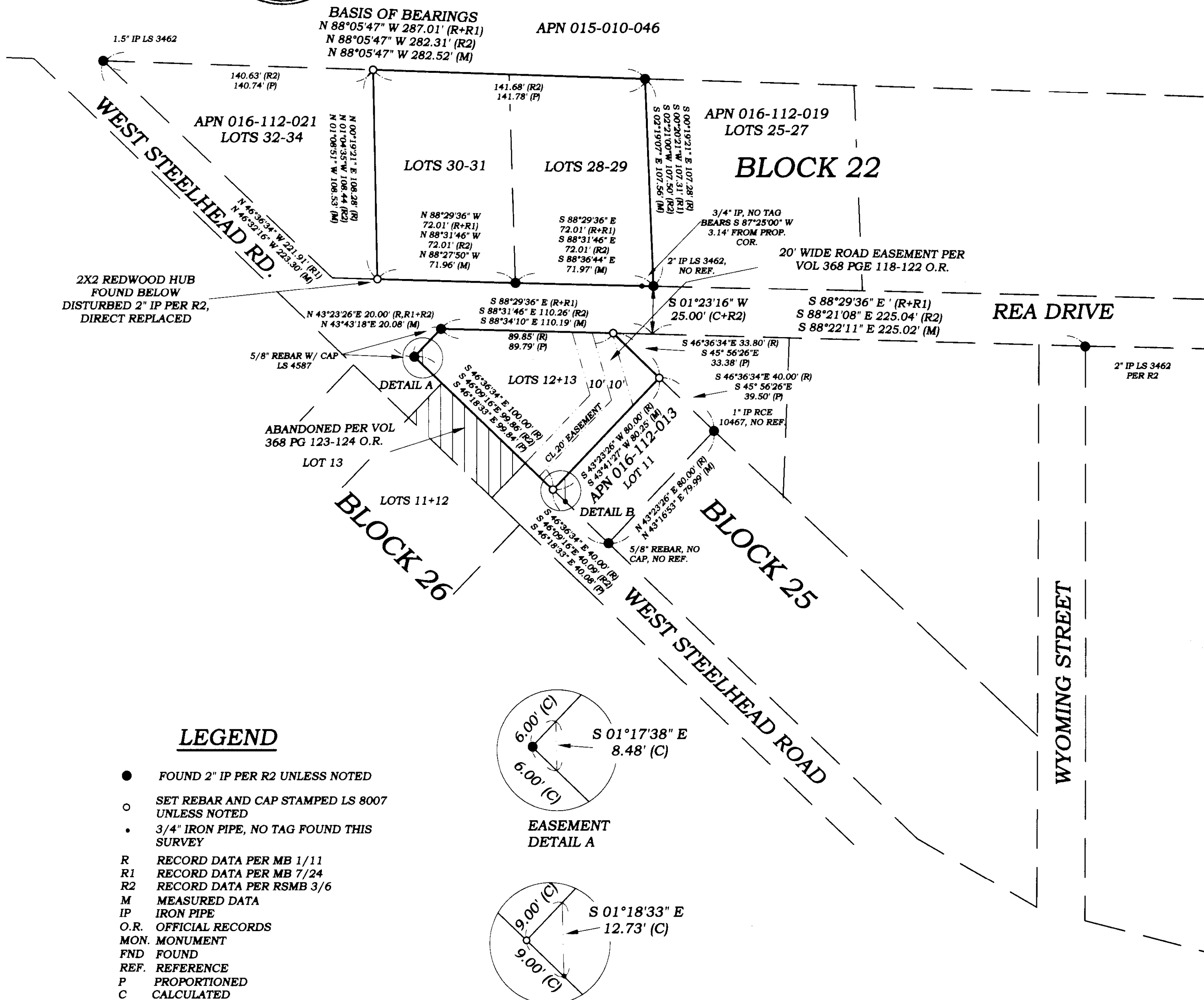
DATE  
5/1/12



GRAPHIC SCALE

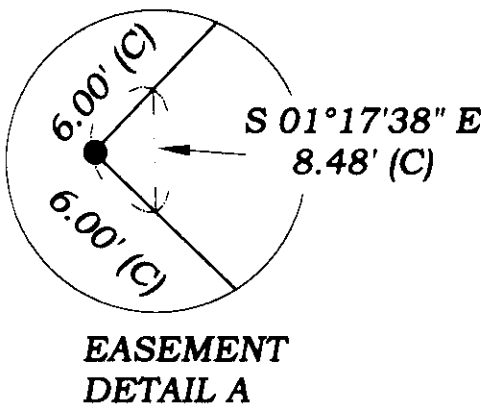


( IN FEET )  
1 inch = 40 ft.

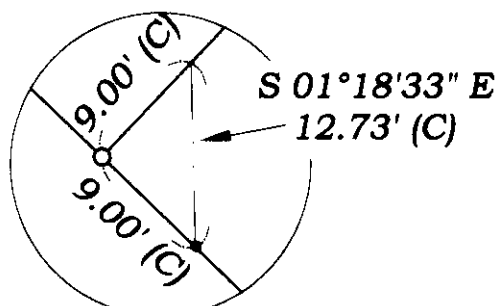


## LEGEND

- FOUND 2" IP PER R2 UNLESS NOTED
- SET REBAR AND CAP STAMPED LS 8007 UNLESS NOTED
- 3/4" IRON PIPE, NO TAG FOUND THIS SURVEY
- R RECORD DATA PER MB 1/11
- R1 RECORD DATA PER MB 7/24
- R2 RECORD DATA PER RSMB 3/6
- M MEASURED DATA
- IP IRON PIPE
- O.R. OFFICIAL RECORDS
- MON. MONUMENT
- FND FOUND
- REF. REFERENCE
- P PROPORTIONED
- C CALCULATED



EASEMENT  
DETAIL A



EASEMENT  
DETAIL B

NOTE: EASEMENTS SHOWN IN  
DETAILS A AND B ARE CALCULATED  
FROM VOLUME 368 PAGES 118-123,  
MONO COUNTY O.R.

## BASIS OF BEARINGS

THE NORTH LINE OF SILVER LAKE PINES  
TRACT NO. 5 PER MAP BOOK 1, PAGE 11,  
SHOWN HEREON AS N 88°05'47" W.