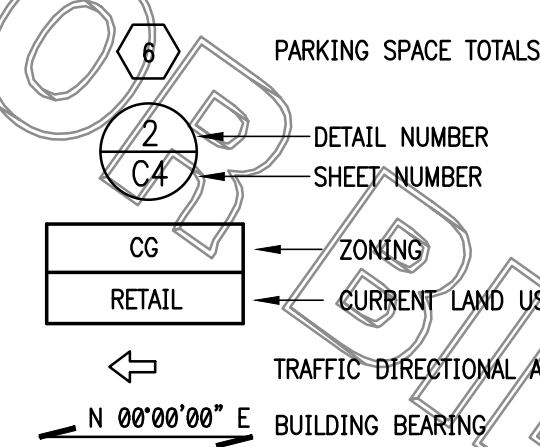


## LEGEND



## SITE DIMENSION PLAN

1" = 20'

## SITE PLAN DESIGN NOTES &amp; KEY PLAN

- |   |                                 |   |       |
|---|---------------------------------|---|-------|
| 1 | DIRECTIONAL ARROW               | 1 | C-4.0 |
| 2 | DRIVE-THRU GRAPHICS             | 2 | C-4.0 |
| 3 | STOP LINE GRAPHIC               | 3 | C-4.0 |
| 4 | PAINTED HANDICAP PARKING SYMBOL | 4 | C-4.0 |
| 5 | STANDARD PARKING STALL          | 5 | C-4.0 |
| 6 | DIRECTIONAL SIGNAGE             | 6 | C-4.0 |
- NOTES: 1. ALL SIGNS SHALL CONFORM TO THE "MANUAL ON UNIFORM TRAFFIC CONTROL DEVICES" BY THE U.S. DEPARTMENT OF TRANSPORTATION.  
2. SIGNS SHALL BE PROVIDED AND INSTALLED BY CHICK-FIL-A GENERAL CONTRACTOR.
- |     |  |     |       |
|-----|--|-----|-------|
| 6A  | STOP SIGN  | 7   | C-4.0 |
| 6B  | HANDICAPPED PARKING SIGN (2 REQUIRED)  | 8   | C-4.0 |
| 6C  | "CIRCLE BUILDING FOR DRIVE-THRU" SIGN (NOT USED)   | 8A  | C-4.0 |
| 6D  | "RIGHT-TURN ONLY" SIGN (NOT USED)  | 9   | C-4.0 |
| 6E  | "ONE WAY" WITH ARROW SIGN (NOT USED)   | 10  | C-4.0 |
| 6F  | "LEFT TURN ONLY" SIGN (NOT USED)   | 11  | C-4.0 |
| 6G  | "CAUTION - WATCH FOR PEDESTRIAN" SIGN (NOT USED)   | 12  | C-4.0 |
| 6H  | "DO NOT ENTER" SIGN  | 13  | C-4.1 |
| 7   | SIDEWALK HANDICAPPED RAMP  | 14  | C-4.1 |
| 8   | HANDICAPPED RAMP WITH FLARED SIDES (NOT USED)  | 15  | C-4.1 |
| 8A  | HANDICAPPED RAMP w/ SHORT FLARED SIDES (NOT USED)  | 16  | C-4.1 |
| 9   | RETURNED CURBED HANDICAPPED RAMP   | 17  | C-4.1 |
| 10  | TRUNCATED DOMES - CAST IN PLACE (NOT USED)   | 18  | C-4.1 |
| 11  | TYPICAL CONCRETE SIDEWALK  | 19  | C-4.1 |
| 12  | SIDEWALK WITH CURB AND GUTTER  | 19A | C-4.1 |
| 13  | DRIVE-THRU PLAN  | 19B | C-4.1 |
| 14  | DRIVE-THRU ISOMETRIC   | 20  | C-4.1 |
| 15  | SOLID YELLOW PLASTIC WHEEL STOP (NOT USED)   | 21  | C-4.2 |
| 16  | LANDSCAPE AND IRRIGATION PROTECTOR (NOT USED)  | 21A | C-4.2 |
| 17  | 24" CONCRETE CURB AND GUTTER   | 22  | C-4.2 |
| 17A | SPILLING CURB AND GUTTER   | 23  | C-4.2 |
| 17B | CATCHING CURB AND GUTTER   | 23A | C-4.2 |
| 17C | DEPRESSED SPILLING CURB AND GUTTER   | 24  | C-4.2 |
| 17D | DEPRESSED CATCHING CURB AND GUTTER   | 25  | C-4.2 |
| 18  | ROLLOVER / MOUNTABLE CURB (1 FT. WIDE) (NOT USED)  | 26  | C-4.2 |
| 19  | REFUSE ENCLOSURE FOUNDATION PLAN   | 27  | C-4.2 |
| 19A | REFUSE ENCLOSURE FOUNDATION PLAN (ALT.) (NOT USED)   | 28  | C-4.2 |
| 20  | REFUSE ENCLOSURE ALTERNATE DRAINAGE PLAN (NOT USED)  | 29  | C-4.3 |
| 21  | CONCRETE BOLLARD   | 30  | C-4.3 |
| 22  | TYPICAL PAVEMENT SECTION   | 31  | C-4.3 |
| 22A | PAVEMENT EDGE  | 32  | C-5.0 |
| 23  | TRANSVERSE AND LONGITUDINAL CONTRACTION JOINT  | 33  | C-4.3 |
| 24  | TRANSVERSE & LONGITUDINAL DOWELED CONST. JOINT   | 34  | C-4.3 |
| 24A | BUTT JOINT   | 35  | C-4.3 |
| 25  | CONCRETE APRON AT DUMPSTER ENCLOSURE   | 36  | C-4.3 |
| 26  | CONCRETE PAVING AT DRIVE-THRU LANE   | 37  | C-4.3 |
| 27  | ALUMINUM HANDRAIL  | 38  | C-4.3 |
| 28  | TYPICAL ADA RAMP AND HANDRAIL (NOT USED)   | 39  | C-4.3 |
| 29  | MULTI-LANE DIRECTIONAL GRAPHICS  | 40  | C-4.3 |
| 30  | CROSSWALK  | 41  | C-4.3 |
| 31  | DRIVE-THRU ORDER POINT ISLAND CURB   | 42  | C-4.3 |
| 32  | MENU BOARD LOOP DETECTION SYSTEM   | 43  | C-4.3 |
| 33  | MENU BOARD & CANOPY ORDERING STATION   | 44  | C-4.3 |
| 34  | GREASE INTERCEPTOR (REFER TO SHEET PS-1.0)   | 45  | C-4.3 |
| 35  | TYPICAL LIGHT POLE BASE (REFER TO SHEET ES-1.0)  | 46  | C-4.3 |
| 36  | FLAGPOLE - EXC SERIES 50 FOOT FLAG POLE PACKAGE, BY APPROVED VENDORS; THE FLAG COMPANY OR ATLAS FLAGS. | 47  | C-4.3 |
| 37  | PAD MOUNTED TRANSFORMER (REFER TO SHEET PS-1.0)  | 48  | C-4.3 |
| 38  | REFUSE/STORAGE BUILDING (REFER TO ARCHITECTURAL PLANS)   | 49  | C-4.3 |
| 39  | CHICK-FIL-A PRIME (PYLON) SIGN (20 FT. HIGH)   | 50  | C-4.3 |
| 40  | 2 FT. CHAMFER ON CONCRETE PAVEMENT   | 51  | C-4.3 |
| 41  | 4" WIDE WHITE STRIPING   | 52  | C-4.3 |
| 42  | (SEE PAINT ADDITIVE NOTE, DETAIL 5, SHEET C-4.0)   | 53  | C-4.3 |
| 43  | PAINTED DIAGONAL CHEVRON STRIPING  | 54  | C-4.3 |
| 44  | OUTDOOR SEATING (16 SEATS)   | 55  | C-4.3 |
| 45  | (REFER TO ARCH'L PLANS FOR DETAILS)  | 56  | C-4.3 |
| 46  | CASH MACHINE (ON 4" THICK 3' x 5.5' CONCRETE PAD)  |     |       |
| 47  | DRAINAGE STRUCTURE (REFER TO GRADING PLAN, SHEET No. C-3.0)  |     |       |
| 48  | "DRIVE-THRU" SIGN  |     |       |
| 49  | "DRIVE-THRU w/ RIGHT ARROW" SIGN   |     |       |
| 50  | ENTRY DOOR FROST SLAB  |     |       |



Chick-fil-A  
5200 Buffington Road  
Atlanta, Georgia 30349-2998

INTERPLAN

ARCHITECTURE  
ENGINEERING  
INTERIOR DESIGN  
PROJECT MANAGEMENT

604 COURTLAND STREET  
SUITE 100  
ORLANDO, FLORIDA 32804  
PH 407.645.5008  
FX 407.629.9124

SEAL:  
THIS DOCUMENT IS NOT FOR CONSTRUCTION  
UNLESS THE ARCHITECT OR ENGINEER'S  
SIGNATURE AND SEAL APPEAR BELOW.

STUART ANDERSON, P.E.  
GA. REG.# PEO38342

CHICK-FIL-A  
SAR Cherokee Place FSR  
115 CHEROKEE PLACE  
CARTERSVILLE, GEORGIA 30121

FSR# 00534

## REVISION SCHEDULE

| NO. | DATE     | DESCRIPTION            |
|-----|----------|------------------------|
| 1   | 01/09/18 | DIR COMMENTS           |
| 2   | 02/13/18 | GDOT COMMENTS          |
| 3   | 02/20/18 | CITY COMMENTS          |
| 4   | 03/06/18 | ELEC. UTILITY COMMENTS |

CONSULTANT PROJECT # 2017.0149

PRINTED FOR Permit

DATE 11/2017

DRAWN BY

CHECKED BY

Information contained on this drawing and in all digital files produced for above named project may not be reproduced in any manner without express written or verbal consent from authorized project representatives.

SHEET

SITE DIMENSION PLAN

SHEET NUMBER

C-2.0