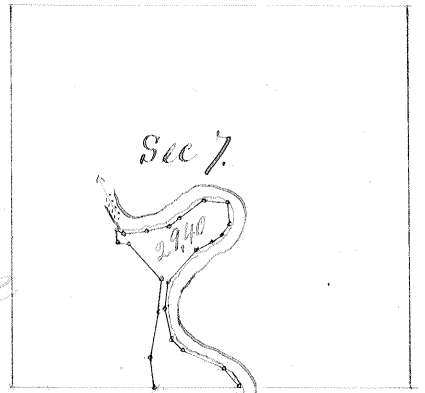


County Surveyors Office, Stanislaus County, California.
Swamp and Overflowed Lands.
Survey No 90.



Scale 1/2 mile to inch

Township 4 South
Range 3 East
Section 7, all between the United
States Meander line and the left bank
of the Tuolumne River in the East
1/2 of the West 1/2 and the South East
1/4 of Section 7.

Base and Meridian of Mount Diablo.

Containing 29.40 Acres.

Surveyed March 21st 1859 for Robert D. Smith.

Field Notes.

Beginning at Meander Post on line between Sections
7 & 18. Thence run on Section line East 17.80 ch to the left bank
of the Tuolumne River, Meander down Stream Run N 38° W 32 ch,
N 69 1/4° W 9.90 ch, N 43° W 3.30 ch, N 17 1/4° W 6.36 ch, N 6 1/4° E 5.70 ch, N 37 1/2° E 8.75 ch,
N 70 1/4° E 4.15 ch, N 58 1/4° E 3.10 ch, N 32 1/4° E 2.88 ch, N 6 1/4° W 4.57 ch, S 87 1/4°
W 4.74 ch, S 55° W 6.33 ch, S 67 1/4° W 2.64 ch, S 82° W 4.94 ch, N 89 1/4° W
4.00 ch, N 60 1/2° W 1.55 ch to 1/4 1/4 Section line. Thence run
on 1/4 1/4 Section line S 12° E 2.82 ch, to U. S. Meander line.
Thence run on U. S. Meander line S 79 1/4° E 2.92 ch, S 41° E
10.00 ch, S 2 1/4° W 7.00 ch, S 11 1/4° W 10.00 ch, S 7 1/4° E 6.00 ch to
the place of beginning.

Run by the true Meridian. Magnetic Variation
15° 45' East.

Surveyed in accordance with the Act of the Legislature
concerning Swamps and Overflowed Lands,
approved April 21st 1858 and the instruction
of the Surveyor General.

Silas Wiley

County Surveyor Stanislaus County

Approved April 6th 1859

H A Higaley

Surveyor General

Recorded April 9th 1859

Silas Wiley
County Surveyor
Stanislaus County