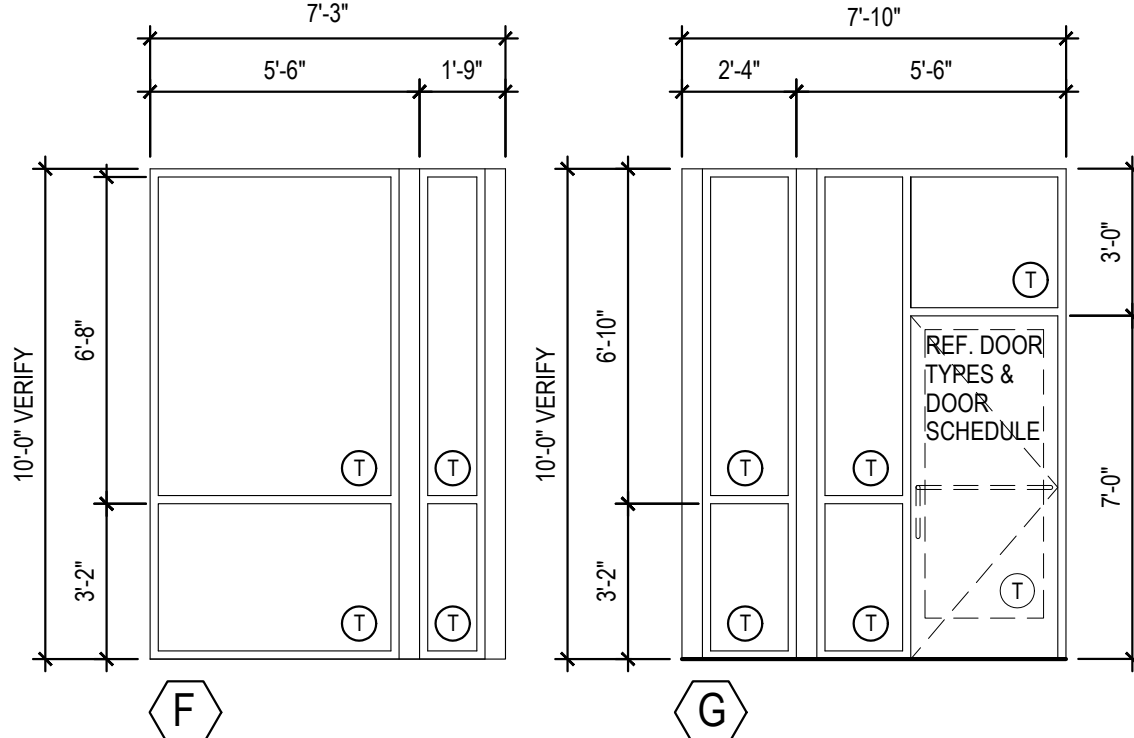
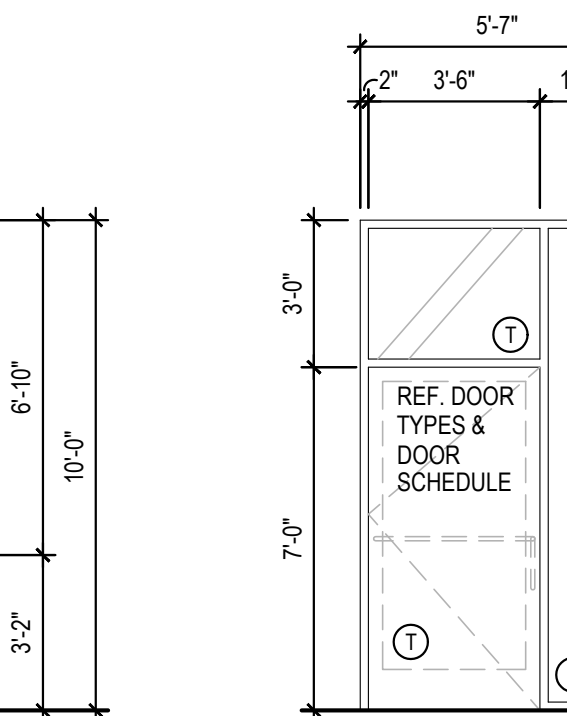
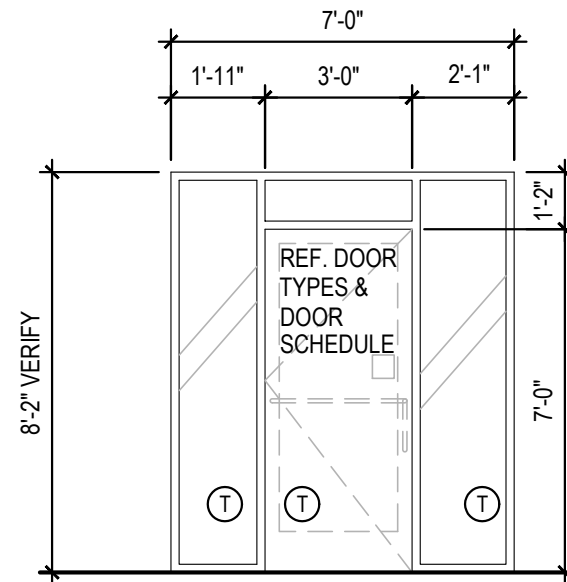


01-11-19

- NOTES
1. INSULATING GLASS VITRO ARCHITECTURAL GLAZING
SOLARBAN 60 LOW E- WINTER U=0.28 SHGC: 0.25
TRANS: 75%
2. DOORS: FULL GLAZED DOORS W/10" KICK BASE,
ANODIZED ALUM FINISH. REFER HARDWARE
SCHEDULE.
3. WINDOW DIMENSIONS ARE FOR BIDDING PURPOSES
ONLY. G.C. TO VERIFY ACTUAL WINDOW
DIMENSIONS PRIOR TO FABRICATION INSTALLATION.
4. GLASS CASE AND ENTRY DOORS TO BE
DESIGNED, DETAILED, FACTORY FABRICATED AND
SITE ASSEMBLED AND ERECTED.
5. MANUFACTURER: QUIK-SERV, MODEL SST-4606
WITH THRU-BEAM PHOTO-ELECTRIC BAR.
REGIONAL APPLICATION WITH CF-25 NON HEATED
CURTAIN OR CF-25 HEATED AIR CURTAIN. TYPE
OF AIR CURTAIN LISTED ON WINDOW SCHEDULE.
6. WINDOW SYSTEM SHALL COMPLY WITH APPLICABLE
SECTION AND CHAPTER OF BUILDING CODE.
- TEMPERED GLASS

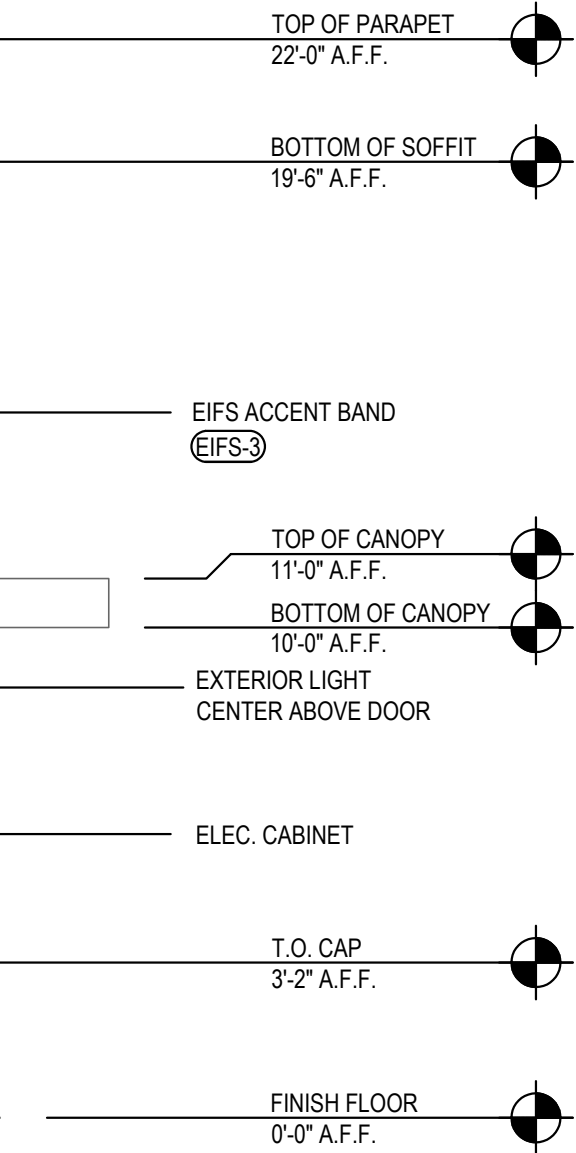
INSTALLED AND FURNISHED BY: G.C. UNLESS NOTED OTHERWISE

⑦



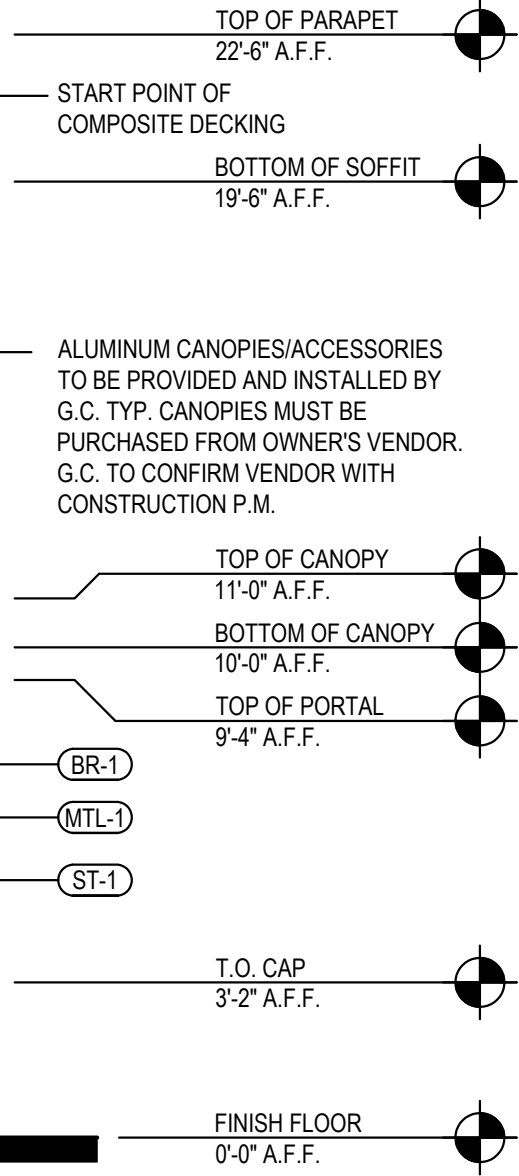
3

Scale= NTS | A-200



2

Scale= 1/4" = 1'-0" **A-200**



1

Scale= 1/4" = 1'-0" | A-200

