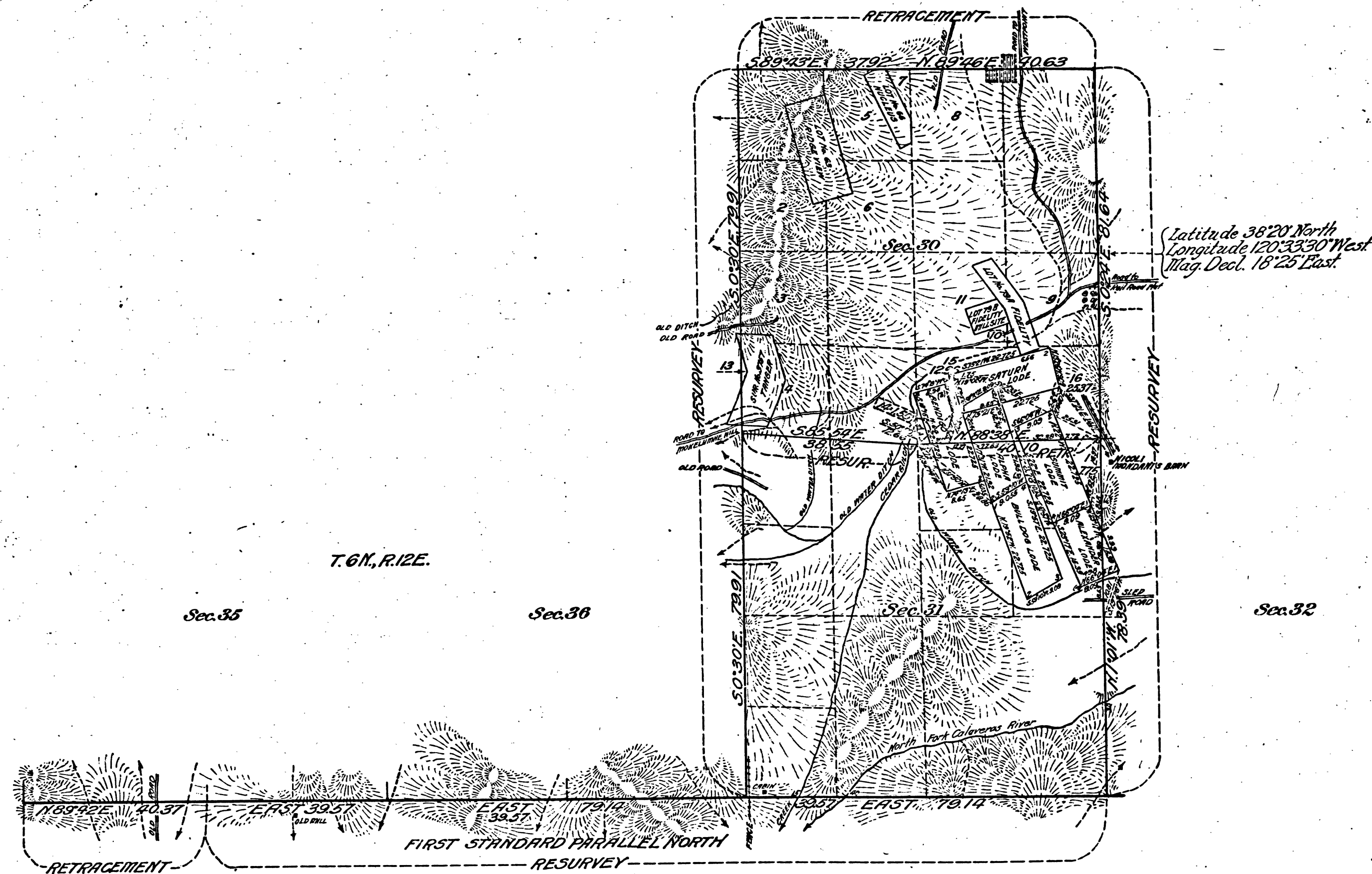


Survey accepted, G.L.O., March 8, 1920.

2

Map
showing the segregation of the
Saturn, Alpha, Bull Dog, Bendigo, Summit and Alexander Lodes
from Secs. 30 and 31, T. 6 N., R. 13 E., M. D. M.
California.
Scale 1 inch = 20 chains.



The above map, showing the segregation of the Saturn, Alpha, Bull Dog, Bendigo, Summit and Alexander Lodes, unsurveyed, from Lot 12 and S.W. $\frac{1}{4}$ of S.E. $\frac{1}{4}$ Sec. 30 (shown on plat approved Sept. 20, 1900) and from the N.E. $\frac{1}{4}$ of N.E. $\frac{1}{4}$ Sec. 31 (shown on plat approved on May 2, 1871) T. 6 N., R. 13 E., M. D. M., as surveyed by Guy Redwine, U. S. Cadastral Engineer, June 5 to June 28, 1919, under Special Instructions dated May 1, 1918, Group No. 57, to accommodate H. E. No. 04150, of Nicoli Mondani, is strictly conformable to the field notes of the survey thereof on file in this office, which have been examined and approved.

Surveys Designated	Amount of Surveys	mts.	chs.	lks.
First St. Par. N., res. and retr.	2	78	22	
Subdivisions, res. and retr.	5	77	05	
Edrs. of Mining Claims	4	29	84	
Connections	1	37	89	

U. S. Surveyor General's Office,
 San Francisco, California,
 January 29, 1920.

Wm. S. Moore
 U. S. Surveyor General for California.

11

Orig. C.F.E.
 Comp. F.E.B.