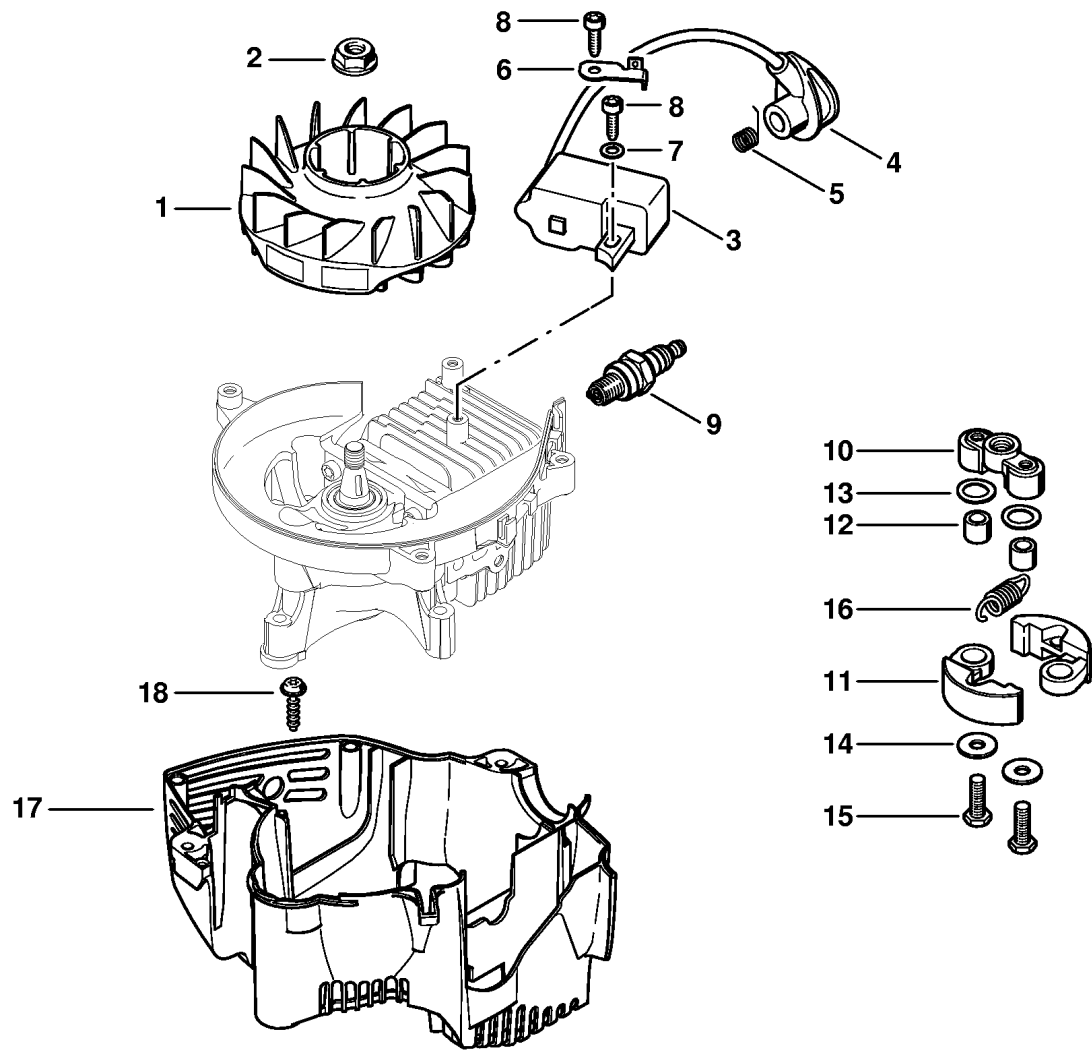


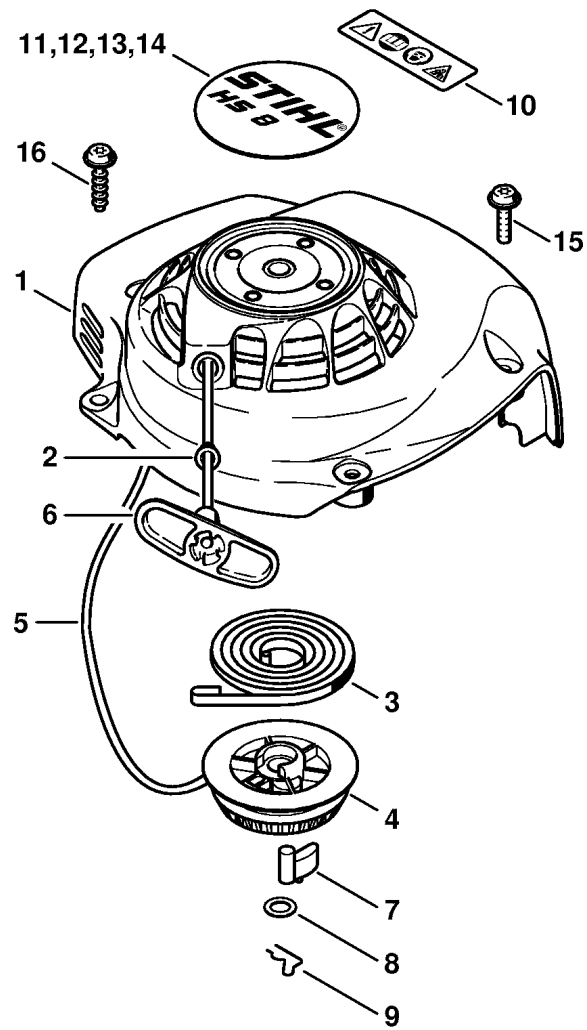
Reference	Item number	Qty	Description
1	4237 020 2900	1	Crankcase □ 2, 3
2	0000 988 8600	2	Sleeve
3	9503 003 0214	1	Grooved ball bearing 6001
4	4237 020 2600	1	Crankcase □ 3
5	9640 003 1195	2	Oil seal 12x22x5
6	4237 030 0400	1	Crankshaft (25.2005)
7	9075 478 4159	3	Pan head self-tapping screw IS-D5x24
8	4237 029 2300	1	Cylinder gasket
9	4237 020 1201	1	Cylinder with piston Ø 34 mm □ 10 - 14
10	4237 030 2002	1	Piston Ø 34 mm □ 11 - 13
11	4137 034 3000	2	Piston ring Ø 34x1.5 mm
12	4137 034 1500	1	Piston pin 8x5x22
13	9463 650 0805	1	Snap ring 8x0.7
14	9075 478 4159	4	Pan head self-tapping screw IS-D5x24
15	9512 003 1830	1	Needle cage 8x11x10
16	4140 149 0602	1	Muffler gasket
17	4237 140 0600	1	Muffler (1,3,5,7,9,10)
18	4237 140 0601	1	Muffler (2,4,6,8,11) □ 19
19	4229 140 6903	1	Stub with screen (2,4,6,8,11)
20	9075 478 4159	2	Pan head self-tapping screw IS-D5x24
21	4237 140 3400	1	Exhaust pipe
22	9075 478 3018	2	Pan head self-tapping screw IS-D4x18
23	0783 830 2000	1	Tube of sealant Dirko HT red (B)
	4237 007 1000	1	Set of gaskets (B) □ 5, 8, 16

(1) HS 81 R, (2) HS 81 R-Z, (3) HS 81 T, (4) HS 81 T-Z, (5) HS 86 R, (6) HS 86 R-Z, (7) HS 86 T, (8) HS 86 T-Z, (9) HS 81 RC-E, (10) HS 81 TC-E, (11) HS 81 TC-E Z



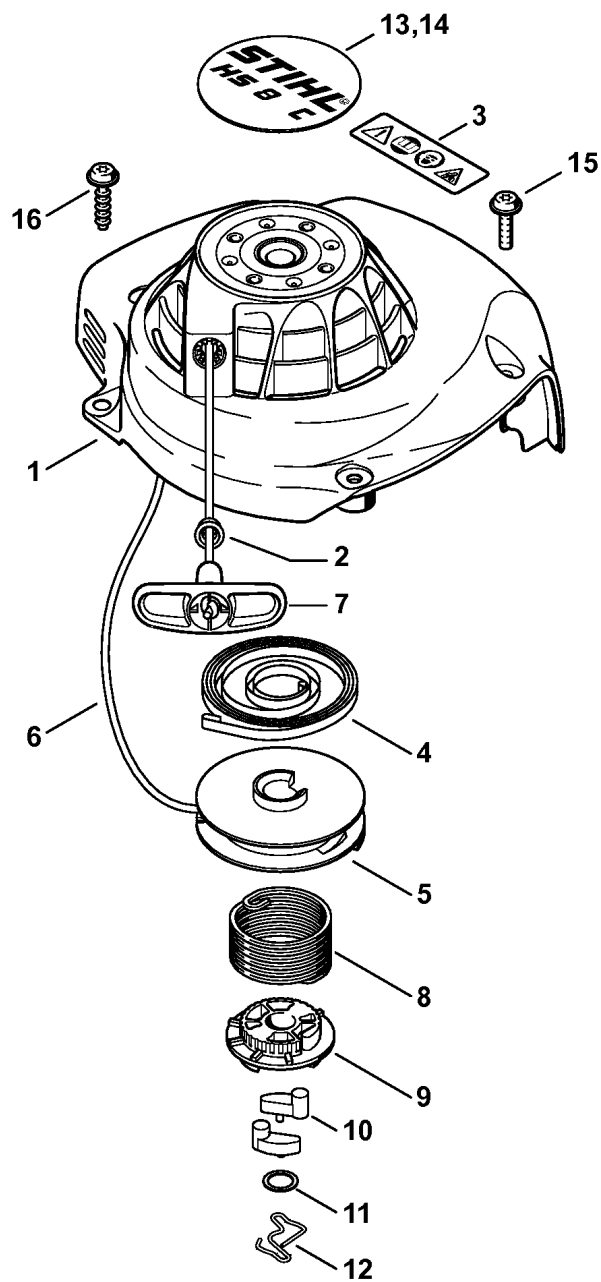
Reference	Item number	Qty	Description
1	4237 400 1202	1	Flywheel (25.2005)
2	0000 955 0802	1	Collar nut M8x1
3	4237 400 1302	1	Ignition module □ 4, 5
4	4237 405 1000	1	Spark plug boot
5	0000 998 0604	1	Torsion spring
6	4237 431 2100	1	Connector tag
7	9291 021 0100	1	Washer 4.3
8	9075 478 3018	2	Pan head self-tapping screw IS-D4x18
9	0000 400 7009	1	Spark plug Bosch USR7AC
10	4237 160 2000	1	Clutch □ 11 - 16
11		2	Clutch shoe (D)
12	0000 961 0608	2	Ring
13	0000 958 1000	2	Washer 16x10x0.5
14	0000 958 0609	2	Washer
15	0000 951 0606	2	Hexagon head screw
16	0000 997 5502	1	Tension spring
17	4237 021 3000	1	Engine housing
18	0000 951 1100	2	Screw IS-D5x20

(1) HS 81 R, (2) HS 81 R-Z, (3) HS 81 T, (4) HS 81 T-Z, (5) HS 86 R, (6) HS 86 R-Z, (7) HS 86 T, (8) HS 86 T-Z, (9) HS 81 RC-E, (10) HS 81 TC-E, (11) HS 81 TC-E Z



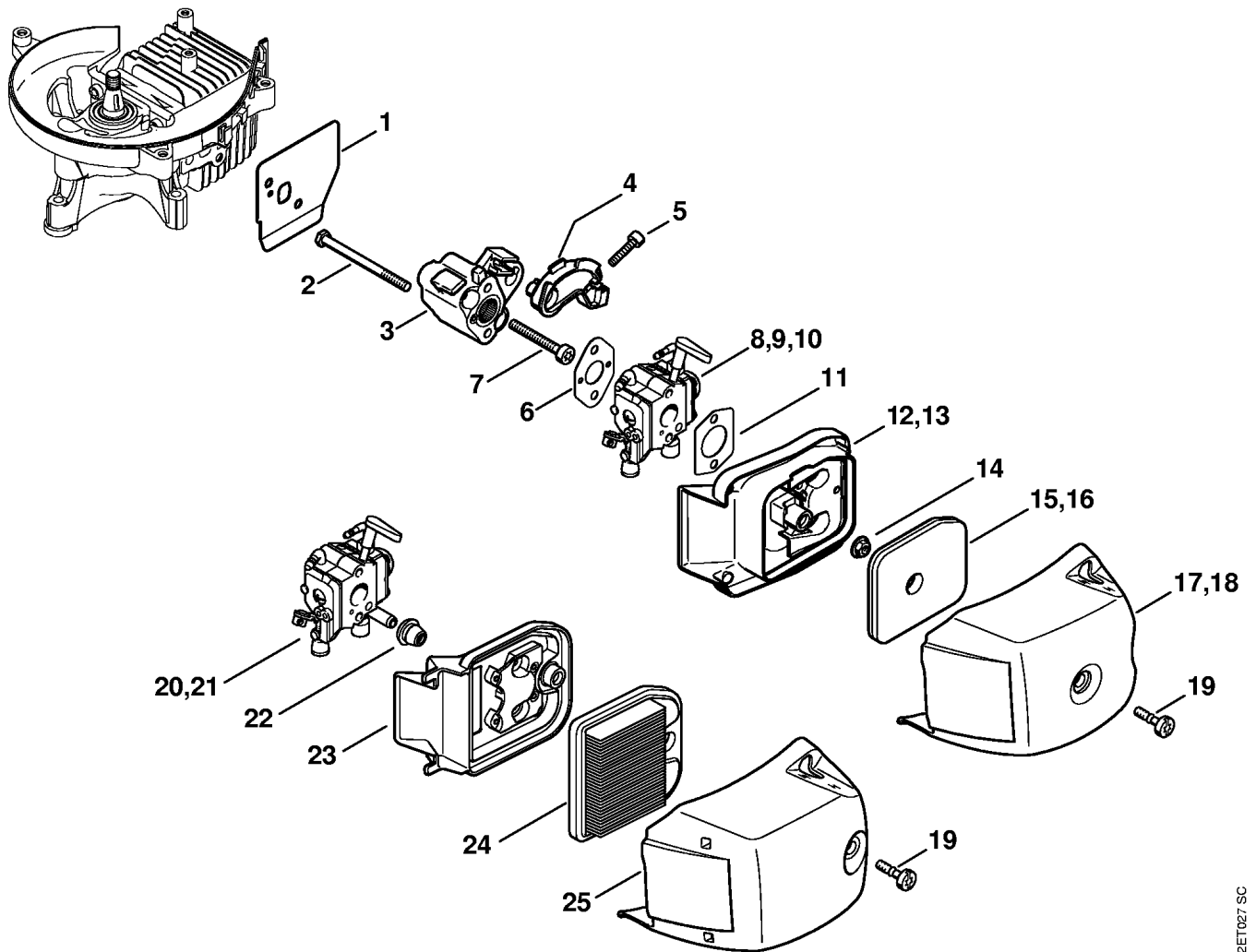
Reference	Item number	Qty	Description
	4237 080 2108	1	Fan housing with rewind starter (1-8) □ 1 - 10
1	4237 080 1802	1	Fan housing (1-8) □ 2, 10
2	9416 868 6650	1	Rivet 6.5x0.5x8.8 (1-8)
3	4237 190 0600	1	Rewind spring (1-8)
4	1123 195 0400	1	Rope rotor (1-8)
5	4237 195 8200	1	Starter rope Ø 2.7x1010 mm (1-8)
	0000 930 2281	1	Starter rope Ø 2.7 mm x 30.8 m (B) (1-8)
6	4140 195 3400	1	Starter grip (1-8)
	4237 190 5150	1	Pawl (1-8) □ 7 - 9
7		1	Pawl (D) (1-8)
8		1	Washer (D) (1-8)
9		1	Spring (D) (1-8)
10	0000 967 3700	1	Warning pictogram HS (1-8)
11	4237 967 1500	1	Model plate HS 81 R (1,2)
12	4237 967 1501	1	Model plate HS 81 T (3,4)
13	4237 967 1503	1	Model plate HS 86 R (5,6)
14	4237 967 1502	1	Model plate HS 86 T (7,8)
15	0000 951 1100	3	Screw IS-D5x20 (1-8)
16	9074 478 4420	2	Pan head self-tapping screw IS-P6x18 (1-8)

(1) HS 81 R, (2) HS 81 R-Z, (3) HS 81 T, (4) HS 81 T-Z, (5) HS 86 R, (6) HS 86 R-Z, (7) HS 86 T, (8) HS 86 T-Z, (9) HS 81 RC-E, (10) HS 81 TC-E, (11) HS 81 TC-E Z



Reference	Item number	Qty	Description
	4237 080 2104	1	Fan housing with rewind starter (9-11) □ 1 - 12
1	4237 080 1805	1	Fan housing (9-11) □ 2, 3
2	9416 868 6650	1	Rivet 6.5x0.5x8.8 (9-11)
3	0000 967 3700	1	Warning pictogram HS (9-11)
4	4237 190 0600	1	Rewind spring (9-11)
5	4237 195 0401	1	Rope rotor (9-11)
6	4137 195 8200	1	Starter rope Ø 2.7x910 mm (9-11)
	0000 930 2281	1	Starter rope Ø 2.7 mm x 30.8 m (B) (9-11)
7	4140 195 3400	1	Starter grip (9-11)
8	4241 195 3501	1	Spring (9-11)
9	4237 195 2001	1	Carrier (9-11)
10	1123 195 7200	2	Pawl (9-11)
11	0000 958 0923	1	Washer (9-11)
12	1128 195 3500	1	Spring (9-11)
13	4237 967 1505	1	Model plate HS 81 RC (9)
14	4237 967 1504	1	Model plate HS 81 TC (10,11)
15	0000 951 1100	3	Screw IS-D5x20 (9-11)
16	9074 478 4420	2	Pan head self-tapping screw IS-P6x18 (9-11)

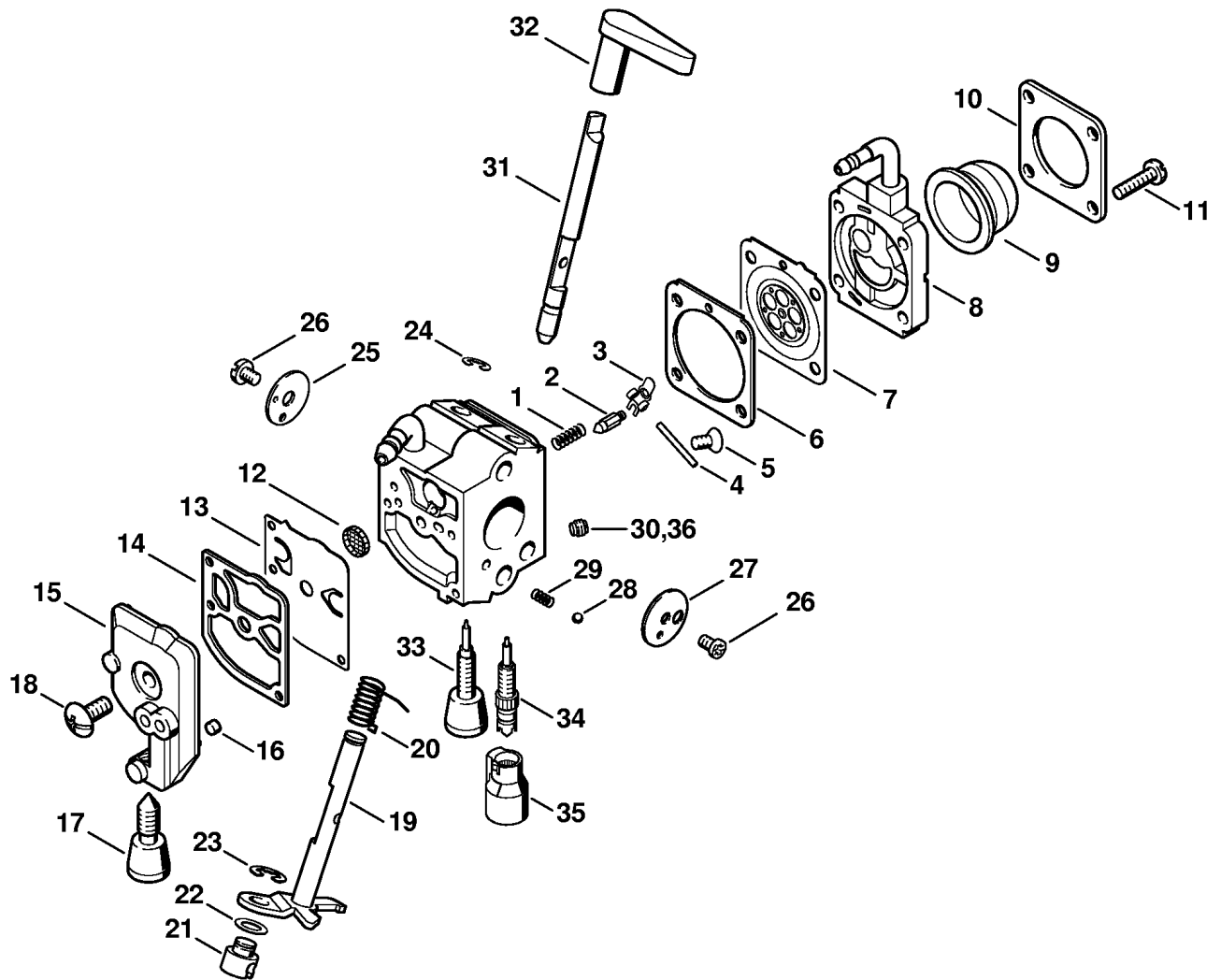
(1) HS 81 R, (2) HS 81 R-Z, (3) HS 81 T, (4) HS 81 T-Z, (5) HS 86 R, (6) HS 86 R-Z, (7) HS 86 T, (8) HS 86 T-Z, (9) HS 81 RC-E, (10) HS 81 TC-E, (11) HS 81 TC-E Z



442ET027 SC

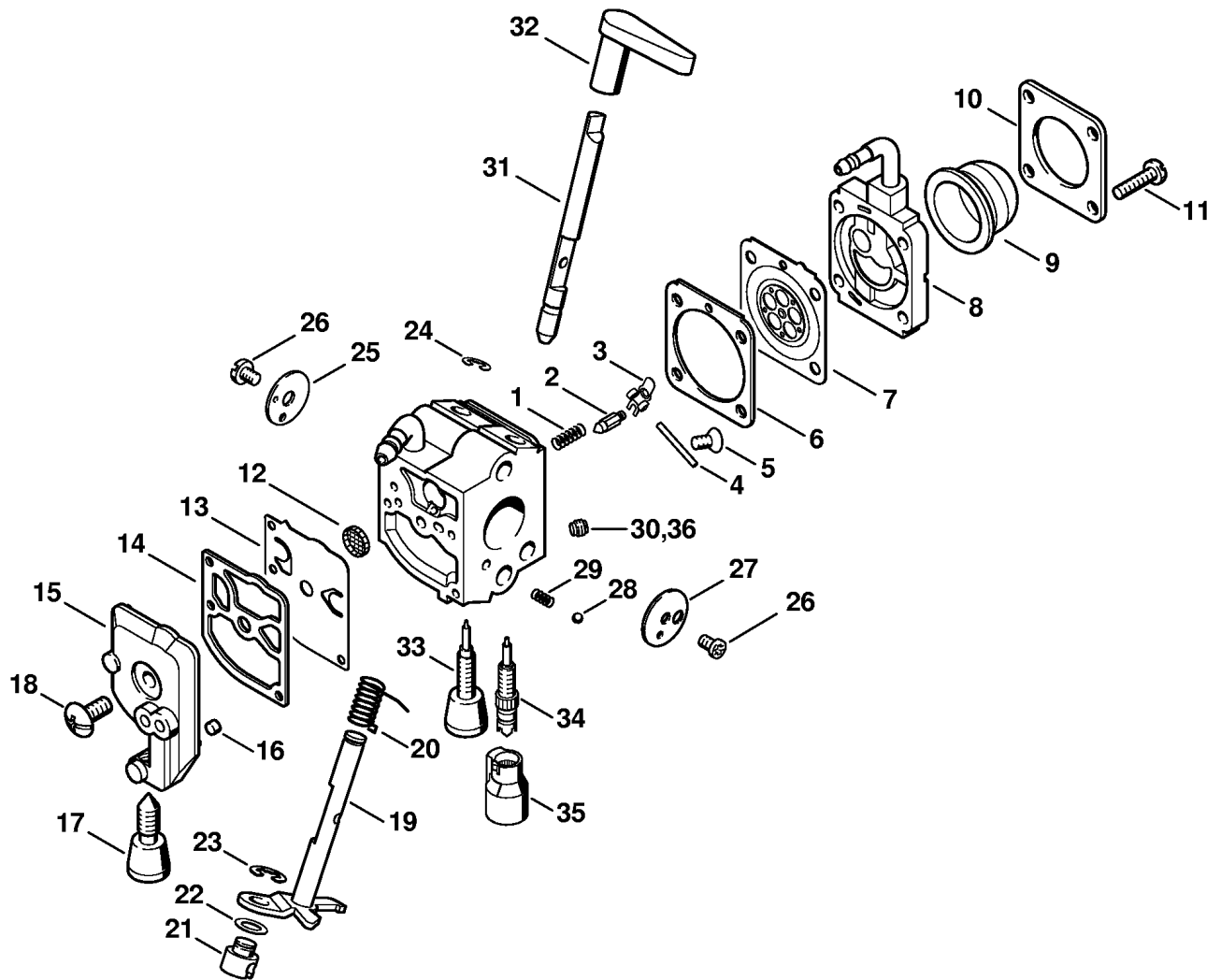
Reference	Item number	Qty	Description
1	4237 129 0905	1	Gasket
2	9007 319 1140	2	Hexagon head screw M5x70
3	4237 121 1603	1	Spacer flange
4	4237 182 7600	1	Tensioner
5	9022 371 0710	1	Spline screw IS-M4x20
6	4140 129 0900	1	Gasket
7	9075 478 4190	2	Pan head self-tapping screw IS-D5x45
8	4237 120 0604	1	Carburetor C1Q-S115B (1-8)
9	* 4237 120 0604	1	Carburetor C1Q-S115B (3,5,7) PRC (64.2007)
10	4237 120 0605	1	Carburetor C1Q-S116A (1) available in Brazil only
11	4114 149 1205	1	Gasket
12	4237 140 2801	1	Filter housing (1-8)
13	* 4237 140 2801	1	Filter housing (3,5,7) PRC (64.2007)
14	9216 261 0700	2	Hexagon nut M5
15	4237 120 1800	1	Filter (1-8)
16	* 4237 120 1800	1	Filter (3,5,7) PRC (64.2007)
17	4237 140 1003	1	Filter cover (1-8) □ 19
18	* 4237 140 1003	1	Filter cover (3,5,7) PRC (64.2007) □ 19
19	9022 319 1027	1	Screw IS-M5x21
20	4237 120 0606	1	Carburetor C1Q-S140 (9-11)
21	4237 120 0606	1	Carburetor C1Q-S140 (3,5,7) PRC
22	4134 123 7500	1	Grommet (3,5,7,9-11)
23	4237 140 2802	1	Filter housing (3,5,7,9-11)
24	4237 141 0300	1	Air filter (3,5,7,9-11)
25	4237 140 1002	1	Filter cover (3,5,7,9-11)
	4237 007 1000	1	Set of gaskets (B) □ 1, 6, 11

(1) HS 81 R, (2) HS 81 R-Z, (3) HS 81 T, (4) HS 81 T-Z, (5) HS 86 R, (6) HS 86 R-Z, (7) HS 86 T, (8) HS 86 T-Z, (9) HS 81 RC-E, (10) HS 81 TC-E, (11) HS 81 TC-E Z



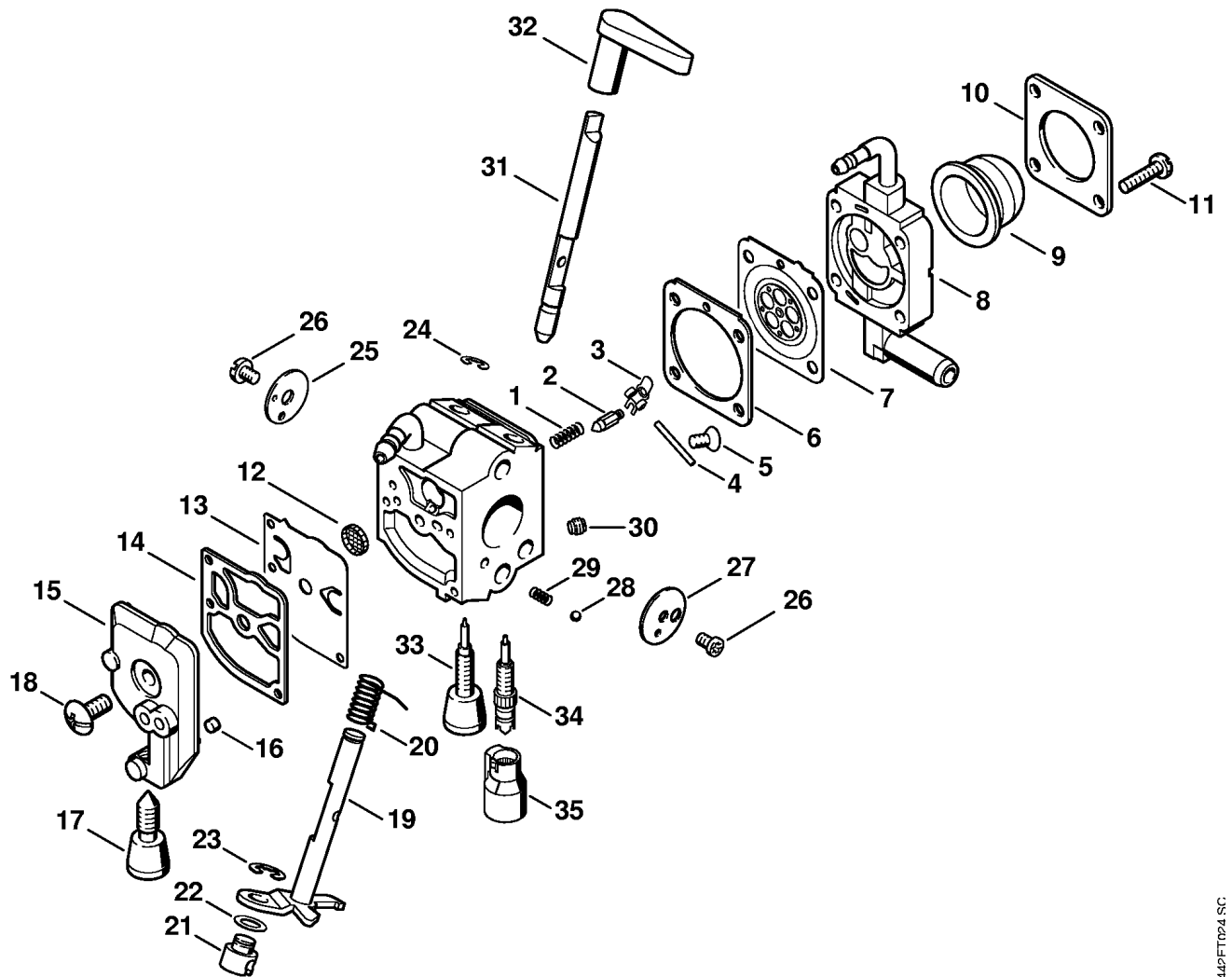
Reference	Item number	Qty	Description
	4237 120 0604	1	Carburetor C1Q-S115B (1-8) □ 1 - 35
	4237 120 0605	1	Carburetor C1Q-S116A (1) available in Brazil only □ 1 - 29, 31 - 36
*		1	Carburetor C1Q-S105 (C) (1-8) (64.2007) □ 1 - 35
*		1	Carburetor C1Q-S111 (C) (1) available in Brazil only (64.2007) □ 1 - 29, 31 - 36
1	1123 122 3001	1	Spring (1-8)
2	4116 121 5100	1	Inlet needle (1-8)
3	1125 121 5000	1	Inlet control lever (1-8)
4	1120 121 9200	1	Spindle (1-8)
5	1120 122 6600	1	Collar screw (1-8)
6	4229 129 0901	1	Gasket (1-8)
7	4229 121 4700	1	Metering diaphragm (1-8)
8	4237 120 2202	1	Flange (1-8)
9	4226 121 2700	1	Cap (1-8)
10	4140 121 0800	1	End cover (1-8)
11	4226 122 7100	4	Screw (1-8)
12	1123 121 7800	1	Strainer (1-8)
13	1129 121 4800	1	Pump diaphragm (1-8)
14	1123 129 0905	1	Gasket (1-8)
15	1123 121 0800	1	End cover (1-8)
16	1125 122 4200	1	Clamp (1-8)
17	4140 122 6200	1	Idle speed adjustment screw (1-8)
18	1120 122 7800	1	Oval head screw (1-8)

(1) HS 81 R, (2) HS 81 R-Z, (3) HS 81 T, (4) HS 81 T-Z, (5) HS 86 R, (6) HS 86 R-Z, (7) HS 86 T, (8) HS 86 T-Z, (9) HS 81 RC-E, (10) HS 81 TC-E, (11) HS 81 TC-E Z



Reference	Item number	Qty	Description
19	4237 120 7100	1	Throttle shaft with lever (1-8)
20	1123 122 3000	1	Spring (1-8)
21	4128 121 8901	1	Pin (1-8)
22	4137 121 8600	1	Washer (1-8)
23	1120 122 9000	1	E-clip (1-8)
24	1125 122 9001	1	E-clip (1-8)
25	4237 121 3300	1	Throttle shutter (1-8)
26	1125 122 7403	2	Round head screw (1-8)
27	4128 121 2900	1	Choke shutter (1-8)
28	4119 122 4200	1	Ball (1-8)
29	4119 122 3002	1	Spring (1-8)
30	4237 121 5600	1	Fixed jet 0.38 (1-8)
31	4237 121 3000	1	Choke shaft (1-8)
32	4237 182 9500	1	Choke knob (1-8)
33	4237 122 6800	1	Low speed adjustment screw (1-8)
34	4229 122 6701	1	High speed adjustment screw (1-8)
35	4229 121 2701	1	Cap (1-8)
36	1132 121 5640	1	Fixed jet 0.40 (1) BR
	4229 007 1060	1	Set of carburetor parts (1-8)
			□ 6, 7, 13, 14

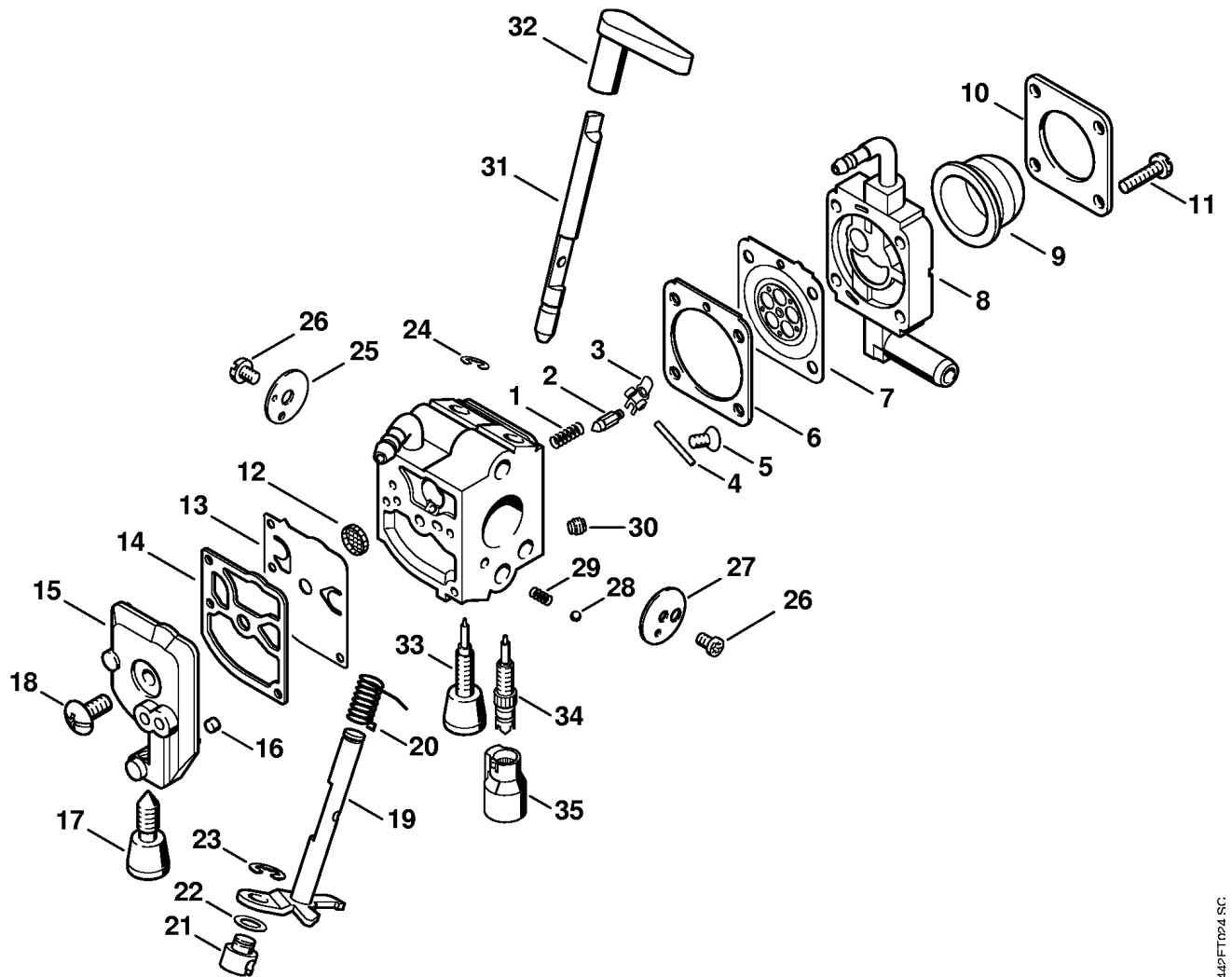
(1) HS 81 R, (2) HS 81 R-Z, (3) HS 81 T, (4) HS 81 T-Z, (5) HS 86 R, (6) HS 86 R-Z, (7) HS 86 T, (8) HS 86 T-Z, (9) HS 81 RC-E, (10) HS 81 TC-E, (11) HS 81 TC-E Z



442FT024 SC

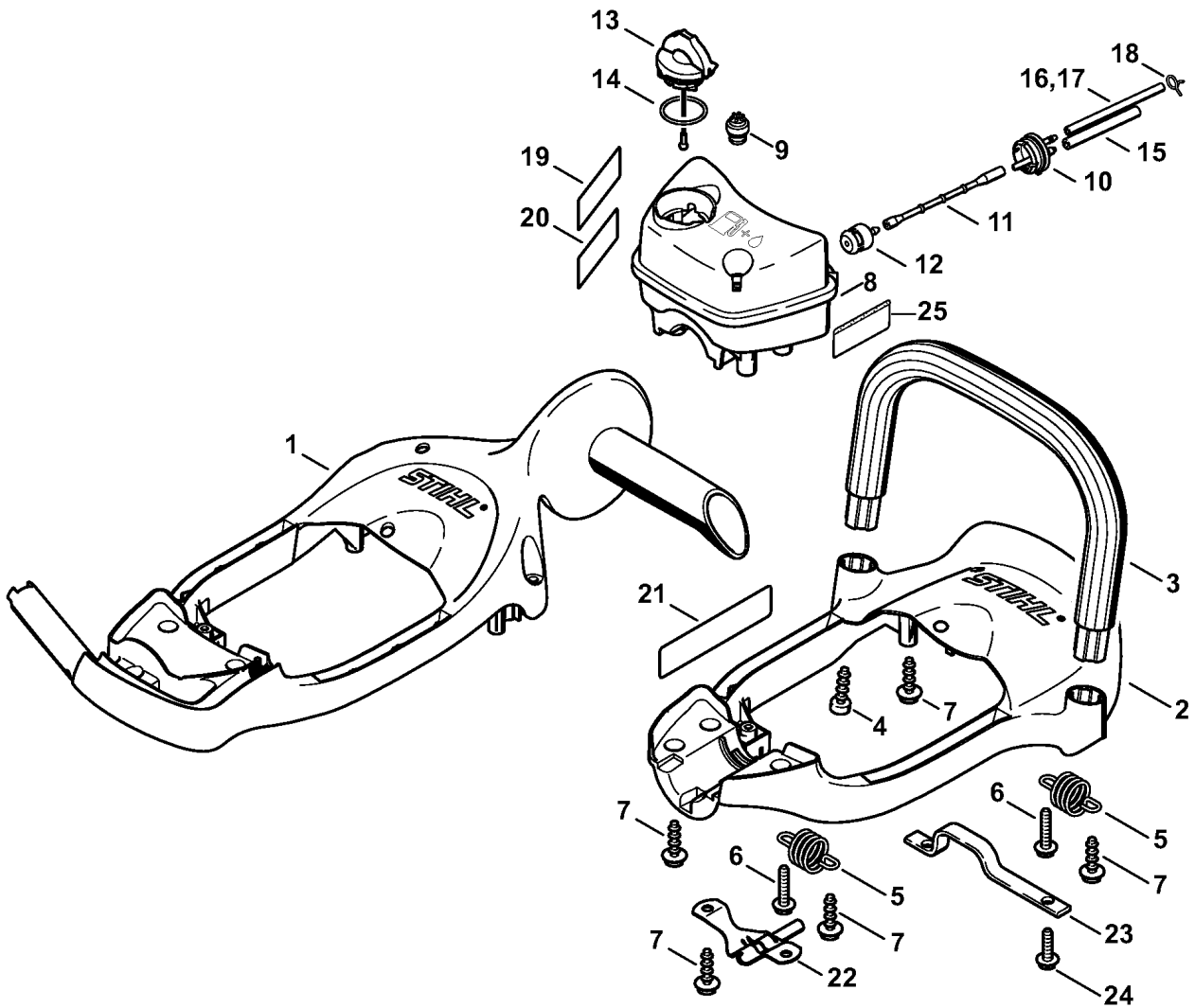
Reference	Item number	Qty	Description
	4237 120 0606	1	Carburetor C1Q-S140 (3,5,7,9-11) □ 1 - 35
1	1123 122 3001	1	Spring (3,5,7,9-11)
2	4116 121 5100	1	Inlet needle (3,5,7,9-11)
3	1125 121 5000	1	Inlet control lever (3,5,7,9-11)
4	1120 121 9200	1	Spindle (3,5,7,9-11)
5	1120 122 6600	1	Collar screw (3,5,7,9-11)
6	4229 129 0901	1	Gasket (3,5,7,9-11)
7	4180 121 4700	1	Metering diaphragm (3,5,7,9-11)
8	4237 120 2201	1	Flange (3,5,7,9-11)
9	4226 121 2700	1	Cap (3,5,7,9-11)
10	4140 121 0800	1	End cover (3,5,7,9-11)
11	4140 122 7100	4	Screw (3,5,7,9-11)
12	1123 121 7800	1	Strainer (3,5,7,9-11)
13	1129 121 4800	1	Pump diaphragm (3,5,7,9-11)
14	1123 129 0905	1	Gasket (3,5,7,9-11)
15	1123 121 0800	1	End cover (3,5,7,9-11)
16	1125 122 4200	1	Clamp (3,5,7,9-11)
17	4140 122 6200	1	Idle speed adjustment screw (3,5,7,9-11)
18	1120 122 7800	1	Oval head screw (3,5,7,9-11)

(1) HS 81 R, (2) HS 81 R-Z, (3) HS 81 T, (4) HS 81 T-Z, (5) HS 86 R, (6) HS 86 R-Z, (7) HS 86 T, (8) HS 86 T-Z, (9) HS 81 RC-E, (10) HS 81 TC-E, (11) HS 81 TC-E Z



Reference	Item number	Qty	Description
19	4237 120 7100	1	Throttle shaft with lever (3,5,7,9-11)
20	1123 122 3000	1	Spring (3,5,7,9-11)
21	4128 121 8901	1	Pin (3,5,7,9-11)
22	4137 121 8600	1	Washer (3,5,7,9-11)
23	1120 122 9000	1	E-clip (3,5,7,9-11)
24	1125 122 9001	1	E-clip (3,5,7,9-11)
25	4237 121 3300	1	Throttle shutter (3,5,7,9-11)
26	1125 122 7403	2	Round head screw (3,5,7,9-11)
27	4128 121 2900	1	Choke shutter (3,5,7,9-11)
28	4119 122 4200	1	Ball (3,5,7,9-11)
29	4119 122 3002	1	Spring (3,5,7,9-11)
30	4229 121 5603	1	Fixed jet 0.37 (3,5,7,9-11)
31	4237 121 3000	1	Choke shaft (3,5,7,9-11)
32	4237 182 9500	1	Choke knob (3,5,7,9-11)
33	4237 122 6801	1	Low speed adjustment screw (3,5,7,9-11)
34	4229 122 6702	1	High speed adjustment screw (3,5,7,9-11)
35	4229 121 2701	1	Cap (3,5,7,9-11)
	4229 007 1060	1	Set of carburetor parts (3,5,7,9-11)
			□ 6, 7, 13, 14

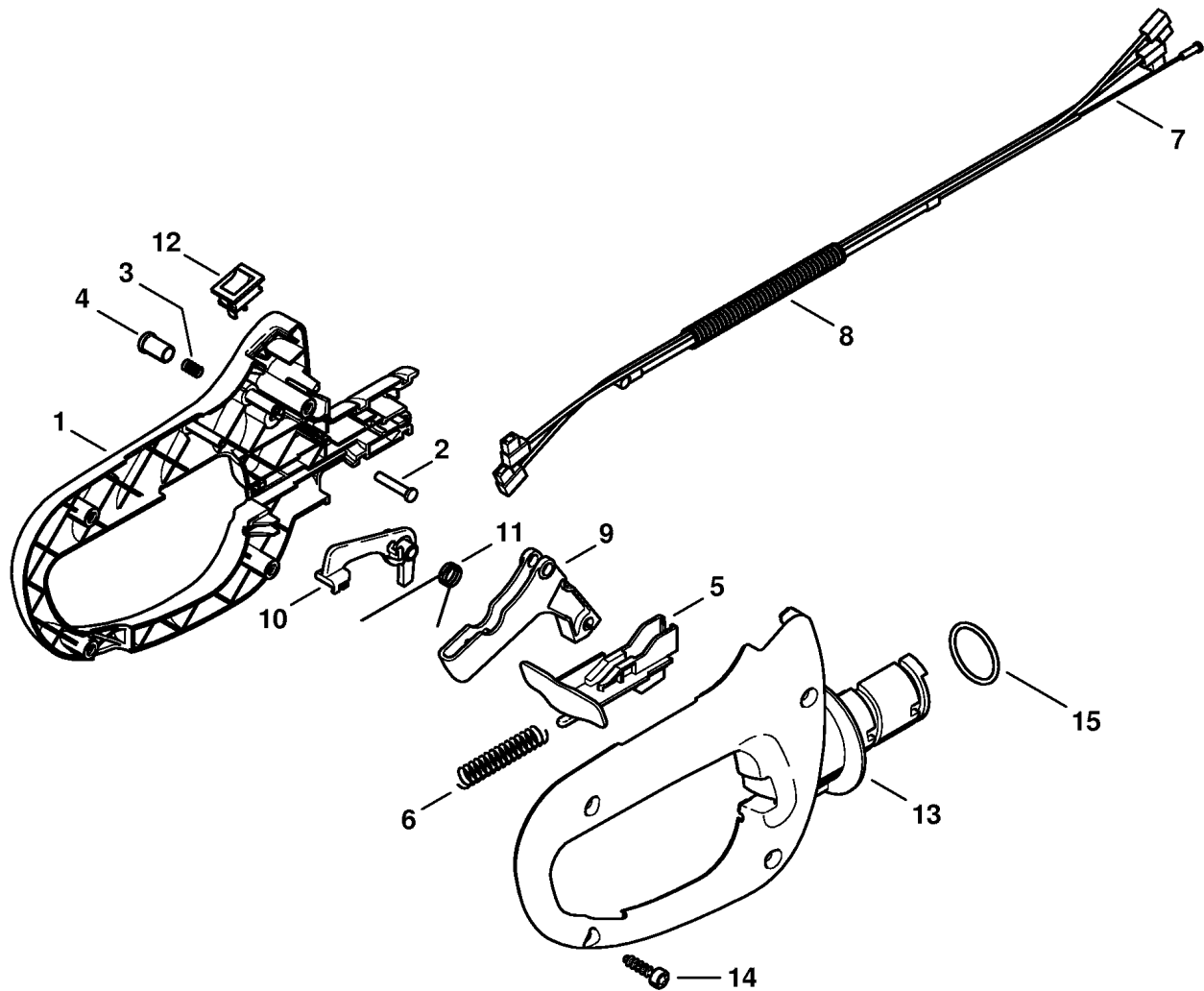
(1) HS 81 R, (2) HS 81 R-Z, (3) HS 81 T, (4) HS 81 T-Z, (5) HS 86 R, (6) HS 86 R-Z, (7) HS 86 T, (8) HS 86 T-Z, (9) HS 81 RC-E, (10) HS 81 TC-E, (11) HS 81 TC-E Z



442ET032 AM

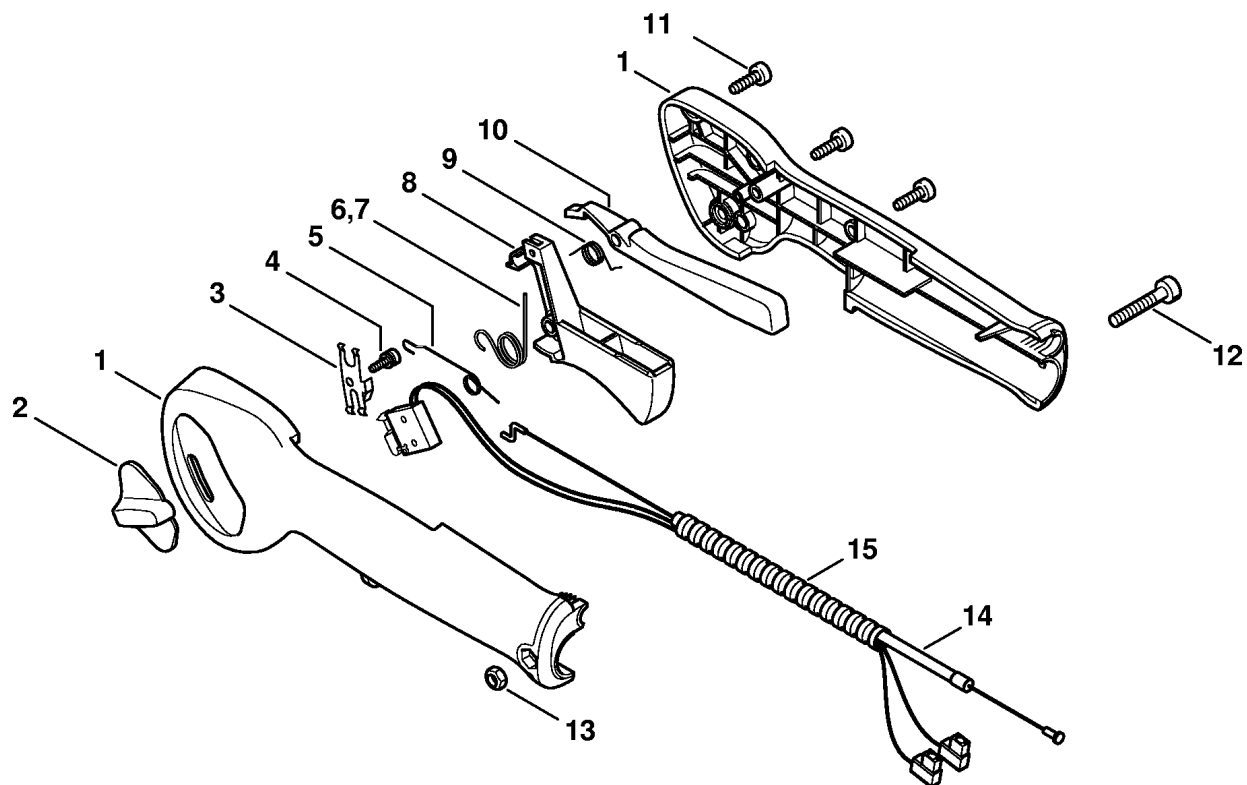
Reference	Item number	Qty	Description
1	4237 791 4901	1	Handle frame (5-8)
2	4237 791 4900	1	Handle frame (1-4,9-11)
3	4237 791 1700	1	Handlebar (1-4,9-11)
4	9074 478 4425	2	Pan head self-tapping screw IS-P6x19 (1-4,9-11)
5	4237 791 3101	4	Spring
6	0000 951 1100	4	Screw IS-D5x20
7	9074 478 4420	10	Pan head self-tapping screw IS-P6x18
8	4237 350 0450	1	Fuel tank □ 9 - 17
9	0000 350 5800	1	Tank vent
10	4237 350 1400	1	Connector (01.2007) □ 11
11		1	Hose (D)
12	0000 350 3503	1	Pickup body
13	0000 350 0504	1	Filler cap □ 14
14	9645 948 7734	1	O-ring 25x3.5
15		1	Hose 3.1x5.7x140 mm (D)
	0000 930 2803	1	Hose 3.1x5.7 mm x 1 m (A,B)
16		1	Hose 2.2x5.4x170 mm (D)
17	*	1	Hose 2.2x5.4x190 mm (D) (1-8) (64.2007)
	0000 930 2802	1	Hose 2.2x5.4 mm x 1 m (A,B)
18	* 4205 122 2500	1	Hose clip (1-8) (64.2007)
19	0000 967 3749	1	Warning pictogram Filler cap (2,4,6,8,11) USA, CDN
20	0000 967 3541	1	Instruction label (2,4,6,8,11) USA
21	0000 967 3500	1	Instruction label (2,4,6,8,11) USA
22	4237 792 9400	1	Limit stop (1,2,5,6,9)
23	4237 792 1100	1	Strut (1,2,5,6,9)
24	9074 478 4420	2	Pan head self-tapping screw IS-P6x18 (1,2,5,6,9)
25	0000 967 4054	1	Warning Spark arresting screen (2,4,6,8) USA

(1) HS 81 R, (2) HS 81 R-Z, (3) HS 81 T, (4) HS 81 T-Z, (5) HS 86 R, (6) HS 86 R-Z, (7) HS 86 T, (8) HS 86 T-Z, (9) HS 81 RC-E, (10) HS 81 TC-E, (11) HS 81 TC-E Z



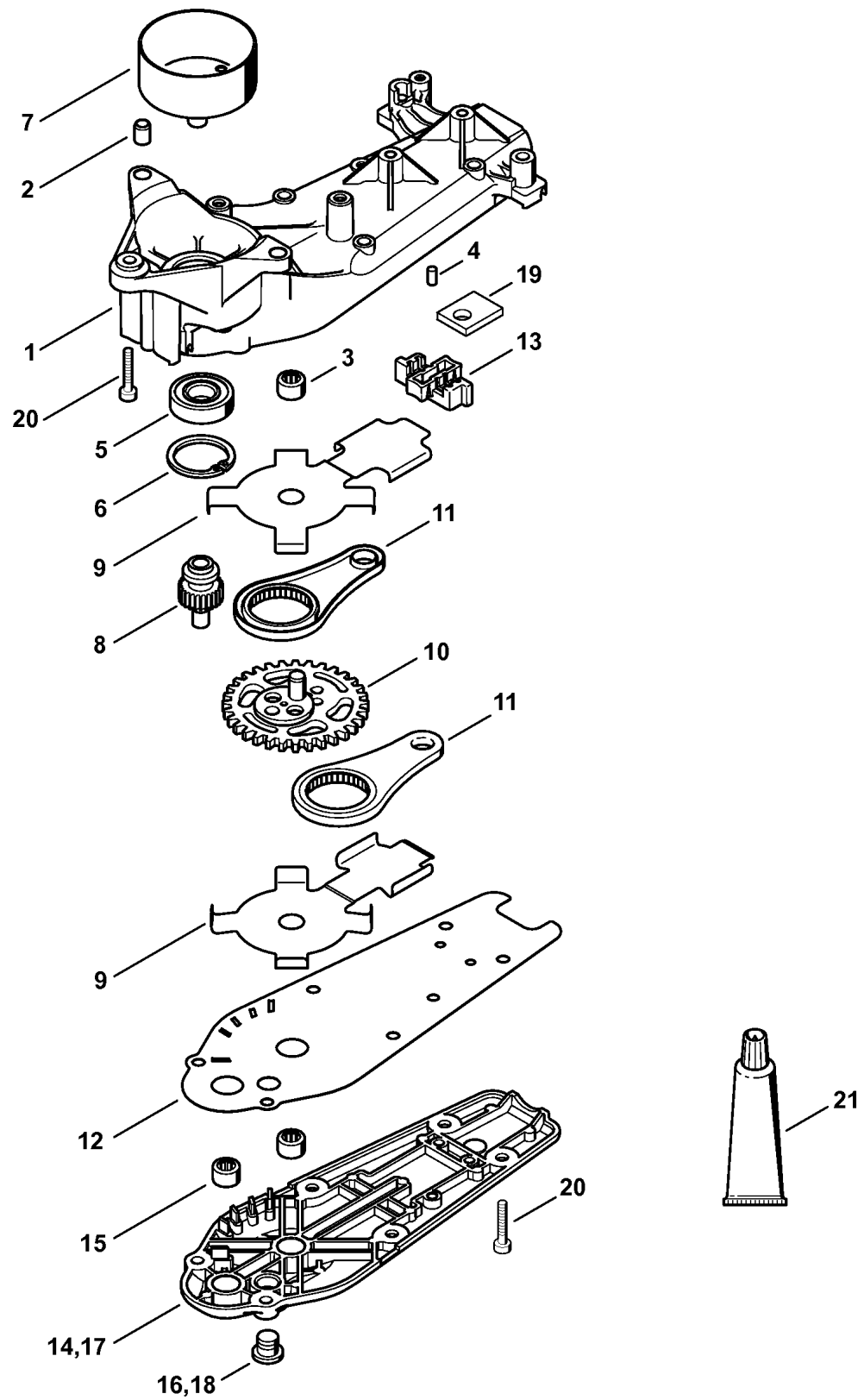
Reference	Item number	Qty	Description
1	4237 791 0601	1	Handle molding, left (1-4,9-11)
2	1113 182 8901	1	Pin (1-4,9-11)
3	0000 997 0603	1	Compression spring (1-4,9-11)
4	4228 182 9300	1	Starting throttle lock (1-4,9-11)
5	4237 792 7100	1	Blocking lever (1-4,9-11)
6	0000 997 0724	1	Compression spring (1-4,9-11)
	4237 180 1102	1	Throttle cable (1-4,9-11)
			□ 7, 8
7	4237 182 3201	1	Throttle cable (1-4,9-11)
8		1	Hose 125 mm (D) (1-4,9-11)
	4203 711 7201	1	Hose 960 mm / 37 13/16" (B) (1-4,9-11)
9	4237 182 1000	1	Throttle trigger (1-4,9-11)
10	4237 182 0800	1	Trigger interlock (1-4,9-11)
11	0000 998 1006	1	Torsion spring (1-4,9-11)
12	4314 430 0200	1	Stop switch (1-4,9-11)
13	4237 791 0602	1	Handle molding, right (1-4,9-11)
14	9074 477 4132	4	Pan head self-tapping screw IS-P5x18 (1-4,9-11)
15	9645 945 7790	1	O-ring 28.17x3.53 (1-4,9-11)

(1) HS 81 R, (2) HS 81 R-Z, (3) HS 81 T, (4) HS 81 T-Z, (5) HS 86 R, (6) HS 86 R-Z, (7) HS 86 T, (8) HS 86 T-Z, (9) HS 81 RC-E, (10) HS 81 TC-E, (11) HS 81 TC-E Z



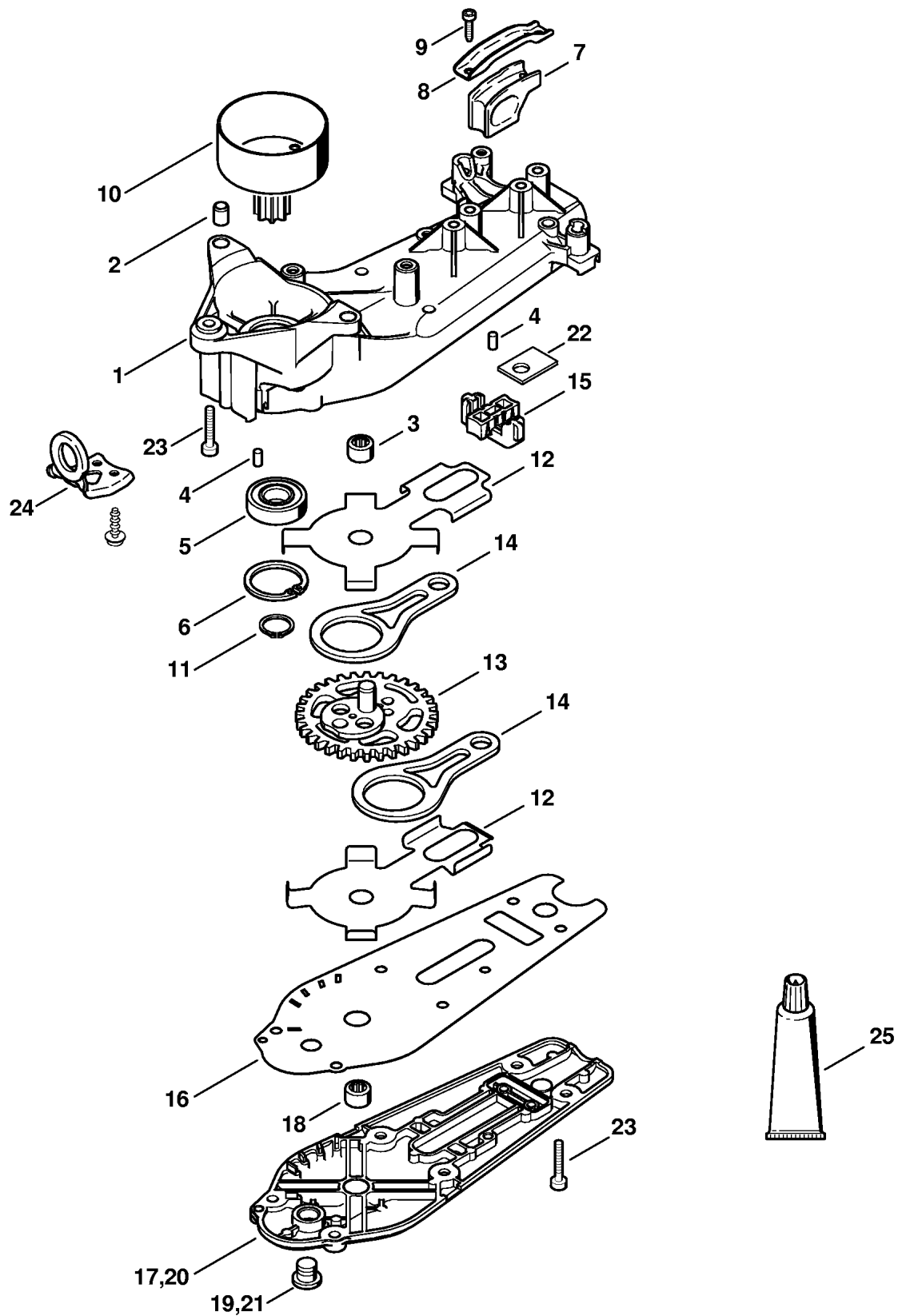
Reference	Item number	Qty	Description
	4140 790 1304	1	Control handle (5-8) □ 1 - 6, 8 - 13
1	4140 790 0301	1	Handle (5-8)
2	4128 182 1700	1	Slide control (5-8)
3	4128 182 4201	1	Detent spring (5-8)
4	4128 182 6200	1	Collar screw (5-8)
5	4128 182 4502	1	Torsion spring (5-8)
6	4128 182 4504	1	Torsion spring (5-8)
7	* 4128 182 4500	1	Torsion spring (5-8) (37.2006)
8	4128 182 1000	1	Throttle trigger (5-8)
9	4128 182 4501	1	Torsion spring (5-8)
10	4128 182 0800	1	Trigger interlock (5-8)
11	9074 478 3025	3	Pan head self-tapping screw IS-P4x16 (5-8)
12	9022 346 1070	1	Spline screw IS-M5x30 (5-8)
13	9214 320 0700	1	Lock nut M5 (5-8)
	4237 180 1101	1	Throttle cable (5-8) □ 14, 15
14	4237 182 3200	1	Throttle cable (5-8)
15		1	Hose 300 mm / 11 13/16" (D) (5-8)
	4203 711 7201	1	Hose 960 mm / 37 13/16" (B) (5-8)

(1) HS 81 R, (2) HS 81 R-Z, (3) HS 81 T, (4) HS 81 T-Z, (5) HS 86 R, (6) HS 86 R-Z, (7) HS 86 T, (8) HS 86 T-Z, (9) HS 81 RC-E, (10) HS 81 TC-E, (11) HS 81 TC-E Z



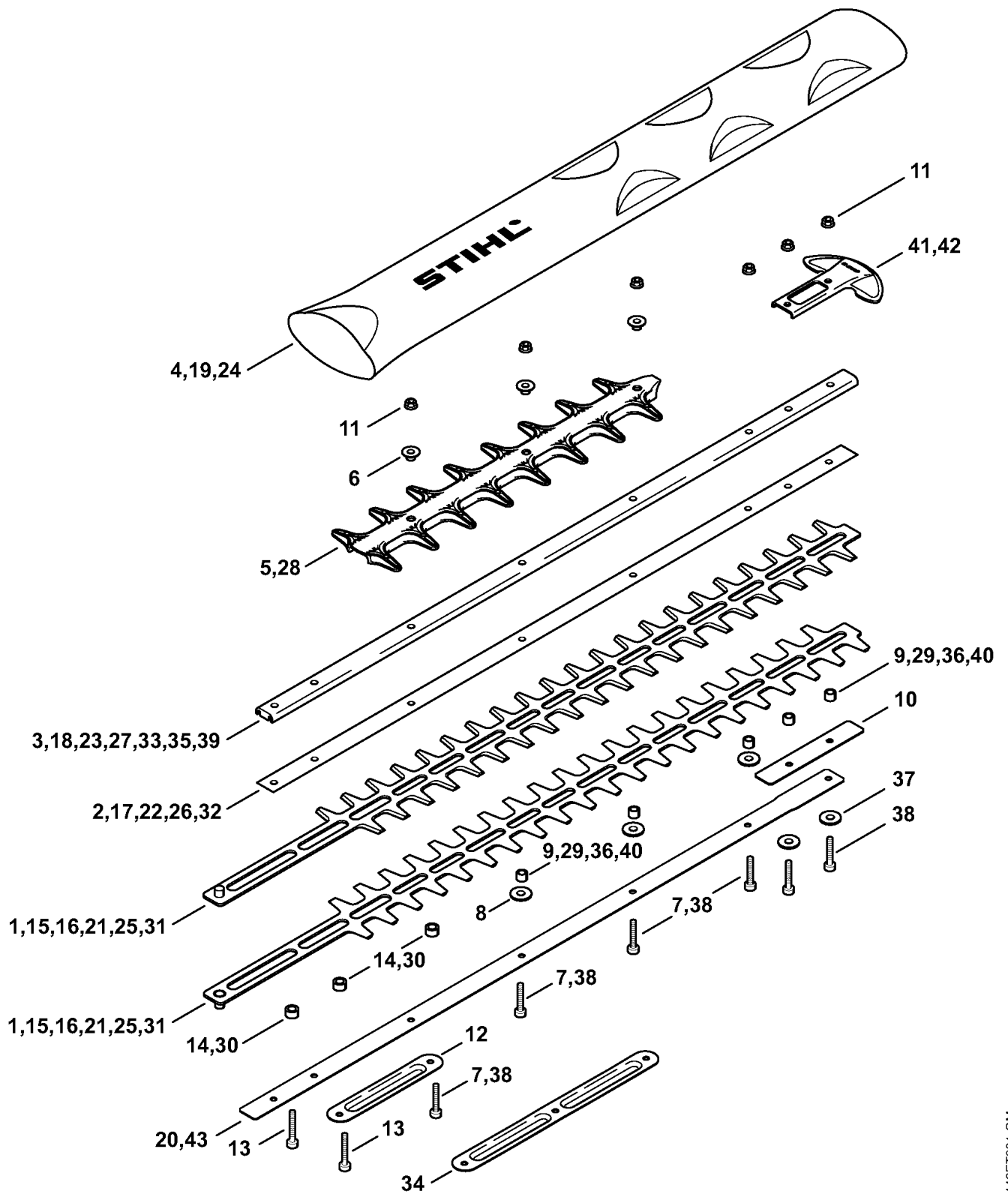
Reference	Item number	Qty	Description
1	4237 640 0500	1	Gear housing (3,4,7,8,10,11) □ 2 - 6
2	0000 988 8600	2	Sleeve (3,4,7,8,10,11)
3	9513 003 0912	1	Needle cage 8x12x8 (3,4,7,8,10,11)
4	9381 003 2070	1	Cylindrical pin 4x12 (3,4,7,8,10,11)
5	9503 003 5190	1	Grooved ball bearing 6001-2RS (3,4,7,8,10,11)
6	9456 621 3100	1	Circlip 28x1.2 (3,4,7,8,10,11)
7	4237 160 2900	1	Clutch drum (3,4,7,8,10,11)
8	4237 642 0400	1	Drive pinion (3,4,7,8,10,11)
9	4237 642 4800	2	Thrust plate (3,4,7,8,10,11)
10	4237 640 7500	1	Spur gear (3,4,7,8,10,11)
11	4237 640 6801	2	Connecting rod (3,4,7,8,10,11)
12	4237 649 0300	1	Gasket (3,4,7,8,10,11)
13	4237 649 0301	1	Gasket (3,4,7,8,10,11)
14	4237 640 5800	1	Gearbox cover (3,4,7,8,10,11) □ 15, 16
15	9513 003 0912	2	Needle cage 8x12x8 (3,4,7,8,10,11)
16	4226 641 6500	1	Screw plug (3,4,7,8,10,11)
17	4237 640 5804	1	Gearbox cover (3) PRC □ 15, 18
18	4237 641 6502	1	Screw plug (3) PRC
19	4237 649 0307	1	Gasket (3) PRC
20	9075 478 4159	9	Pan head self-tapping screw IS-D5x24 (3,4,7,8,10,11)
21	0781 120 1109	1	Gear lubricant 80 g (B) (3,4,7,8,10,11)

(1) HS 81 R, (2) HS 81 R-Z, (3) HS 81 T, (4) HS 81 T-Z, (5) HS 86 R, (6) HS 86 R-Z, (7) HS 86 T, (8) HS 86 T-Z, (9) HS 81 RC-E, (10) HS 81 TC-E, (11) HS 81 TC-E Z



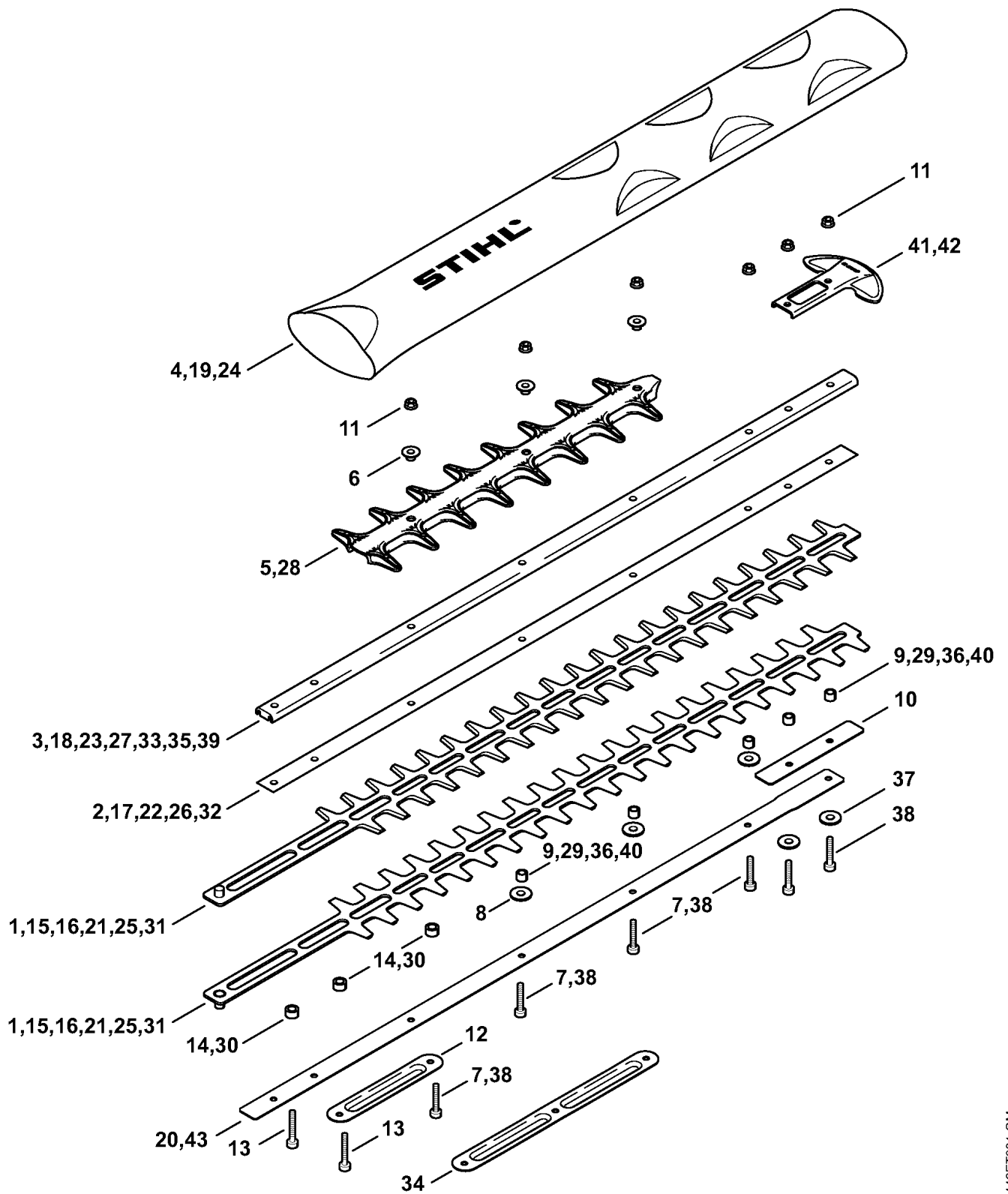
Reference	Item number	Qty	Description
1	4237 640 0501	1	Gear housing (1,2,5,6,9) □ 2 - 9
2	0000 988 8600	2	Sleeve (1,2,5,6,9)
3	9513 003 0912	1	Needle cage 8x12x8 (1,2,5,6,9)
4	9381 003 2070	2	Cylindrical pin 4x12 (1,2,5,6,9)
5	9503 003 5290	1	Grooved ball bearing 6002-2RS (1,2,5,6,9)
6	9456 621 3600	1	Circlip 32x1.2 (1,2,5,6,9)
7	4237 792 9300	1	Rubber buffer (1,2,5,6,9)
8	4237 792 2500	1	Support (1,2,5,6,9)
9	9075 478 3018	2	Pan head self-tapping screw IS-D4x18 (1,2,5,6,9)
10	4237 160 2901	1	Clutch drum (1,2,5,6,9)
11	9455 621 1380	1	Circlip 14x1 (1,2,5,6,9)
12	4237 642 4801	2	Thrust plate (1,2,5,6,9)
13	4237 640 7501	1	Spur gear (1,2,5,6,9)
14	4226 642 6501	2	Connecting rod (1,2,5,6,9)
15	4237 649 0304	1	Gasket (1,2,5,6,9)
16	4237 649 0302	1	Gasket (1,2,5,6,9)
17	4237 640 5801	1	Gearbox cover (1,2,5,6,9) □ 18, 19
18	9513 003 0912	1	Needle cage 8x12x8 (1,2,5,6,9)
19	4226 641 6500	1	Screw plug (1,2,5,6,9)
20	4237 640 5805	1	Gearbox cover (5) PRC □ 18, 21
21	4237 641 6502	1	Screw plug (5) PRC
22	4237 649 0308	1	Gasket (5) PRC
23	9075 478 4159	9	Pan head self-tapping screw IS-D5x24 (1,2,5,6,9)
24	4237 790 9700	1	Stop buffer (1,2,5,6,9)
25	0781 120 1109	1	Gear lubricant 80 g (B) (1,2,5,6,9)

(1) HS 81 R, (2) HS 81 R-Z, (3) HS 81 T, (4) HS 81 T-Z, (5) HS 86 R, (6) HS 86 R-Z, (7) HS 86 T, (8) HS 86 T-Z, (9) HS 81 RC-E, (10) HS 81 TC-E, (11) HS 81 TC-E Z



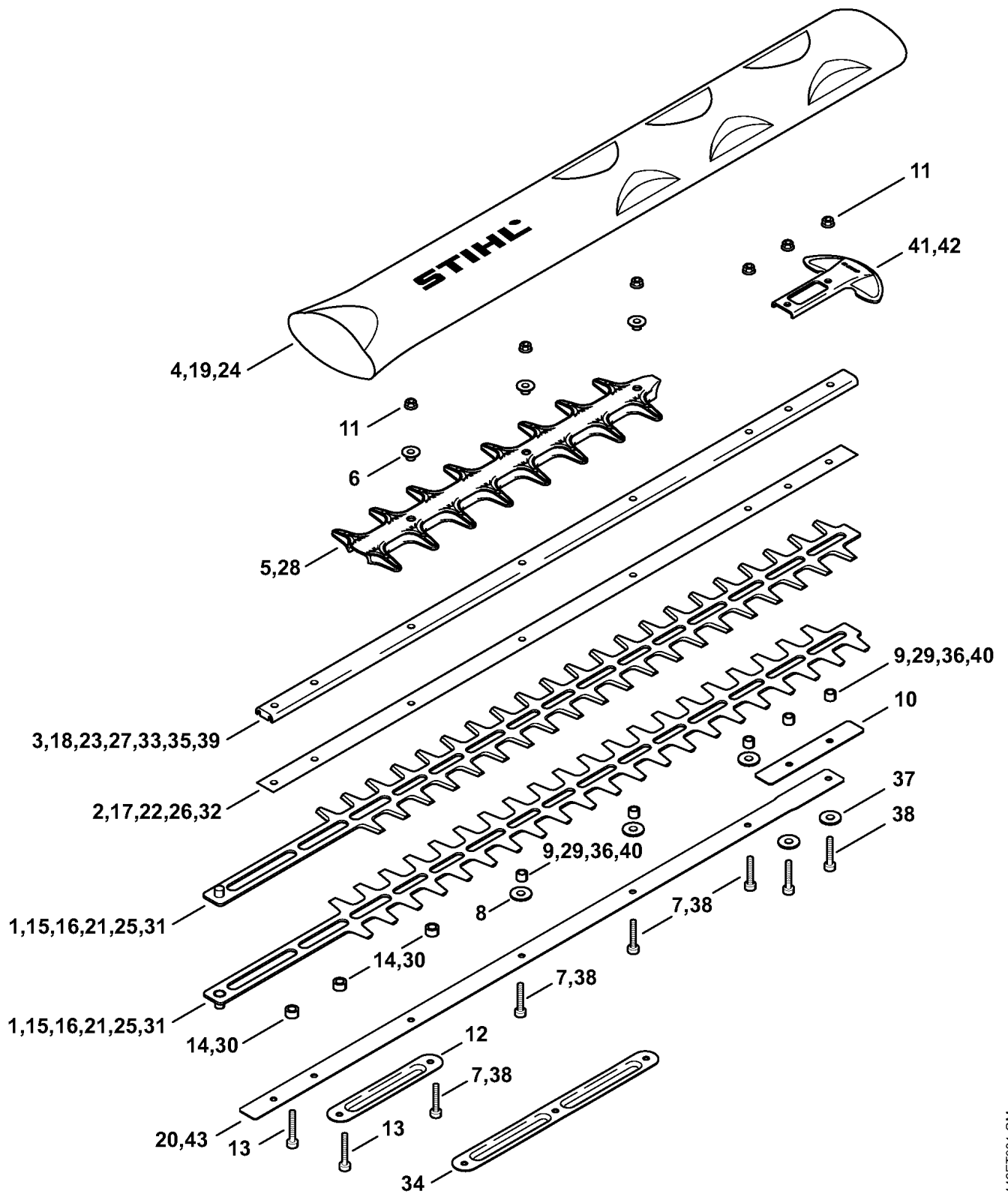
Reference	Item number	Qty	Description
	4237 710 5900	1	Cutter bar assy. 500 mm / 20" T (3,4) □ 1 - 3, 5 - 14
	4237 710 6050	1	Blade 500 mm / 20" T (3,4) □ 1
1		2	Blade 500 mm / 20" T (D) (3,4)
2	4237 713 2205	1	Blade friction plate 500 mm / 20" T (3,4)
3	4237 641 4605	1	Guide 500 mm / 20" T (3,4)
4	4237 790 9209	1	Blade guard 500 mm / 20" (3,4)
5	4237 740 9500	1	Cutter guard (3,4,10,11) □ 6
6	* 4237 716 3600	3	Bushing (3,4)
7	9022 341 1050		Spline screw IS-M5x25 (1-4,9-11) (quantity as required)
8	4237 958 0500		Washer (1-4,9-11) (quantity as required)
9	4237 641 4903		Sleeve 4.92 mm (3,4,10,11) (quantity as required)
10	4237 717 3100	1	Cover plate (3,4,10,11)
11	9216 263 0710		Hexagon nut M5 (1-4,9-11) (quantity as required)
12	4237 711 4800	1	Stiffener (1-4,9)
13	9022 341 1070	2	Spline screw IS-M5x30 (1-4,9-11)
14	4237 711 2500	3	Sleeve 4.87 mm (3,4,10,11)

(1) HS 81 R, (2) HS 81 R-Z, (3) HS 81 T, (4) HS 81 T-Z, (5) HS 86 R, (6) HS 86 R-Z, (7) HS 86 T, (8) HS 86 T-Z, (9) HS 81 RC-E, (10) HS 81 TC-E, (11) HS 81 TC-E Z



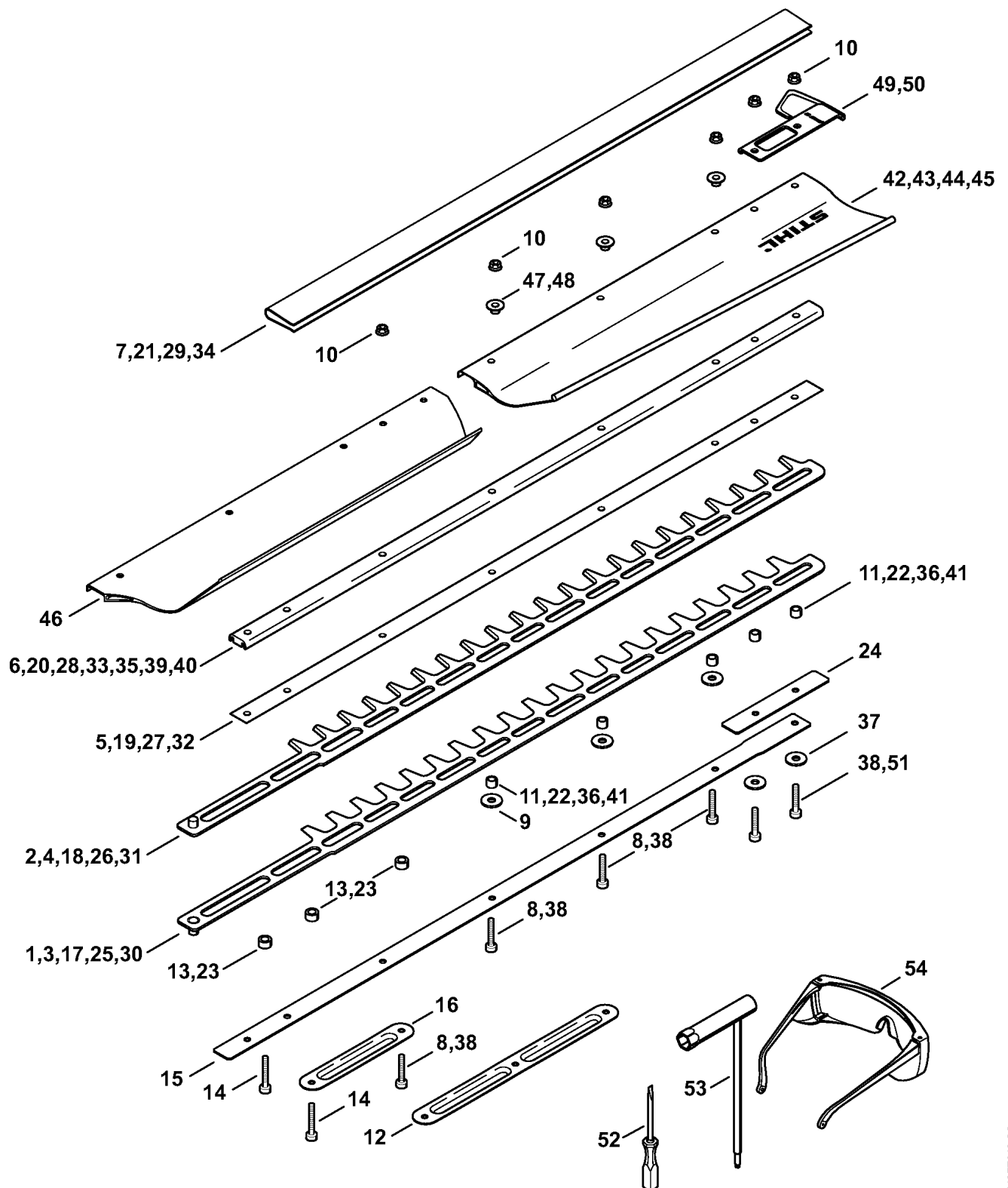
Reference	Item number	Qty	Description
	4237 710 5901	1	Cutter bar assy. 600 mm / 24" T (3,4,10,11) □ 5 - 11, 13 - 15, 17, 18
	4237 710 6051	1	Blade 600 mm / 24" T (3,4,10,11) □ 15
15		2	Blade 600 mm / 24" T (D) (3)
		1	Cutter bar assy. 600 mm / 24" T (D) (3) PRC □ 5, 11, 13, 14, 16, 17, 19, 20, 35, 36, 38, 41
	4237 710 6059	1	Blade 600 mm / 24" T (3) PRC □ 16
16		2	Blade 600 mm / 24" T (D) (3) PRC
17	4237 713 2200	1	Blade friction plate 600 mm / 24" T (3,4,10,11)
18	4237 641 4601	1	Guide 600 mm / 24" T (3,4,10,11)
19	4237 790 9208	1	Blade guard 600 mm / 24" (1-4,9-11)
20	4237 717 3101	1	Cover plate (3) PRC
	4237 710 5902	1	Cutter bar assy. 750 mm / 30" T (3,4) □ 5 - 14, 21 - 23
	4237 710 6052	1	Blade 750 mm / 30" T (3,4) □ 21
21		2	Blade 750 mm / 30" T (D) (3,4)
22	4237 713 2201	1	Blade friction plate 750 mm / 30" T (3,4)
23	4237 641 4602	1	Guide 750 mm / 30" T (3,4)
24	4237 790 9207	1	Blade guard 750 mm / 30" (1-4)
	4237 710 5903	1	Cutter bar assy. 600 mm / 24" R (1,2,9) □ 7 ,8, 11 - 13, 19, 25 - 30
	4237 710 6053	1	Blade 600 mm / 24" R (1,2,9) □ 25
25		2	Blade 600 mm / 24" R (D) (1,2,9)

(1) HS 81 R, (2) HS 81 R-Z, (3) HS 81 T, (4) HS 81 T-Z, (5) HS 86 R, (6) HS 86 R-Z, (7) HS 86 T, (8) HS 86 T-Z, (9) HS 81 RC-E, (10) HS 81 TC-E, (11) HS 81 TC-E Z



Reference	Item number	Qty	Description
26	4237 713 2203	1	Blade friction plate 600 mm / 24" R (1,2,9)
27	4237 641 4600	1	Guide 600 mm / 24" R (1,2,9)
28	4237 740 9501	1	Cutter guard (1,2,9) □ 6
29	4237 641 4901		Sleeve 8 x 5.62 mm (1,2,9) (quantity as required)
30	4237 711 2501	3	Sleeve 5.57 mm (1,2,9)
	4237 710 5904	1	Cutter bar assy. 750 mm / 30" R (1,2) □ 7, 8, 11, 13, 24, 28 - 34
	4237 710 6054	1	Blade 750 mm / 30" R (1,2) □ 31
31		2	Blade 750 mm / 30" R (D) (1,2)
32	4237 713 2204	1	Blade friction plate 750 mm / 30" R (1,2)
33	4237 641 4604	1	Guide 750 mm / 30" R (1,2)
34	4237 711 4801	1	Stiffener (1,2)
	4237 007 1001	1	Blade clearance adjuster kit 600 mm / 24" T (B) (3,4,7,10,11) □ 35 - 38
	4237 007 1008	1	Blade clearance adjuster kit 600 mm / 24" R (B) (1,2,9) □ 11, 37 - 40
35	4237 740 6501	1	Guide 600 mm / 24" T (3,4,7,10,11)
36	4237 641 4900	5	Sleeve 8 x 3.8 mm (3,4,7,10,11)
37	4237 958 0500	2	Washer (B) (1-4,7,9-11)
38	4237 716 0400	6	Spline screw IS-M5x25 (1-4,7,9-11)
39	4237 740 6504	1	Guide 600 mm / 24" R (B) (1,2,9)
40	4237 641 4902	6	Sleeve 8 x 4.5 mm (B) (1,2,9)
41	4237 792 9000	1	Guide guard (3,4,10,11)
42	4237 790 9802	1	Guide guard (1,2,9) □ 7, 11, 29, 37
43	4237 717 3105	1	Cover plate (B) (1,2,9)

(1) HS 81 R, (2) HS 81 R-Z, (3) HS 81 T, (4) HS 81 T-Z, (5) HS 86 R, (6) HS 86 R-Z, (7) HS 86 T, (8) HS 86 T-Z, (9) HS 81 RC-E, (10) HS 81 TC-E, (11) HS 81 TC-E Z



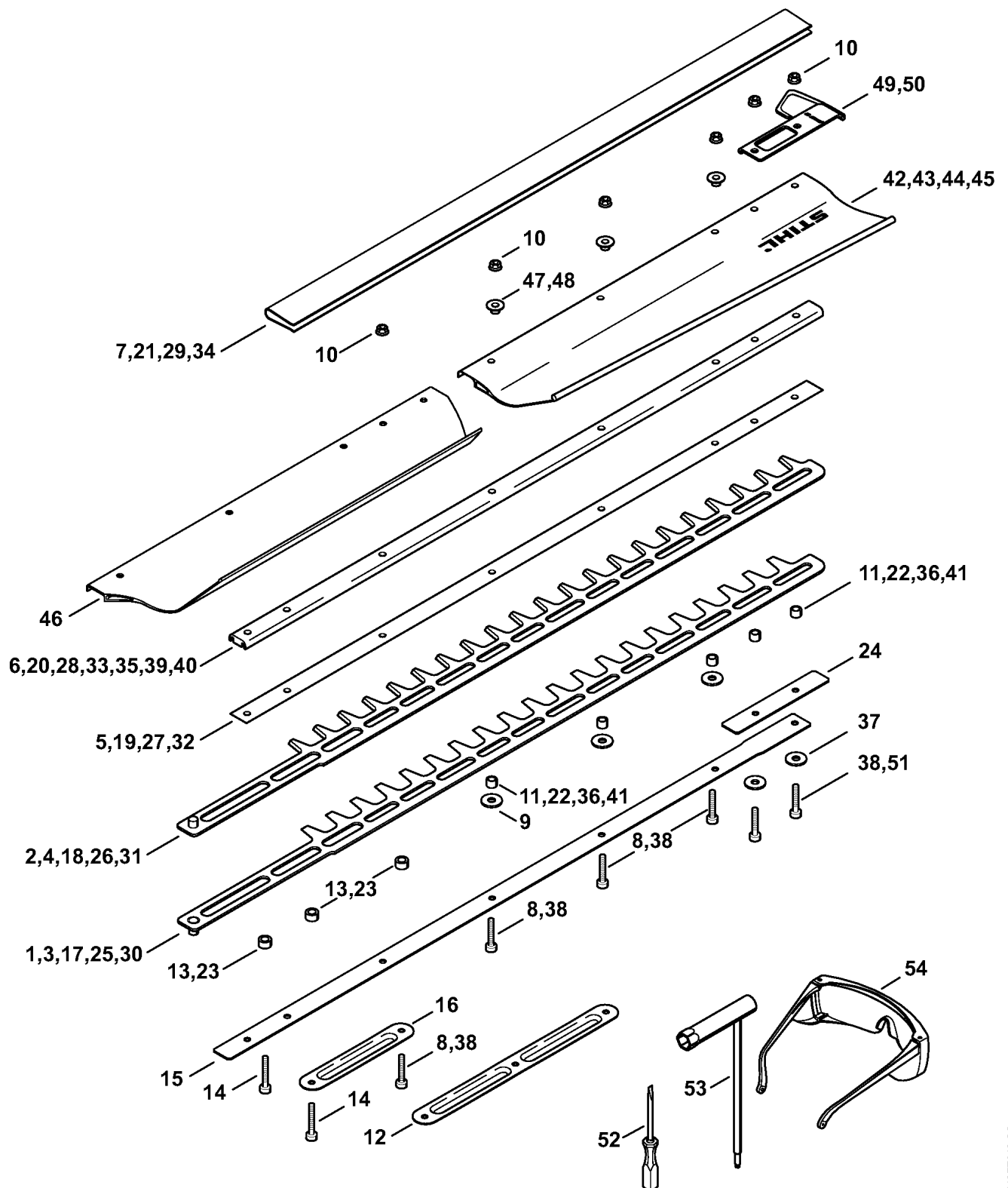
Reference	Item number	Qty	Description
	4237 710 5907	1	Cutter bar assy. 750 mm / 30" R (5,6) □ 1, 2, 5 - 14
	4237 710 6057	1	Blade 750 mm / 30" R (5,6) □ 1, 2
1		1	Blade 750 mm / 30" R (D) (5,6)
2		1	Blade 750 mm / 30" R (D) (5,6)
		1	Cutter bar assy. 750 mm / 30" R (D) (5) PRC □ 1 - 5, 7, 10, 11, 13, 15, 40, 41, 45, 49, 50
	4237 710 6060	1	Blade 750 mm / 30" R (5) PRC □ 3, 4
3		1	Blade 750 mm / 30" R (D) (5) PRC
4		1	Blade 750 mm / 30" R (D) (5) PRC
5	4237 713 2204	1	Blade friction plate 750 mm / 30" R (5,6)
6	4237 641 4604	1	Guide 750 mm / 30" R (5,6)
7	4237 790 9210	1	Blade guard 750 mm / 30" R (5,6)
8	9022 341 1050		Spline screw IS-M5x25 (5-8) (quantity as required)
9	4237 958 0500		Washer (5-8) (quantity as required)
10	9216 263 0710		Hexagon nut M5 (5-8) (quantity as required)
11	4237 641 4901		Sleeve 8 x 5.62 mm (5,6) (quantity as required)
12	4237 711 4801	1	Stiffener (5,6)
13	4237 711 2501		Sleeve 5.57 mm (5,6) (quantity as required)
14	9022 341 1070	2	Spline screw IS-M5x30 (5-8)
15	4237 717 3103	1	Cover plate (5) PRC

(1) HS 81 R, (2) HS 81 R-Z, (3) HS 81 T, (4) HS 81 T-Z, (5) HS 86 R, (6) HS 86 R-Z, (7) HS 86 T, (8) HS 86 T-Z, (9) HS 81 RC-E, (10) HS 81 TC-E, (11) HS 81 TC-E Z



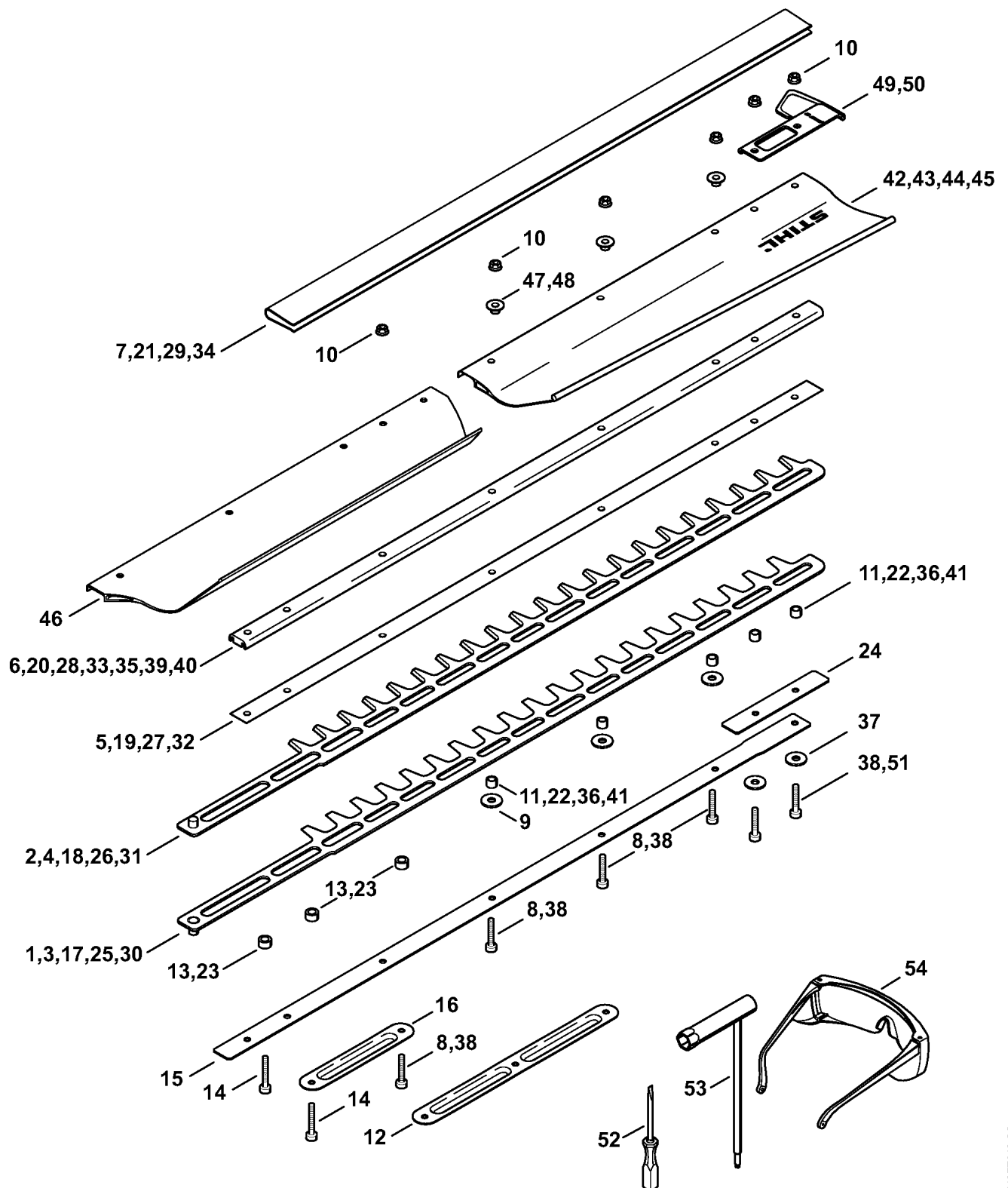
Reference	Item number	Qty	Description
	4237 710 5905	1	Cutter bar assy. 750 mm / 30" T (7,8) □ 8 - 10, 14, 16 - 24
16	4237 711 4800	1	Stiffener (7,8)
	4237 710 6055	1	Blade 750 mm / 30" T (7,8) □ 17, 18
17		1	Blade 750 mm / 30" T (D) (7,8)
18		1	Blade 750 mm / 30" T (D) (7,8)
19	4237 713 2201	1	Blade friction plate 750 mm / 30" T (7,8)
20	4237 641 4602	1	Guide 750 mm / 30" T (7,8)
21	4237 790 9202	1	Blade guard 750 mm / 30" T (7,8)
22	4237 641 4903		Sleeve 4.92 mm (7,8) (quantity as required)
23	4237 711 2500	3	Sleeve 4.87 mm (7,8)
24	4237 717 3100	1	Cover plate (7,8)
	4237 710 5906	1	Cutter bar assy. 1000 mm / 40" T (7,8) □ 8 - 10, 14, 16, 22 - 29
	4237 710 6056	1	Blade 1000 mm / 40" T (7,8) □ 25, 26
25		1	Blade 1000 mm / 40" T (D) (7,8)
26		1	Blade 1000 mm / 40" T (D) (7,8)
27	4237 713 2202	1	Blade friction plate 1000 mm / 40" T (7,8)
28	4237 641 4603	1	Guide 1000 mm / 40" T (7,8)
29	4237 790 9203	1	Blade guard 1000 mm / 40" T (7,8)

(1) HS 81 R, (2) HS 81 R-Z, (3) HS 81 T, (4) HS 81 T-Z, (5) HS 86 R, (6) HS 86 R-Z, (7) HS 86 T, (8) HS 86 T-Z, (9) HS 81 RC-E, (10) HS 81 TC-E, (11) HS 81 TC-E Z



Reference	Item number	Qty	Description
		1	Cutter bar assy. 600 mm / 24" T (D) (7) J □ 8 - 10, 14, 22 - 24, 30 - 34
	4237 710 6058	1	Blade 600 mm / 24" T (7) J □ 30, 31
30		1	Blade 600 mm / 24" T (D) (7) J
31		1	Blade 600 mm / 24" T (D) (7) J
32	4237 713 2200	1	Blade friction plate 600 mm / 24" T (7) J
33	4237 641 4601	1	Guide 600 mm / 24" T (7) J
34	4237 790 9211	1	Blade guard 600 mm / 24" T (7) J
	4237 007 1003	1	Blade clearance adjuster kit 1000 mm / 40" T (B) (7,8) □ 35 - 38
35	4237 740 6503	1	Guide 1000 mm / 40" T (B) (7,8)
36	4237 641 4900	6	Sleeve 8 x 3.8 mm (B) (3,4,7,8)
37	4237 958 0500	2	Washer (3,4,7,8)
38	4237 716 0400	6	Spline screw IS-M5x25 (1-8)
39	4237 740 6502	1	Guide 750 mm / 30" T (B) (3,4,7,8)
	4237 007 1002	1	Blade clearance adjuster kit 750 mm / 30" T (B) (3,4,7,8) □ 36 - 39
	4237 007 1009	1	Blade clearance adjuster kit 750 mm / 30" R (B) (1,2,5,6) □ 38, 40, 41
40	4237 740 6505	1	Guide 750 mm / 30" R (1,2,5,6)
41	4237 641 4902	6	Sleeve 8 x 4.5 mm (1,2,5,6)

(1) HS 81 R, (2) HS 81 R-Z, (3) HS 81 T, (4) HS 81 T-Z, (5) HS 86 R, (6) HS 86 R-Z, (7) HS 86 T, (8) HS 86 T-Z, (9) HS 81 RC-E, (10) HS 81 TC-E, (11) HS 81 TC-E Z



Reference	Item number	Qty	Description
42	4237 740 3301	1	Catcher blade 1000 mm / 40" T (B) (7,8) □ 47
43	4237 740 3300	1	Catcher blade 750 mm / 30" T (B) (7,8) □ 47
44	4237 740 3305	1	Catcher blade 600 mm / 24" T (B) (7) J □ 47
45	4237 740 3302	1	Catcher blade 750 mm / 30" R (5,6) □ 47
46	4237 740 3306	1	Catcher blade 750 mm / 30" R (5) □ 47
47	0000 963 1303		Bushing (B) (5-8) (quantity as required)
48	* 4237 716 3600		Bushing (B) (7,8) (quantity as required)
49	4237 790 9800	1	Guide guard (7,8) □ 51
50	4237 790 9801	1	Guide guard (5,6) □ 51
51	9022 341 1070	2	Spline screw IS-M5x30 (7,8)
52	0000 890 2300	1	Screwdriver
53	4237 890 3400	1	Combination wrench
54	0000 884 0307	1	Safety glasses (B)

(1) HS 81 R, (2) HS 81 R-Z, (3) HS 81 T, (4) HS 81 T-Z, (5) HS 86 R, (6) HS 86 R-Z, (7) HS 86 T, (8) HS 86 T-Z, (9) HS 81 RC-E, (10) HS 81 TC-E, (11) HS 81 TC-E Z