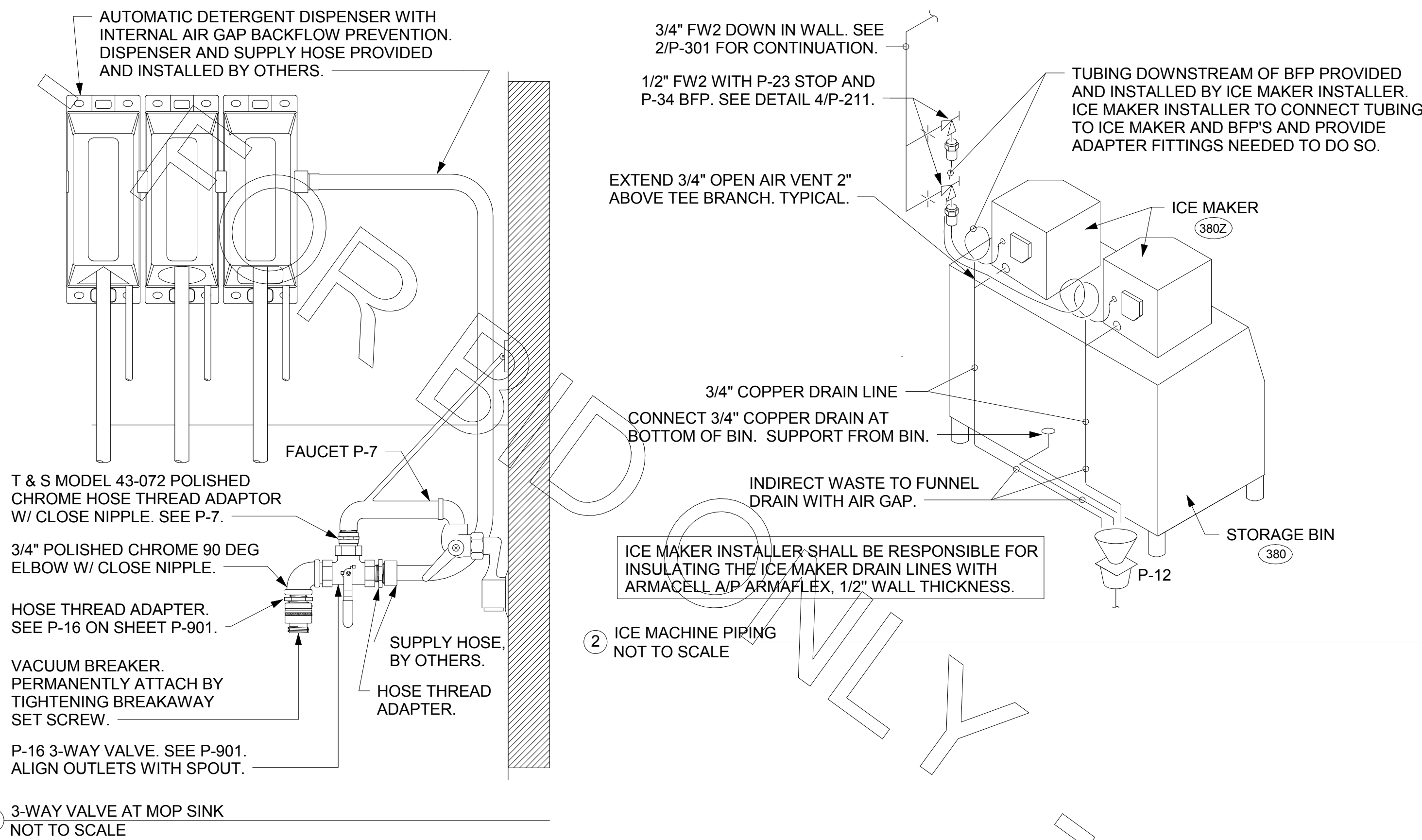


3/12/2018 3:56:10 PM

1 WATER PIPING PLAN PLUMBING
1/4" = 1'-0"

4 3-WAY VALVE AT MOP SINK
NOT TO SCALE



3. SHEET NOTES

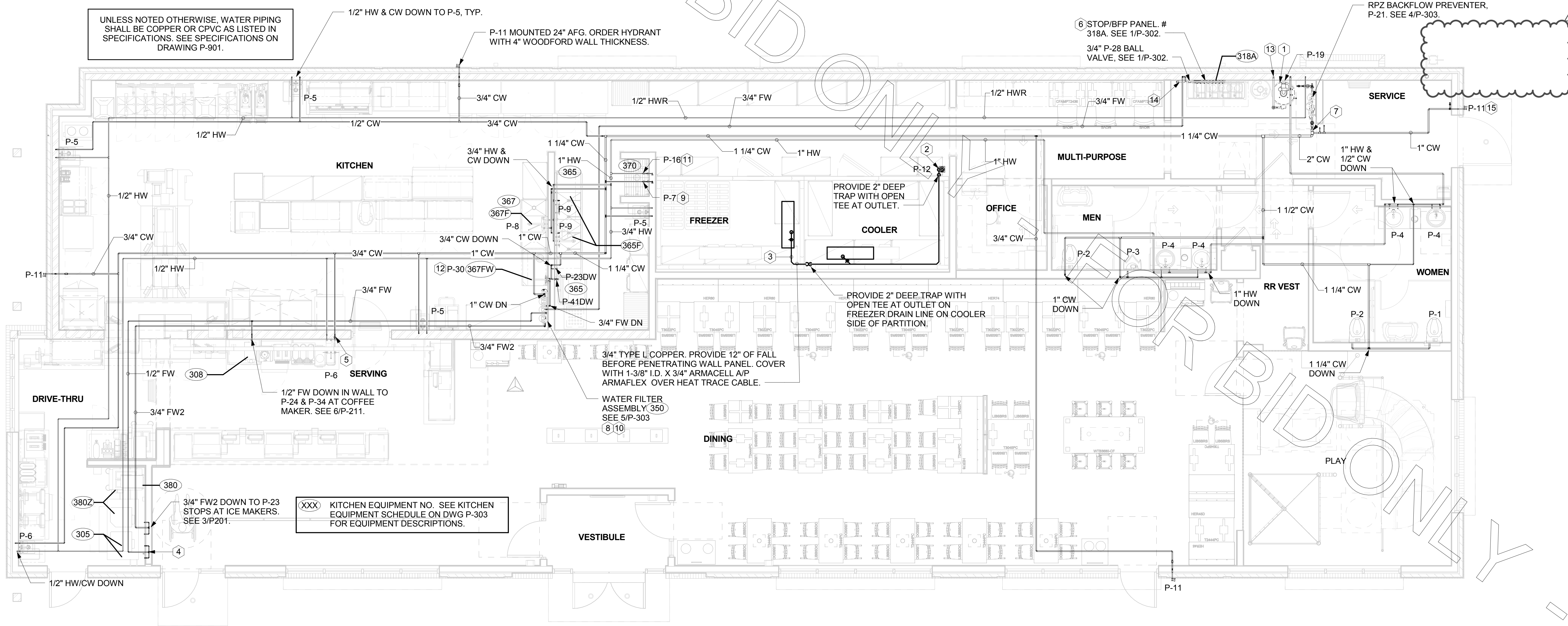
- COORDINATE VENT TERMINAL LOCATIONS WITH FRESH AIR HOODS ON ROOFTOP EQUIPMENT SO AS TO MAINTAIN MINIMUM 15'-0" CLEARANCE.
- HOLD ALL PIPING ABOVE THE CEILING TIGHT TO STRUCTURE. DUCT LOCATIONS TAKE PRIORITY. SEE DRAWING M-201 FOR DUCT LAYOUT. COORDINATE CONFLICTS WITH GC.
- SEE K-SHEET ELEVATIONS FOR KITCHEN EQUIPMENT WATER PIPING ROUGH-IN LOCATIONS.
- SEE SHEET P-211 FOR BEVERAGE CONDUIT PIPING.
- SEE RISER DIAGRAM 1/P-301 FOR VENT PIPING. SEE ROOF PLAN 1/P-250 FOR VENT THRU ROOF (VTR) LOCATION.
- VERIFY WALL TYPE AND WALL THICKNESS AT EXTERIOR HOSE BIBBS PRIOR TO ORDERING EQUIPMENT.
- WATER HEATER PIPING IS SHOWN FOR STATE/A.O. SMITH MODELS WITH SIDE INLET/OUTLET CONNECTIONS. ADJUST PIPING AS NEEDED TO ACCOMMODATE OTHER CONNECTION POINTS WHEN ALTERNATE MODELS ARE PROVIDED.
- COORDINATE ABOVE-CEILING PIPING LOCATIONS AND ROUTING WITH HVAC CONTRACTOR AND M-SHEETS PRIOR TO INSTALLATION. ALL MAIN DUCT TRUNK LOCATIONS SHALL TAKE PRIORITY. PIPING MAY REQUIRE REMOVAL AND REINSTALLATION AT PLUMBING CONTRACTOR'S EXPENSE IF PIPING OBSTRUCTS THE M-SHEET DUCT LAYOUT AS SHOWN OR PREVENTS ACCESS TO GREASE DUCT CLEANOUT OPENINGS.

KEY NOTES

- SEE 6/P-303 FOR P-19 WATER HEATER, AND P-38 HOT WATER CIRCULATING PUMP. COORDINATE WATER AND DWV PIPING IN THIS AREA WITH HVAC DUCT. SEE M-201 FOR DUCT LAYOUT.
- TURN 3/4" CONDENSATE PIPING OUT OF COOLER AND EXTEND OUTLET TO P-12 FUNNEL DRAIN, SECURE PIPING TO COOLER/FREEZER WALL WITH RUBBER INSULATED PIPE CLAMPS TO PREVENT GALVANIC CORROSION. SEAL ALL PENETRATIONS IN WALLS WITH PERMAGUM CORD. TERMINATE ABOVE FUNNEL WITH ELBOW AND AIR GAP. PROVIDE P-TRAP IN CONDENSATE DRAIN OUTSIDE COOLER WITH OPEN-TOPPED TEE AT TRAP OUTLET.
- APPLY RAYCHEM XL-TRACE, MODEL 5XL-1, SELF REGULATING HEATING CABLE. USE END SEAL KIT FROM MFR. PROVIDE P-TRAP IN CONDENSATE DRAIN ON COOLER SIDE OF COOLER-FREEZER PANEL WALL WITH OPEN-TOPPED TEE AT TRAP OUTLET. PROVIDE 6" OF FALL IN FREEZER DRAIN LINE PRIOR TO PENETRATING PANEL WALL. EXTEND HEAT TRACE TO P-TRAP OUTLET IN COOLER.
- 1/2" FW TO P-24 & P-34 AT TWO TEA BREWERS. SEE 6/P-211 AND 1/P-302.
- 1/2" CW DOWN TO TRAP PRIMER, P-33. SEE 1/P-101 AND 1/P-302.
- OWNER PROVIDED, PLUMBER INSTALLED STOP/BFP PANEL. SEE K-SHEET ELEVATIONS FOR EXACT LOCATION. PROVIDE EXPOSED 3/4" BALL VALVE AT CONNECTION TO PANEL. ROUTE 1" PVC DRAIN FROM FACTORY PANEL DRAIN CONNECTION TO P-26 FUNNEL DRAIN AT END OF BEVERAGE RACK AND TERMINATE WITH ELBOW AND AIR GAP.
- 2" CW. SEE 4/P-303 FOR EXACT ROUTING LOCATIONS OF CW PIPING IN THIS AREA.
- OWNER PROVIDED, PLUMBER INSTALLED WATER FILTERS. SEE DETAIL 5/P-303.
- 1/2" HW AND CW DROPS TO MOP SINK FAUCET SET P-7. PROVIDE BALL VALVE FOR EACH ABOVE CEILING WITH P-22 BALL CHECK VALVE IN EACH DROP. SEE RISER DIAGRAM 1/P-302.
- FW AND FW2 FROM WATER FILTERS. SEE DETAIL 5/P-303.
- INSTALL P-16 3-WAY VALVE WITH BACKFLOW PREVENTER ON P-7 FAUCET SPOUT FOR CONNECTION TO ECOLAB DETERGENT DISPENSER. SEE DETAIL 4/P-201.
- 3/4" FW DROP TO TWO-HANDLE FAUCET, P-30. MOUNT FAUCET ON WALL. SEE K-SHEETS FOR EXACT LOCATION. PIPE 1/2" FW TO EACH FAUCET INLET WITH 6" SPREAD. PROVIDE BALL VALVE ABOVE CEILING. SEE RISER DIAGRAM 1/P-302.
- 1" GAS DOWN FROM ROOF FOR P-19. SEE 6/P-303 FOR CONTINUATION. OFFSET DROP WITHIN WALL ABOVE MECH ROOM CEILING.
- 1" DIAMETER PVC DRAIN FROM BACKFLOW PREVENTER PANEL. CONNECT 1" PVC TO FACTORY PROVIDED COUPLING MOUNTED ON BACK PANEL. ROUTE DRAIN TO P-26 FUNNEL DRAIN AT END OF BAG-N-BOX. MOUNT PIPING TIGHT TO WALL WITH STRUT AND CLAMP.
- P-11 WALL HYDRANT 30" AFF WITH BALL VALVE IN DROP 48" AFF. ORDER HYDRANT WITH 12" WOODFORD WALL THICKNESS. SEE WATER RISER 1/P-302.

WALK-IN CONDENSATE PIPING NOTES:

INSTALL PIPING TIGHT TO WALL SO AS NOT TO INTERFERE WITH COOLER AND FREEZER SHELVES. PROVIDE UNION FITTINGS IMMEDIATELY DOWNSTREAM OF CONNECTION TO EVAPORATORS.



NOTE TO WATER HEATER INSTALLER:

POSITION VALVES AND TRIM IN WATER HEATER CLOSET SUCH THAT VISIBLE OBSERVATION OF VALVES AND TRIM IS UNOBSTRUCTED AND SUCH THAT ACCESS FOR OPERATION OR REPAIR IS POSSIBLE WITHOUT USE OF STEP LADDERS OR ANY NEED TO DISASSEMBLE ANY COMPONENTS.



Chick-fil-A

5200 Buffington Road
Atlanta, Georgia 30349-2998

INTERPLAN

ARCHITECTURE
ENGINEERING
INTERIOR DESIGN
PROJECT MANAGEMENT

604 COURTLAND STREET SUITE 100
ORLANDO, FLORIDA 32804
PH 407.645.5008
FX 407.629.9124

SEAL:
THIS DOCUMENT IS NOT FOR CONSTRUCTION
UNLESS THE ARCHITECT OR ENGINEER'S
SIGNATURE AND SEAL APPEAR BELOW

CHICK-FIL-A

Cherokee Place

115 Cherokee Place, Cartersville, GA 30121

FSR# 00534

REVISION SCHEDULE		
NO.	DATE	DESCRIPTION
2	01/12/18	Coordination Revisions

CONSULTANT PROJECT #	2017.0149
PRINTED FOR	BID
DATE	11.20.17
DRAWN BY	JL

Information contained on this drawing and in all digital files produced for above named project may not be reproduced in any manner without express written or verbal consent from Interplan LLC. REPRODUCTION OF THESE DOCUMENTS FOR ANY PURPOSE OTHER THAN THAT FOR WHICH THEY WERE PREPARED, REPRODUCTIONS, CHANGES OR ASSIGNMENTS ARE PROHIBITED.

SHEET
WATER PIPING PLAN

SHEET NUMBER

P-201