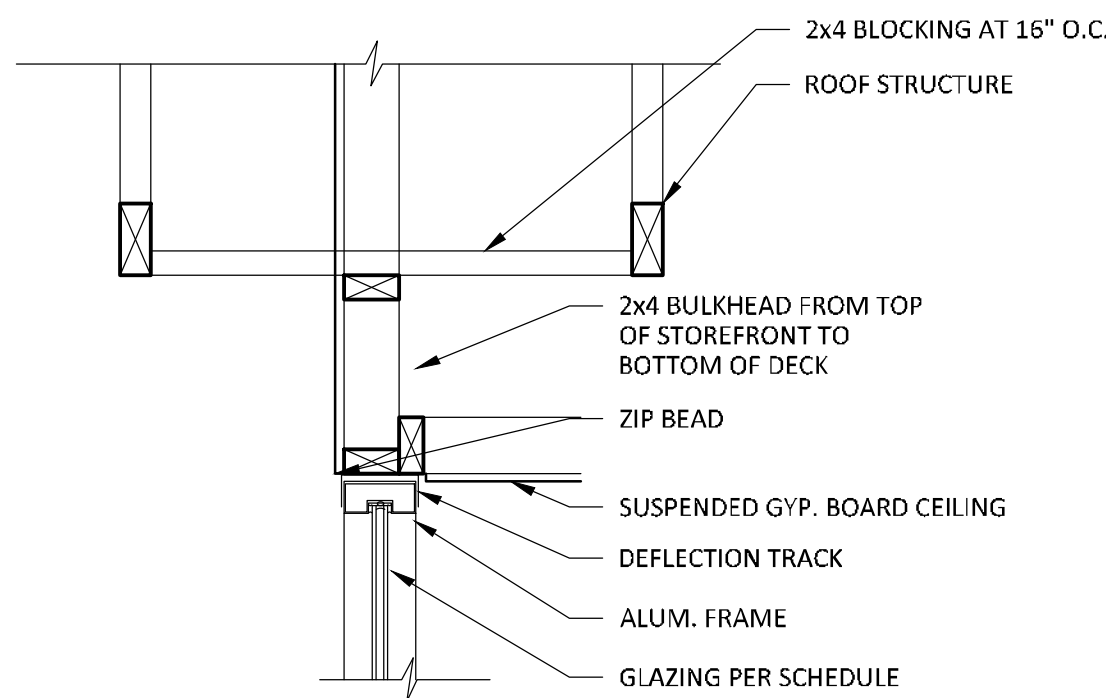
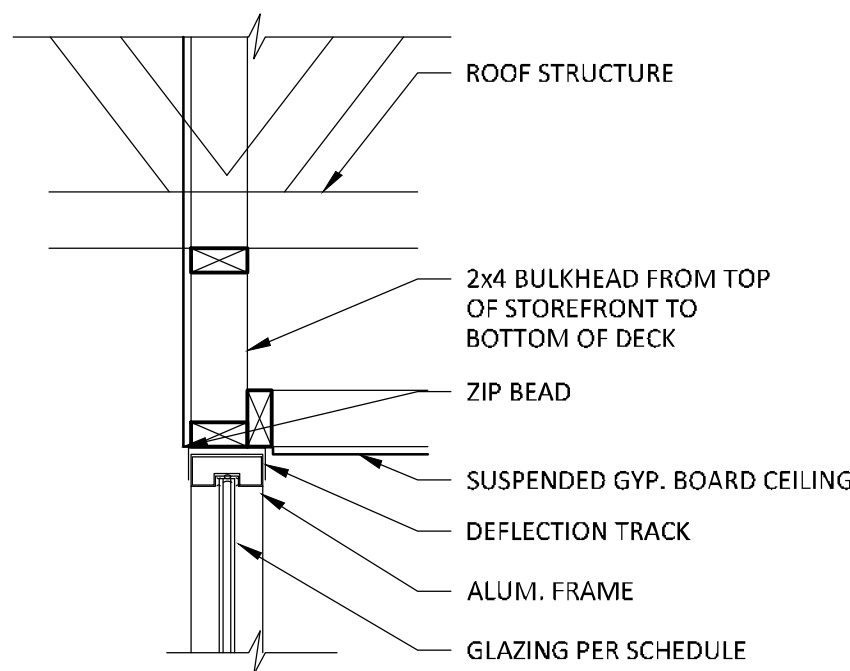
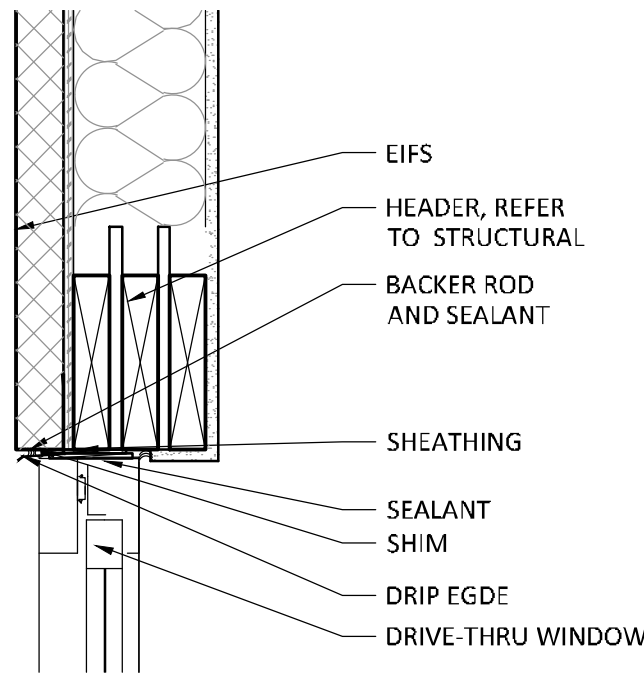


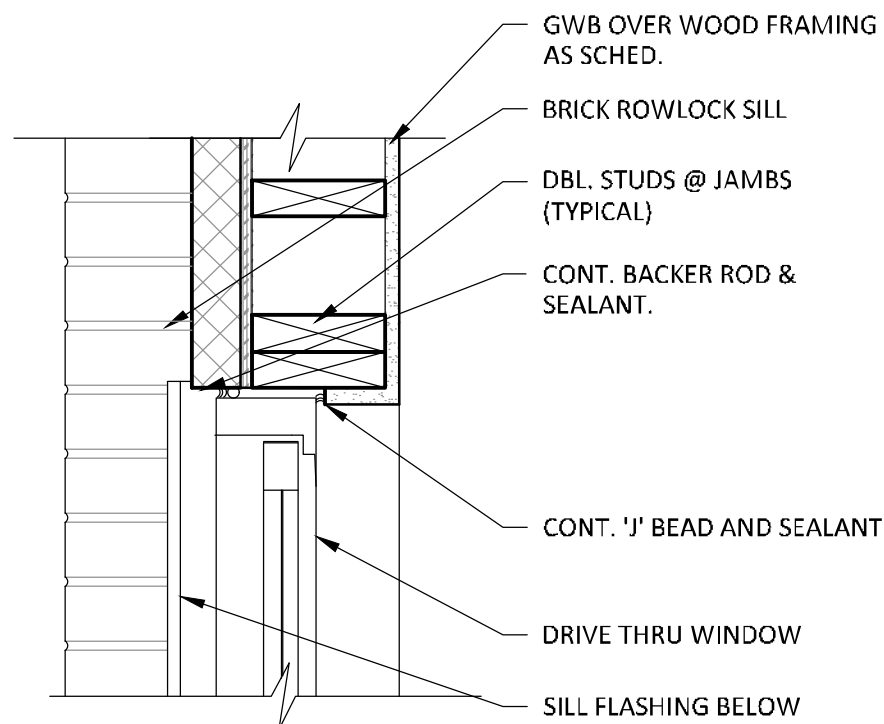
1 STOREFRONT ELEVATIONS

1/4" = 1'-0"



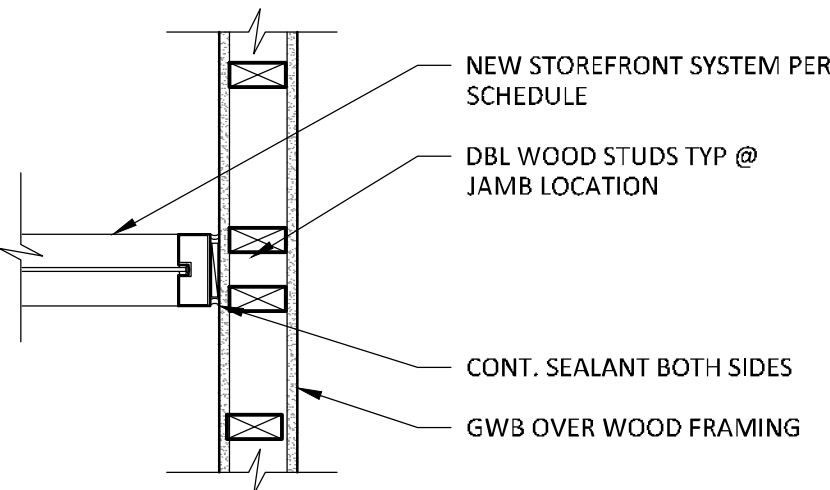
2 HEAD DETAIL

1 1/2" = 1'-0"



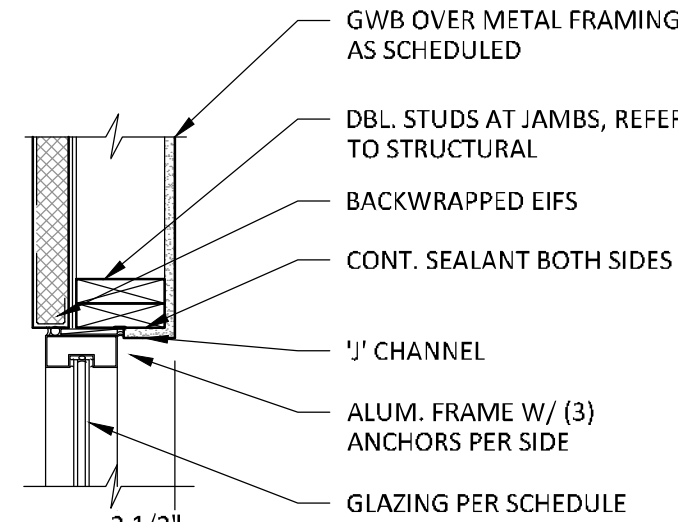
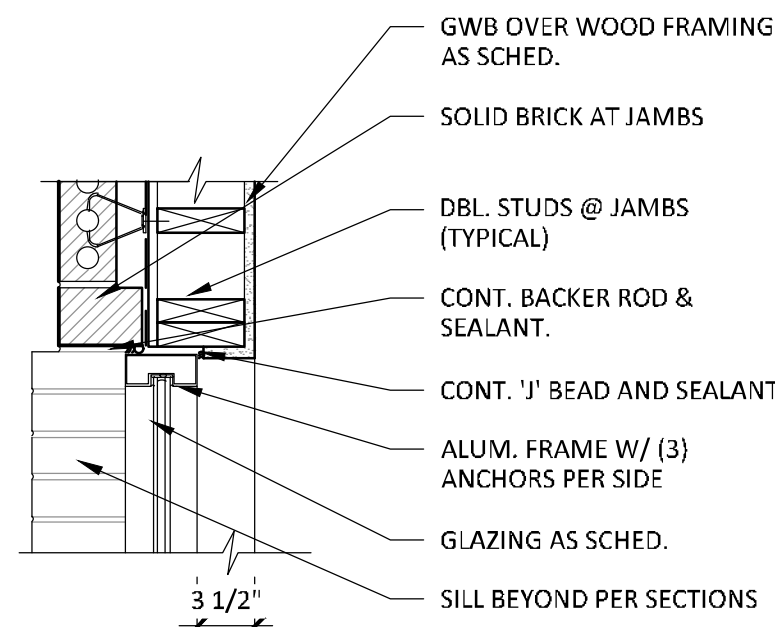
3 HEAD DETAIL

1" = 1'-0"



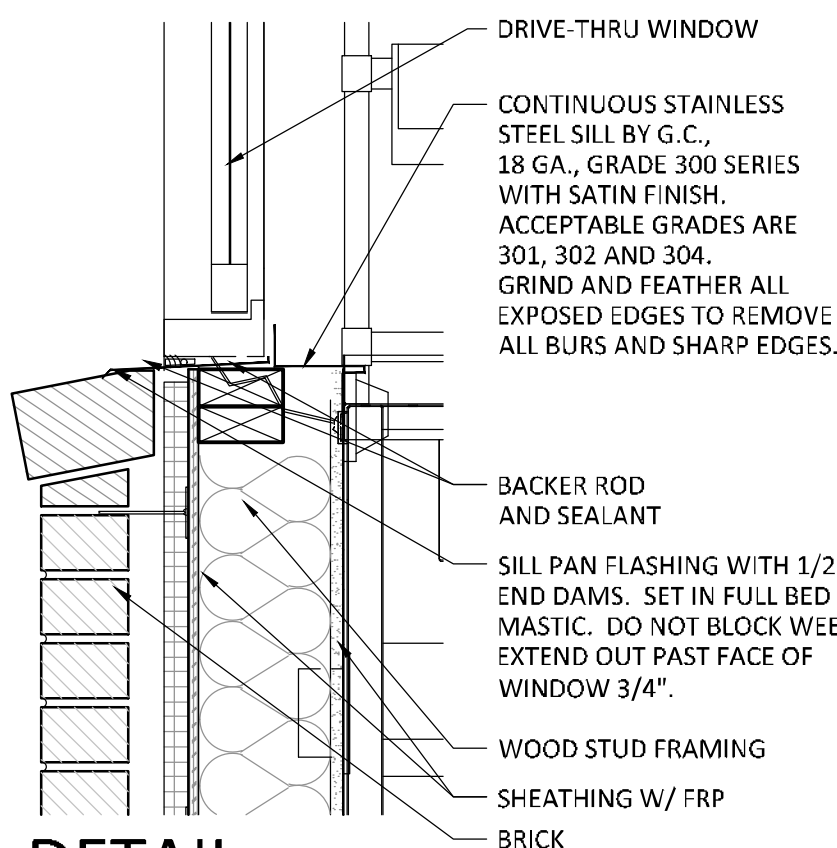
4 HEAD DETAIL

1" = 1'-0"



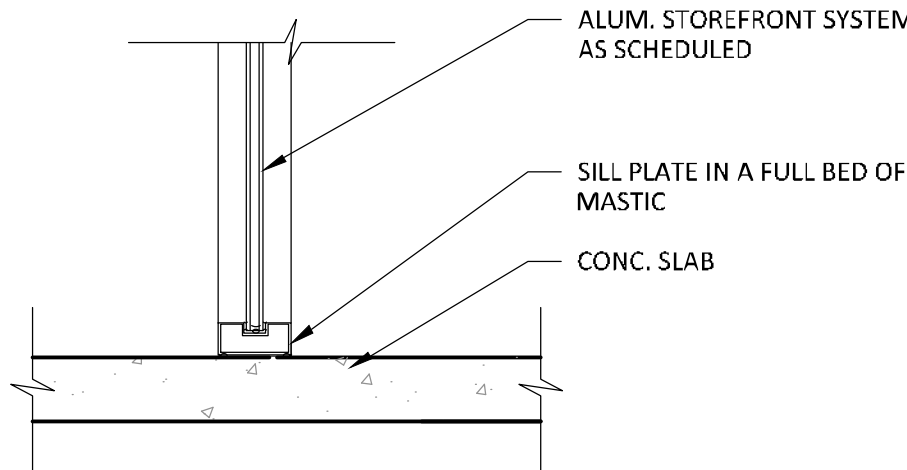
5 JAMB DETAIL

1 1/2" = 1'-0"



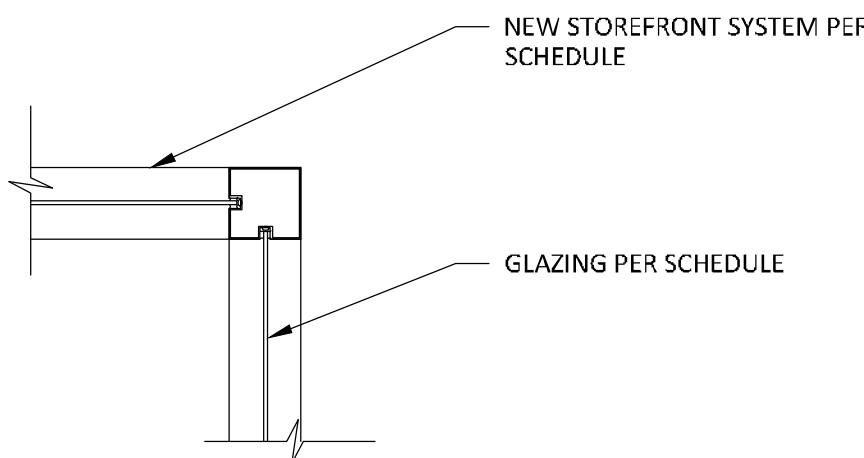
6 JAMB DETAIL

1" = 1'-0"



7 JAMB DETAIL

1" = 1'-0"



8 JAMB DETAIL

1" = 1'-0"

9 SILL DETAIL

1 1/2" = 1'-0"

10 SILL DETAIL

1" = 1'-0"

11 JAMB DETAIL

1" = 1'-0"

WINDOW NOTES

- CONTRACTOR MUST VERIFY ALL DIMENSIONS IN FIELD.
- COORDINATE/VERIFY ACTUAL DIMENSIONS WITH STOREFRONT MANUFACTURER'S SHOP DRAWINGS.
- CAULK AROUND WINDOW FRAMES TO BE DYMETRIC 511 (TREMCO) POLYURETHANE SEALANT
- FOLLOW MANUF. SPECIFICATIONS AND INSTRUCTION
- COLOR TO BE DARK BRONZE.
- "*" INDICATES TEMPERED GLAZING.
- SEE SHEET EQ-1 AND EQ-2 FOR DRIVE THRU WINDOW SPECIFICATION.
- ALL GAPS BETWEEN ROUGH OPENING AND WINDOWS TO BE SEALED WITH EXPANDING FOAM.
- GLAZING SHALL BE CLEAR 1" INSULATED GLASS SYSTEM; 1/4" CLEAR OVER 1/4" CLEAR, LOW-E ON #3 SURFACE, PPG SOLARBAN 90; TEMPERED WHERE INDICATED.
- STOREFRONT SHALL BE SET IN A SILL PAN WITH 1/2" END DAMS. SET SILL PAN IN FULL BED OF MASTIC. DO NOT BLOCK WEEPS. FLASHING BY STOREFRONT VENDOR. FLASHING TO EXTEND 1/2" PAST OUTSIDE FACE OF MULLION.



Christopher W. White
Architect AR #3086
5801 E. 41st St., Suite 712
Tulsa, Oklahoma

White Design Group, P.C.
Restaurant and Interiors Consulting
5801 EAST 41ST STREET, SUITE 712, TULSA, OKLAHOMA 74135



NEW RESTAURANT FOR:
ARBY'S - INSPIRE DUAL REG 40 - STD
241 US HIGHWAY 425
MONTICELLO, AR 71655
FOR
RB AMERICAN GROUP
6200 OAK TREE BLVD, INDEPENDENCE, OH 44131

ISSUE	DATE
PRELIMINARY	01-26-2023
PERMIT	03-12-2023
REVISION	

WINDOW ELEVATIONS
AND DETAILS

SHEET:

A8.2